



THE LONDON
SCHOOL OF
ENGLISH
SINCE 1912

Westcroft Square

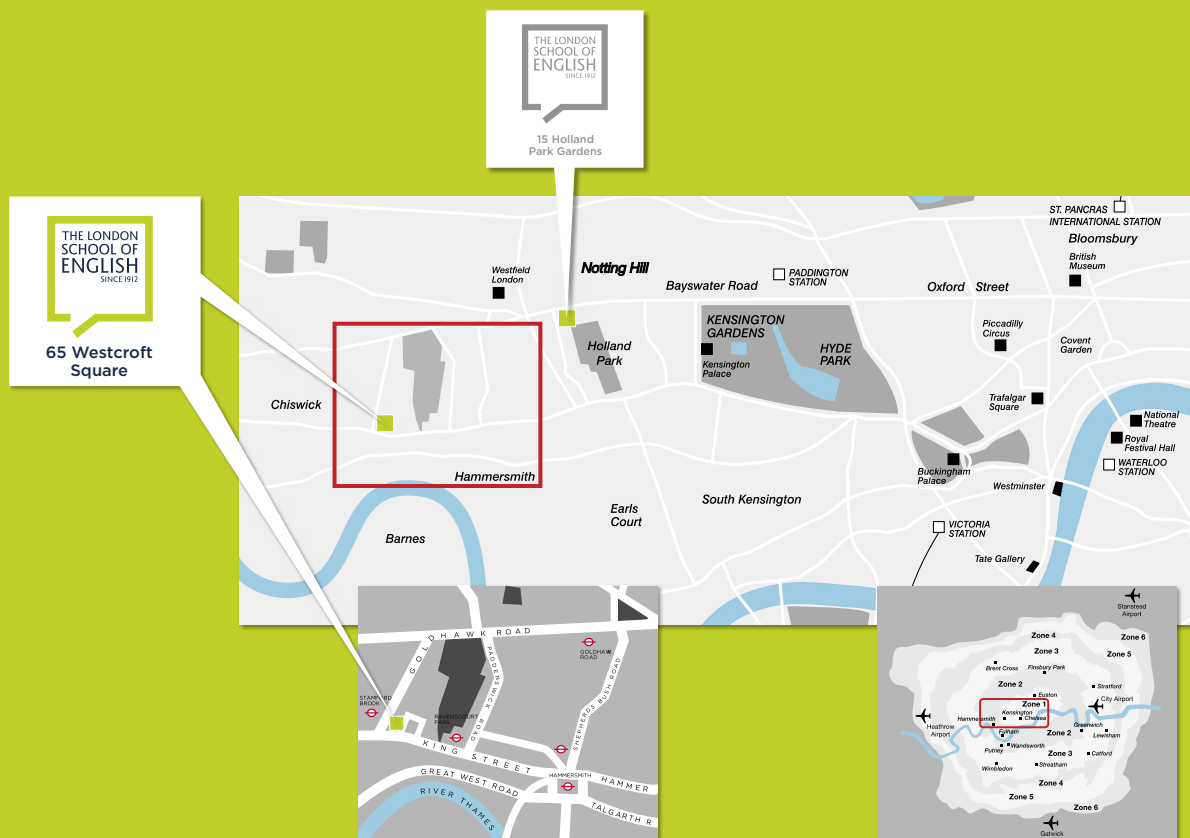
Intensive General English, Academic English and Examination courses 2012

Bringing language to life for 100 years

Our location

Westcroft Square is in Stamford Brook, a pleasant, safe neighbourhood close to Chiswick, a popular, lively shopping and residential area. Many of our host families are in this area and the school is just 3 minutes' walk from Stamford Brook underground station in Zone 2 – around 20 minutes from the centre of London.

www.londonschool.com/location



Welcome



Our clients at Westcroft Square come from a variety of backgrounds. Some need English for their work, some for study and some for leisure.

Whatever their reasons for learning, they are all serious about getting results. At the same time, they want to enjoy themselves – people always learn more if they are enjoying themselves.

Timothy Blake
Chief Executive




What makes us different?



Our clients choose us because:

- We offer unrivalled experience so you can be sure that our trainers will help you to achieve practical results.
- We are very focused on progress. This is monitored throughout your stay so we – and you – can be sure that you are learning all the time.
- Many of our clients are a little older than in most schools, which makes the learning environment a mature, productive and enjoyable place to be.
- We use a variety of different methodologies and materials to suit different learning styles. We develop many of our own resources, so you don't just use one course book throughout your course.
- We have an attractive, modern training centre in an excellent part of London – close to the centre (Zone 2), but in a quiet, residential area of the city.
- We offer high standards in all aspects of your stay – excellent accommodation options, varied free time options, a school cafeteria and high speed internet connectivity in the school. Wifi is also available in your accommodation.

Above all, we understand that you want to use English more effectively and with greater confidence in the shortest possible time, so everything that we do is focused on achieving that objective.



I have been here for a total of six months, and have done a mixture of courses. Coming to this school was the best decision I have ever made. Thank you for everything.

Seda Aygün
Turkey

Intensive group courses



Factcheck IGE

Group	Maximum 12
Age	Minimum 18; Average 28
Hours	22 hrs/wk. (22 x 60 mins)
Length	Minimum 2wks, no maximum
Schedule	Semi-flexible start dates
Plus...	Regular lecture schedule Monthly 1:1 tutorial
Level	1 2 3 4 5 6 7 8 9

See flap at the back of this
brochure for details of level scales

Intensive General English (IGE)

If you are motivated, prepared to work hard, and enjoy a fast-paced, dynamic and enjoyable learning environment, then this course is for you. As the name suggests, the course is intensive – 22 hours per week (and when we talk about an hour, we mean 60 minutes). In those 22 hours...

- You will work with qualified and experienced trainers who use different teaching methods to suit your needs.
- You will achieve practical results; we build up your knowledge and make sure you apply what you have learned daily. As we say on the front of our brochure, we are focused on bringing language to life!
- You will never be bored! We use teaching materials that are developed by us to support our dynamic and varied teaching styles. We use published text books, but they are used alongside a variety of other materials to make the course content varied, interesting and relevant.
- You will have one-to-one tutorials to discuss your progress and review your needs, so that we can be sure that the course remains relevant.
- You will be able to enjoy the company of new friends who will share your needs and motivation but who will come from a wide variety of cultures and language backgrounds.

To find out more about this course, visit www.londonschool.com/ige



Scan this code for
information about
General English courses
on our website

Factcheck EFU

Group	Maximum 12									
Age	Minimum 18; Average 25									
Hours	22 hrs/wk. (22 x 60 mins)									
Length	Min. 4wks, max. 6 months									
Schedule	Fixed start dates									
Plus...	One university visit or visit from a university representative every course									
	Regular lecture schedule									
	Monthly 1:1 tutorial									
Level	<table><tr><td>1</td><td>2</td><td>3</td><td>4</td><td>5</td><td>6</td><td>7</td><td>8</td><td>9</td></tr></table>	1	2	3	4	5	6	7	8	9
1	2	3	4	5	6	7	8	9		

See flap at the back of this brochure for details of level scales



Scan this code for information about preparing for university on our website

English for University (EFU)

If you want to get a university place, you need to be prepared. This course helps to bridge the gap between your general English and the academic English and study skills you will need at university. By taking this course...

- You will feel more confident and prepared for academic life and will therefore be more likely to be successful. We cover the key learning skills that you will need at university.
- You will be a more attractive candidate than someone who simply has the required English level. Competence in research skills, critical analysis and extended writing is not a part of the IELTS examination, so completing this course gives you a competitive advantage.
- You will have the help you need to achieve your goals. You will be supported by our University Relations Manager and by our whole Academic Management team.

To find out more about this course, visit www.londonschool.com/efu

University Relations Manager

Our University Relations Manager can support you from the moment you start your course with us by:

- Helping you choose both course and institution if you haven't already done so
- Giving you a realistic assessment of your plans
- Helping you complete your application
- Liaising with university staff – we have good connections with the admissions staff at a number of universities
- Negotiating on your behalf if you don't quite get the results you need.



Examination courses

Factcheck

Group	Maximum 12
Age	Minimum 18; Average 27
Hours	24 hrs/wk. (24 x 60 mins)
Length	IELTS 6, 7 or 8wks FCE/CAE 8wks
Schedule	Fixed start dates
Levels	IELTS 1 2 3 4 5 6 7 8 9 FCE 1 2 3 4 5 6 7 8 9 CAE 1 2 3 4 5 6 7 8 9

See flap at the back of this
brochure for details of level scales



Scan this code for
information about
examinations
on our website

Preparing for an examination is demanding, and you need the best possible support to get a good result. We give you plenty of practice tests, a mock examination and regular detailed analysis and input. By the time of the examination, you can be confident that you will be well prepared.

IELTS



If you are planning to enter a British university, you will need a good IELTS score. Our intensive preparation courses give you the best chance of getting the score you need in the examination.

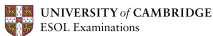
Cambridge FCE and CAE



The Cambridge examinations are still the best known British examinations for international students. Our preparation courses for the First Certificate in English (FCE) and Certificate in Advanced English (CAE) will prepare you for every part of these examinations.

The following examination courses are offered at our Holland Park Gardens centre:

Cambridge BEC Vantage and BEC Higher



Employers are increasingly interested in evidence of a good command of business English, so these examinations will give you a real competitive advantage. The Cambridge Business English Certificates (BEC) are the business-focused equivalents of the FCE (BEC Vantage) and CAE (BEC Higher).

Legal English examinations

Our TOLES and ILEC legal English examination preparation courses are available to participants who have completed our three-week Legal English: Young Lawyers programme.

Visit **www.londonschool.com/exams** for more details.

You really improve your
English all the time.
Hard work in a fun way.

Lais Seixas Amaral
Brazil



Progress. Results. Success.

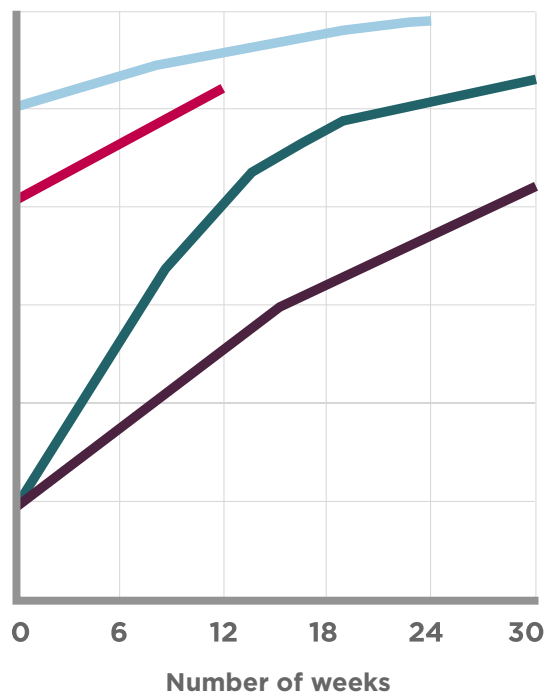


Progress and results are our **shared goals**, so we work closely with you to achieve them.

The amount of progress someone can make varies according to a number of factors, including starting level, stage of learning, budget, natural ability and commitment. The case studies on page 11 are based on the experience of some recent clients.

Levels

- 8 Advanced
- 7 Pre-Advanced
- 6 Upper Intermediate
- 5 Intermediate
- 4 Low Intermediate
- 3 Pre-Intermediate



See flap at the back of this brochure for details of level scales



Hiroko Matsuo
Japan

Studied: 13 weeks' Intensive General English, 6 weeks' IELTS and 13 weeks' English for University

After leaving us: MA in Theatre Design at the Central School of Speech and Drama

“I really enjoyed this course and studied a lot! What is amazing is that I've made huge progress in my English, starting at level 3 and now I'm level 6 and I've only been here 7 months! This would never have happened in Japan and it's all thanks to the London School of English.”



Michael Gyger
Switzerland

Studied: 12-week special combined exam preparation course for Cambridge Advanced English and BEC Higher

After leaving us: Client advisor for private banking clients, UBS AG

“The progress I made on the excellent exam preparation courses at LSE, and the diplomas after the exams, allowed me to stop my English classes in Switzerland giving me more time to focus on my career. I feel much more secure in my daily contact with English speaking clients. All in all it was a worthwhile experience.”

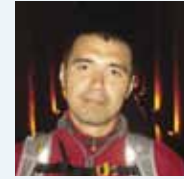


Veronika Franus
Russia

Studied: 5 weeks' Individual Tuition and 26 weeks' Intensive General English Combination Course

After leaving us: BSc in Financial Management at the University of Essex

“The best things about the course were doing regular written homework, which prepared me for my future coursework, and hearing so many different accents. This helped me understand my tutors better at university. I have received all that I came here for, and more. I also made many good friends, with whom I still keep in contact.”



Anuar Torpakov
Kazakhstan

Studied: 22 weeks' English for University, 2 weeks' Intensive General English

After leaving us: MSc in Public Policy, University College London

“I particularly enjoyed the EfU course because although I was fairly confident about my level of general English, I really needed to improve my academic English and academic skills. I was very pleased with my progress, especially in writing where I increased my ability from IELTS 6.0 to 8.0. I also had very little idea about how the UK university system worked, and so the university visits were invaluable as I could really see what was ahead of me.”

I'm very happy with my homestay accommodation. My hosts are very kind, the cooking is very good and they have helped me to discover interesting places in London. The journey to school is really convenient, I can take the bus or walk.

Takafumi Katakura
Hitachi



Accommodation



My experience in my homestay was wonderful. The house is near the school and the family are friendly. It felt comfortable and safe.

Rogério Dias de Araújo
Brazil



Scan this code for information about accommodation on our website

For most people the choice of accommodation in London is extremely important. We offer you the following options:

Homestay

This is a great way to ensure that you are speaking English at every opportunity during your stay. Many of our hosts are professional working people who can give you an insight into British life. Our homestays are in good, safe areas typically within 30 minutes of our centres, and offer wifi connection.

To find out more about the homestay experience, visit **www.londonschool.com/homestay**

Residences

For those who prefer a little more independence, residences are an affordable alternative to homestay accommodation. We offer year-round residences, though the choice is much greater in the summer months when university residences are made available to us.

Flat share

When you have settled into life in London, you may decide to share an apartment (usually called a 'flat' in the UK) with others. We can put you in touch with agencies, direct you to reliable flat share websites and advise you generally.

To see the full range and locations of all our accommodation options, visit **www.londonschool.com/accommodation**

Our services and facilities



I really enjoyed my stay here. The people are very kind and everybody is here for you all the time.

Maša Štirn
Slovenia



We make sure that your needs are met throughout your stay by providing many extra services:

Social programme

We all need to relax after a busy day, so our organised social programme gives you an opportunity to experience London and practise your English in the company of your new friends from the school. We can also help you organise trips outside London.

Student lounge and café

We provide a variety of freshly prepared foods in our modern, internet-enabled café. The café provides an ideal opportunity for you to practise your English in a relaxed and informal environment. There are also many other cafés and restaurants within a few minutes' walk of the school.

Technical facilities

Many people want to stay in touch with home or work when they are here, so we provide high-speed wifi access in the school and in accommodation. As you might expect, all our computers support all major non-European scripts.

Additional learning facilities

In addition to access to the internet and email, our computers offer free access to our online learning modules, so you can continue to study even when your classes have finished for the day.

All the staff at the school want to help you to make the most of your time. So whatever support or advice you need, just ask us – we're here to help.

Improve your English any time – and from anywhere in the world!



The structure of the course is excellent, and most importantly I can study at any time. The weekly contact is very important and helps me maintain my schedule.

Gilberto Freitas
Scania Latin America

Our e-learning courses offer you the chance to improve your English before you come to us, after you leave us or even if you are not able to come to London at all.

Our system is much more than just another online learning package that you pay for and never touch again. Although the package is based online, we also have a mentor – a real person based at The London School of English – who can answer your questions and keep you motivated.

A London School of English online course offers:

- Several course options, ranging from short two month courses with just a few units to six month courses with hundreds of hours of access, including a personalised learning path.
- Programmes with either a general, business or legal focus.
- A personal mentor to keep you motivated and answer your questions.
- A London School of English certificate on completion.

Try before you buy!

To find out more and try the system out for yourself, visit
www.londonschoolonline.com



Scan this code for
information on online
courses on our website

Level Scale

Level	LSE Class	Description	CEFR*
9	Very Advanced	I can speak fluently and understand completely.	C2
8	Advanced	I speak and understand very well but sometimes have problems with unfamiliar situations and vocabulary.	C2
7	Pre-Advanced	I speak and understand well but still make mistakes and fail to make myself understood occasionally.	C1
6	Upper Intermediate	I can communicate without much difficulty but still make quite a lot of mistakes and misunderstand sometimes.	B2
5	Intermediate	I can speak and understand reasonably well and can use basic tenses but have problems with more complex grammar and vocabulary.	B1-2
4	Low Intermediate	I can make simple sentences and can understand the main points of a conversation but need much more vocabulary.	B1
3	Pre-Intermediate	I can communicate simply and understand in familiar situations, but only with some difficulty.	A2
2	Elementary	I can say and understand a few things in English.	A1
1	Beginner	I do not speak any English.	

The school's level scale matches IELTS. When a student has finished working at a level s/he should achieve this score on an IELTS test.

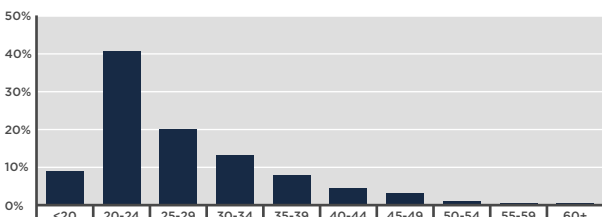
*Common European Framework of Reference for Languages of the Council of Europe

About our clients

Our course participants come from a range of nationalities, backgrounds and age groups. While you are at the school, you will study alongside a wide variety of people, which keeps each course stimulating and different.

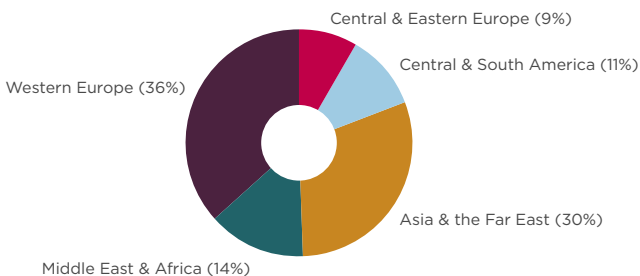
Age profile

Age profile of participants on all scheduled courses.



Average age: **27**

Where our clients come from



Number of nationalities in 2010/11: **60**

www.londonschool.com/clients

Next steps...



We are here to help you, not to pressure you, so feel free to contact one of our advisers to discuss your needs further. You can contact us as follows:

By telephone

+44 20 7605 4142 (Sales enquiries)

+44 20 7605 4123 (All other enquiries)

(Lines are open Monday – Friday, 08.30 – 17.30)

By email

sales@londonschool.com

Our website

www.londonschool.com

To book a course

www.londonschool.com/booking

Administration address

15 Holland Park Gardens, London W14 8DZ

Visiting address

65 Westcroft Square, London W6 0TA

Accredited by the



ENGLISHUK



UK Border Agency
Highly Trusted Sponsor



Scan this code to
visit our website