

EmbassyCES

ENGLISH LANGUAGE TRAINING WORLDWIDE

2012
celebrating
40 years

Travel
to one of 23
amazing locations

learn
English
embassyces.com

**make
friends**
for life

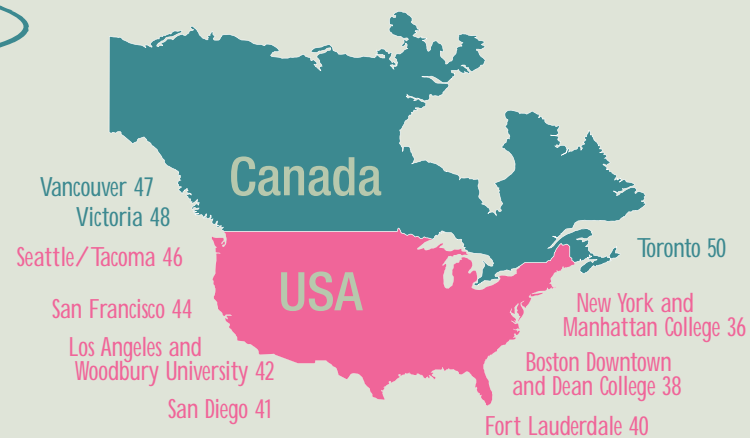
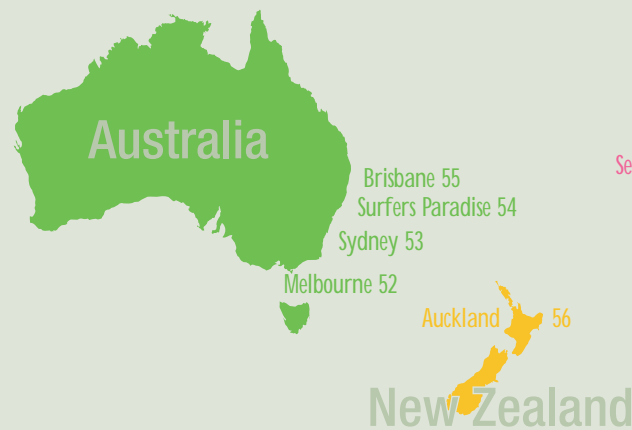
experience
the world

learn with
TECHNOLOGY



“ we love
Embassy ”

23 Destinations



One Embassy Life

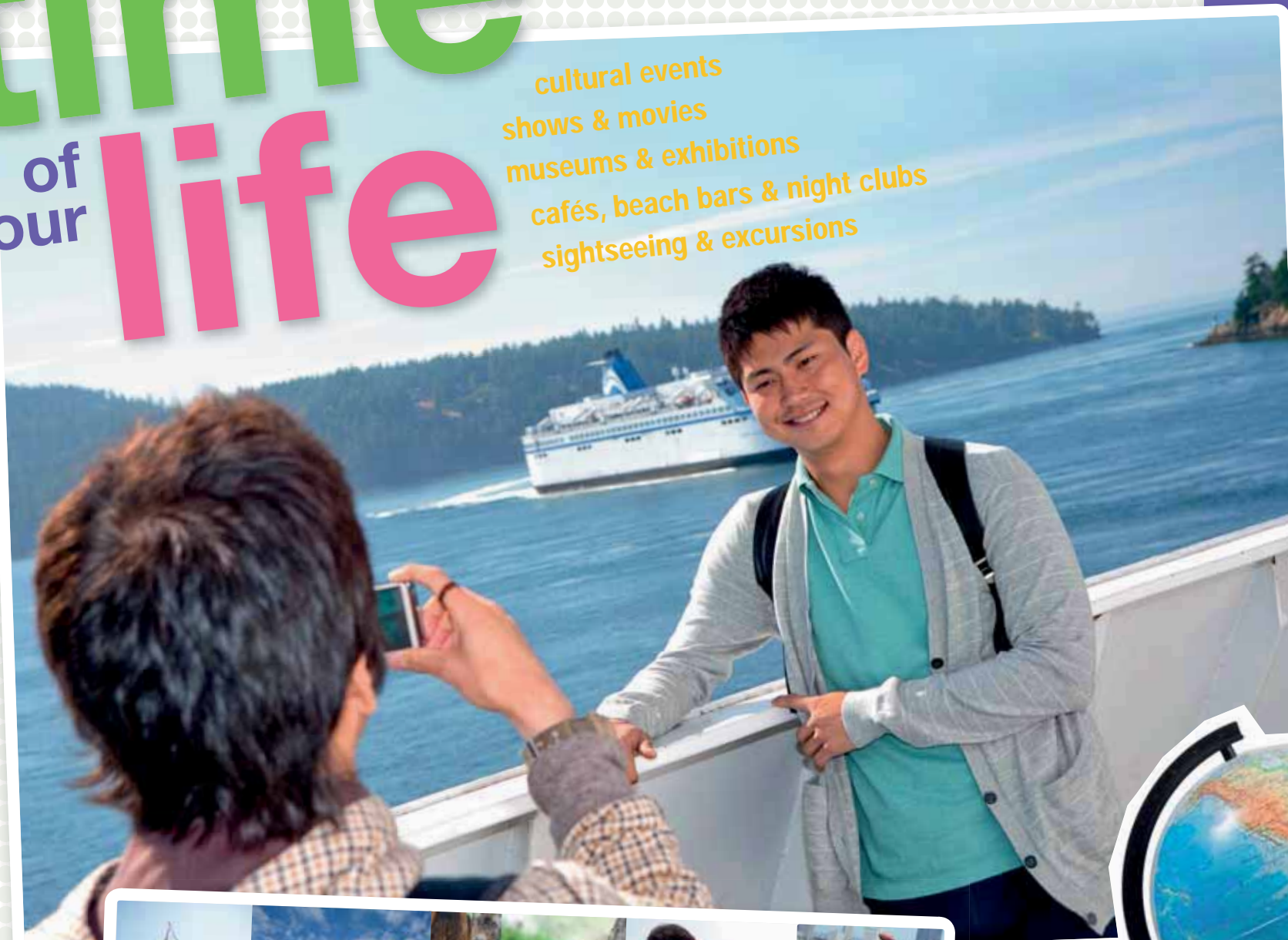
- | | |
|-----------------------|-----------------------------|
| 4 Time of your life | 10 Teaching with technology |
| 6 Home away from home | 12 Student success |
| 8 My Embassy life | 14 Your progress |

17 Exceptional Courses

- | | |
|------------------------------------|------------------------------------|
| General English | Long Term English |
| 16 Certificate of English | 20 Language Year Abroad |
| 17 English for Beginners | |
| 18 Travel and Culture | Exam Preparation |
| 18 Power Speaking | 24 Cambridge ESOL |
| 19 Certificate 8 | 25 IELTS, TOEFL and TOEIC |
| Business English | Embassy Pathways |
| 22 Certificate of Business English | 27 English for Academic Purposes |
| 22 International Internship | 27 Diploma for University Entrance |
| 23 Business English in Action | |
| 23 Work Placement | |

the time of your life

cultural events
shows & movies
museums & exhibitions
cafés, beach bars & night clubs
sightseeing & excursions



Andrés studies in San Francisco,
to see a day in his life with Embassy
go to page 8

When you arrive at your chosen destination you will meet students from all over the world who are looking for the same thing: the very best English language training, and the unforgettable experiences that each of our unique locations offer.

Beyond the classroom

Learning English with Embassy is about more than just being in a classroom. You'll visit museums and theatres, surf and play sports, and enjoy BBQs, cafés, bars and nightclubs. Depending on the programmes you choose, you could be plunging into tropical waters one day and visiting the latest modern art exhibition the next, all after modern, relevant classes that help you communicate through English.

Where do you want to be?

Across the USA, Canada, the UK, Australia and New Zealand we choose our locations so that you can learn in some of the most beautiful and exciting places in the world. Whether you want to be in famous, 24-hour cities that have it all; tranquil, pristine towns that are set against a backdrop of stunning mountain scenery and adventure sports; or chic beach-side resorts that offer some of the best surf in the world: you'll find it all with Embassy.

Lasting friendships

The friends you make with Embassy will be friends for life. Before, during and after your time with us you can meet other students – past, present and future – on our Embassy Facebook pages for the UK, USA, Canada, Australia and New Zealand.

embassyces.com



the time of your life

home away from home

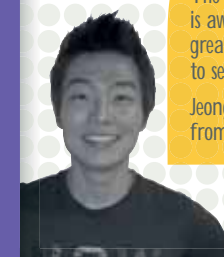
my Embassy life

teaching

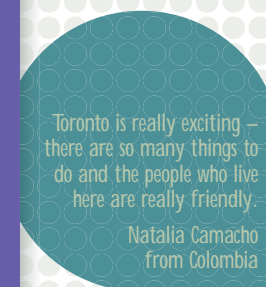
success

courses

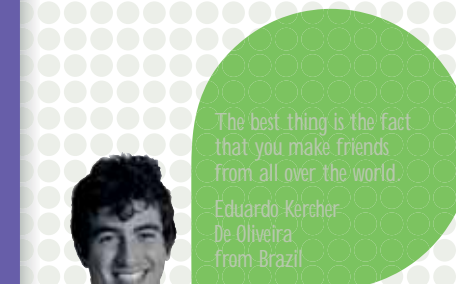
location



The social programme is awesome, it's a great opportunity to see other places.
Jeongbum Song
from Korea



Toronto is really exciting – there are so many things to do and the people who live here are really friendly.
Natalia Camacho
from Colombia



The best thing is the fact that you make friends from all over the world.
Eduardo Kercher De Oliveira
from Brazil

home away from home



★ homestay

★ homestay bed & breakfast

★ Embassy residence

To really enjoy your time with us, you need to feel completely happy with your accommodation. At Embassy, we offer a range of different living options with excellent facilities. Being comfortable, safe and relaxed will really help you to absorb the culture around you, and to succeed in your studies. So even when you are studying abroad, you'll feel right at home.

Homestay

- friendly and welcoming
- network of carefully selected hosts visited by our specialist staff
- a great way to get to know local culture, people and customs
- breakfast and dinner every day
- single or shared room options
- bed and breakfast option with the flexibility to plan your own mealtimes (minimum age 18)

Embassy residences

- bright, modern residences
- fantastic city centre locations
- easy travelling distance from Study Centres
- a selection of shared and single rooms
- self-catering facilities or cafeteria and meal plan options
- en suite and private bathrooms available



Our wide range of residence options includes singles rooms with en suite bathrooms and WiFi access

embassyces.com

An Embassy week

With dynamic classes, an online learning system and expert teachers, you can be sure that by the time Friday comes around you'll have gained considerably more skills and knowledge than you had on Monday morning.

You'll really enjoy practising what you've learned with friends at the weekend.

My first class is at 8.30am and I stay with a family just a short journey away. The school is very central so it's easy to get here.

8am



class



I really enjoy learning at Embassy, the teaching is great and the technology used helps me understand.

break time



At break I like to sit and chat with friends. We practise our English together and also talk about what we want to do in the city that day. My sister is studying here too and we like to hang out.

It's great to be able to connect to home so easily. We have WiFi in classrooms as well as throughout the centre. My friends and I can keep in touch at a time that suits us.



lunch



after school

At lunch we can take a picnic to the park and sit in the sun. San Francisco is a beautiful city and there are many great places to go to.

I first came to Embassy in 2010. When I went home, I told my sister what a great time I had and that I couldn't wait to go back. She thought it sounded so good, that she decided to come too! And now here we are, studying and learning together in San Francisco, making friends and having a great time. I never thought of sharing such an experience with my sister, but it's been wonderful and we have lots of amazing memories to share.



We play lots of sports and hang out outdoors, San Francisco has great weather and the climate is perfect for American Football! Sometimes I go sightseeing or shopping with my friends too. There's so much to do here, I'm never bored!

my Embassy life

Andrés Lopez-Laserna Moreno
from Spain, studied in San Francisco



teaching with technology

the teacher

Your teacher will be qualified and experienced not only in teaching to the highest standards but also in helping you learn English using digital classroom technology. We invest in continuous training so that we provide the best quality teaching around and the latest proven technology that makes classes fun and relevant.



laptops

WiFi-enabled classrooms mean that students can bring their laptops and use them in class to easily access the innovative learning applications and digital course materials.

course materials

The Embassy structured curriculum puts you on a learning path and provides you with all the materials you need to succeed. Depending on what you request, we supply you with a book or an interactive e-book to download. You can use your book to study after class alongside all the resources available on Study Smart.

the interactive whiteboard

The interactive whiteboards installed in every classroom create a modern, open space for you to learn in. We use dynamic, engaging course content such as video, audio, animation and other online materials to bring classes to life. These complement and enhance the serious business of mastering grammar, vocabulary and all the other tough stuff that you'll need to understand.

your friends

One of the most important aspects of your Embassy experience is making friends, both inside and outside the classroom. With your classmates you'll share Embassy life, practice your new language skills and spend time discovering the city you're in.

outside the class

Study Smart is Embassy's online learning platform that integrates class-work with coursework, assignments and progress tests. You can create an e-portfolio of work saving examples of text, audio and video as well as resumes, oral presentations and written reports that you produce during your time with Embassy. You will also be able to monitor your work with a grade book to track how well you are doing as you learn more.



Success!

student of the year



Studying with people of many different nationalities is fun and my confidence has grown a lot. Everything I need to improve my English is here at Embassy. My teachers are the best and we have excellent materials. I'm really glad I chose this school! The study program has good choices for me. I'm now really enjoying the full time IELTS course. This course at Embassy is giving me the English skills I need for finding a good job when I go home to Thailand.

Muanfhun Thongkhum from Thailand

I have really enjoyed my time studying in Toronto. It's been such a great experience – I've met so many fantastic people and learned such a lot. The Power Speaking course I studied really helped me improve my English since it has really given me the opportunity to practice speaking in many different situations. The school is really good at ensuring we only speak English in the school. In the future I am hoping to use my English to work as a Sushi chef – being a chef and speaking English I should be able to work anywhere in the world! So thanks to everyone – I shall never forget my Canadian experience!!

Yuji Mizuno from Japan

The teachers were so kind that they made us feel relaxed in class. They listened to us, and responded clearly. The best thing about the whiteboards is that the internet can be used on the board. It really helps us to study, to watch movies and listen to conversations or music on the internet. I studied English for Academic Purposes and learned how to write essays, read books and criticise. I'm studying electrical engineering at uni, so it definitely helps me to write academic essays in English and read reports. Not only that, it encourages me to broaden my world.

Takao Kawarada from Japan



New Zealand



Canada



Australia

The acquaintance with people from all around the world has revealed to me a lot of information about other cultures and traditions. It has made a profound impression on me and changed my view of life considerably. Moreover, I was so lucky that I have met absolutely great teachers. Such a pleasant environment has made the learning process easy and enjoyable. I have improved my language skills to almost advanced level and can continue my education in the UK studying a Masters programme.

Tina Galdava from Russia.

Every year, each country recognises one outstanding student who has contributed in a special way during their course and made exceptional progress. In 2011, the Student of the Year Award was presented to these talented students in the United Kingdom, Australia, New Zealand and the United States. The award acknowledges students' hard work both inside and outside class time, successful interaction with teachers and classmates, and active participation with the local community.

Gain results in weeks
Studying at Embassy gets results. Qualified and experienced teachers, combined with the latest technology, allow students to move up a level in as little as six weeks. Our excellent academic results mean student satisfaction ratings regularly exceed 95%.

Achieve recognised qualifications
Qualifications earned at Embassy are internationally recognised. Whether it's IELTS, TOEFL, TOEIC, Cambridge Exams, or Embassy's own Certificate of English, you'll achieve an official certificate as proof of your success.

My experience in the United States and Embassy has helped me see that despite our differences in culture, education and religion we are all human in the end. The teachers at Embassy are friendly and supportive of the student's curiosity and eagerness to learn. They always do their best so that students understand what's being taught. The technology in the school, like the interactive whiteboards, is very good and useful. Learning English at Embassy is really helping me to reach my goal of getting a graduate marketing degree at an American University.

Ahmed Abdullah M. Mouawad from Saudi Arabia



UK



USA

your progress



Embassy really helped me to improve my English. The teachers are very attentive and ready to answer questions and the interactive whiteboards are very helpful in the learning process. Learning English is easier!

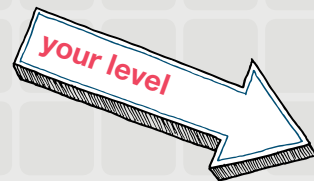
Vinicius Gonçalves Vasconcelos
from Brazil



weeks 10 20 30 40 50 60

intensive

standard



7

IELTS 7-8
TOEFL 95-110
TOEIC 901+
CAMBRIDGE CPE

Proficient

You can use English with ease and fluency. Improve by increasing your understanding of the nuances of the language and engaging in independent reading to develop your vocabulary further.

6

IELTS 6-7
TOEFL 61-94
TOEIC 751-900
CAMBRIDGE CAE

Advanced

You can use English in a range of culturally appropriate ways. Improve by extending your vocabulary and refining your use of style and register.

5

IELTS 5-6
TOEFL 36-60
TOEIC 526-750
CAMBRIDGE FCE

Upper-intermediate

You can use English effectively. Improve by learning to discuss, argue and express opinion in a culturally acceptable way. Refine your use of grammar and vocabulary.

4

IELTS 4-5
TOEFL 30-35
TOEIC 401-525
CAMBRIDGE PET

Intermediate

You can speak English with some confidence. Improve by developing your fluency, your understanding of grammar and by widening your vocabulary.

3

IELTS 3-4
TOEIC 301-400

Pre-intermediate

You can communicate in a range of everyday social and travel contexts. Improve by developing your speaking, grammar and vocabulary.

2

IELTS 2-3
TOEIC 151-300
CAMBRIDGE KET

Elementary

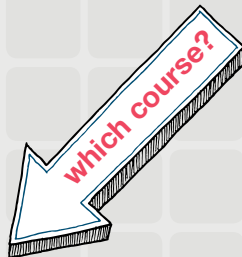
You can understand language used in everyday situations if the speaker speaks slowly and clearly. Improve by developing your listening and vocabulary.

1

IELTS 1-2
TOEIC 0-150

Beginner

You can speak and understand English in a very limited way.



Language Year Abroad – 1 term
Internships – Canada
Embassy Pathways – see page 26

CAE/IELTS Exam Preparation
Business English in Action
Language Year Abroad – 1 or 2 terms
Embassy Pathways – see page 26

Certificate of Business English
FCE/TOEFL/IELTS/TOEIC Exam Preparation
Language Year Abroad – 1 to 3 terms
Power Speaking Programme
Embassy Pathways – see page 26

Certificate 8
Language Year Abroad – 1 to 4 terms

Certificate of English (all levels 2 to 7)
Travel and Culture Programme

Certificate of English for Beginners

The Embassy Promise

If you don't progress to the next level as indicated on our progress chart, you can stay for free additional lessons until you do.*

* Applies to students who maintain full attendance and complete all homework and class assignments.

use these icons to help
choose your course:



location availability



entry level



maximum class size



This is an excellent course - I learnt a lot of grammar and vocabulary and also improved my speaking, writing, listening and reading. I loved the teaching style, especially presenting the lessons on an interactive whiteboard - it really enhanced my understanding and knowledge of English.

Muanfhun Thongkhun
from Thailand

Certificate of English



USA Boston, Boston Dean College, Fort Lauderdale, Los Angeles, New York, San Diego, Seattle/Tacoma (summer only), San Francisco
UK Brighton, Cambridge, Hastings, London, Oxford **CAN** Toronto, Vancouver, Victoria
AUS Brisbane, Melbourne, Surfers Paradise, Sydney **NZ** Auckland



Our most popular course suits every level of learner. Improve your speaking, listening, reading and writing skills in every class. Choose the Intensive 28 for maximum teacher contact time.

About the course

Intensive 28 and 24: in-depth study means you can make more progress, develop your language skills and add variety to your course. Intensive 24 is available only in Australia, New Zealand, Oxford, Fort Lauderdale and San Francisco study centres.

Standard 20: this programme offers a structured English course and enables you to improve in all areas while you explore your study location, join excursions and practise your English. This course is not available to student visa holders in Australia.

Key facts

- development in all areas of your English: speaking, listening, reading and writing
- entrance test
- course materials and online supplementary coursework included
- weekly progress tests
- progress reports every six weeks
- exit tests
- this is not a VET certifying award in Australia

Your lessons

Intensive 28

- Morning and afternoon:
- 20 x 50-minute lessons
 - 8 x 50-minute elective lessons

Intensive 24

- Morning and afternoon:
- 20 x 50-minute lessons
 - 4 x 50-minute elective lessons

Standard 20

- Morning and/or afternoon according to school timetable:
- 20 x 50-minute lessons

Two to four lessons per week of your Certificate course will be undertaken in different formats, including guided lessons with Study Smart, lectures and project work, which have all been designed to improve your learning.

Learning technologies

- interactive whiteboards in all classrooms using exclusive digital materials
- WiFi-enabled classrooms for easy access to real world English and the internet
- Study Smart, our online resource for 24/7 access to course materials, homework, course assignments and progress tests

Certificate of English for Beginners



USA Boston, New York, San Diego
UK Oxford, Hastings
AUS Melbourne
CAN Toronto



This total immersion course is designed for students with little or no English.

About the course

Intensive 28: learn the basics and build on them with this course designed for students who are just beginning to learn English and need to make fast progress.

Your lessons

Intensive 28

- Morning and afternoon:
- 28 x 50-minute lessons per week

Key facts

- total immersion: only English is used in class, no translations or use of any other language
- fast progress in speaking, listening, reading and writing means you'll be able to communicate in just a few weeks
- easy-to-follow structured course
- easy to understand
- study with teachers who specialise in teaching beginners
- regular progress reports and tutorials
- course materials included
- this is not a VET certifying award in Australia

maximise
your
progress!

concentrate
on a specific
objective

develop
a special
interest

add variety
to your
studies

change
elective
every 4-5
weeks

Choose Intensive 28 or 24 and add elective lessons

Elementary and Pre-intermediate (levels 2-3)

- Choose language building electives which enable you to:
- speak more confidently
 - understand spoken English quickly
 - improve the basics of grammar

Intermediate and Upper-intermediate (levels 4-5)

- Choose specialised electives:
- business communication skills
 - vocabulary and idioms of your chosen location
 - exam preparation skills
 - higher-level grammar, writing and conversation

Upper-intermediate and above (levels 5+)

- Focus on electives of particular interest:
- current affairs
 - advanced business communication skills
 - strategies for mastering exams

Travel & Culture Programme



USA Boston, Boston Dean College, Fort Lauderdale, Los Angeles, New York, San Diego, San Francisco, Seattle/Tacoma (summer only)



Spend your vacation improving your English and travelling the USA.

About the course

The Embassy Travel & Culture Programme is an affordable part-time study option that offers great value. It's an excellent choice for anyone wanting to combine a vacation in the USA with some part-time study.

- 16 lessons per week, Monday – Thursday
- classes on Friday are optional
- course materials are included
- enrol in the Travel & Culture Programme and come to the USA on a tourist visa or under the visa waiver programme.

Your lessons

Morning and/or afternoon according to the school timetable:
- 16 x 50-minute lessons per week

Long weekend!

Friday classes are optional so that you have the opportunity to take off for a three-day weekend and sample another slice of American life – maybe take a long weekend in New York, a trip to the Grand Canyon or simply head to the beach for some relaxing weekend sun!

Power Speaking Programme



CAN Victoria, Toronto



Develop fluency, power and effective communication skills through presentations and discussions with this dynamic course.

About the course

Training is in all language areas, but with a focus on confident verbal communication. Units will include gathering and presenting information, persuasion and the language of sales, debating and assertiveness training.

Your lessons

Morning and afternoon
- 28 x 50-minute lessons per week

Key facts

- course books and materials included
- use of cutting edge learning tools, including interactive whiteboards and WiFi-enabled classrooms.

On the Power Speaking course you have to give a presentation every week which is sometimes a challenge but it has helped me become accustomed to talking in front of people as well as speaking and improving my English.

Yuka Koyama
from Japan



Certificate 8



USA Boston, Fort Lauderdale, New York
CAN Toronto, Victoria



A seminar-style English course for people who need to make maximum progress in a limited time, and prefer more individually focused learning.

About the course

Intensive 28 and Standard 20: maximum of just eight people in your core classes. Smaller groups enable faster progress and seminar-style lessons are ideal for the busy professional.

Key facts

- development in all areas of your English: speaking, listening, reading and writing
- coaching in clear, confident pronunciation
- small, seminar-style lessons
- development of extended vocabulary
- mastery of grammatical structures and usage
- regular weekly assessments to keep your progress on track
- course materials included

Your lessons

Intensive 28

Morning and afternoon:
- 20 x 50-minute lessons per week
- 8 x 50-minute elective lessons per week

Standard 20

Morning or afternoon according to the school timetable:
- 20 x 50-minute lessons per week

Elective choices

Business English option

Designed for busy professionals who need to sharpen their business communication skills.

General English option

Focusing on the areas you want to target: pronunciation, vocabulary development or conversation.

Language Year Abroad



USA Boston, Boston Dean College, Fort Lauderdale, Los Angeles, Woodbury University, New York, Manhattan College, San Diego, San Francisco, Seattle/Tacoma
UK Brighton, Cambridge, Hastings, London, Oxford
AUS Brisbane, Melbourne, Sydney
CAN Toronto, Vancouver, Victoria



The perfect solution for students looking to gain fluency during a gap year of study abroad. This course is the most cost-effective way to build your language skills.

About the course

Intensive 28 and Standard 20: this long-term English course with fixed start and end dates is designed for students wishing to develop their language skills for future career or academic advancement.

It has a structured curriculum with regular assessment and progress tutorials to ensure you achieve effective results.

It suits all levels of learners from pre-intermediate to advanced and is designed to improve your speaking, listening, reading and writing skills.

Choose Intensive 28 to accelerate your progress and add variety to your course with specifically designed electives.

The Standard 20 course is not available in Australia.

Assessment

- entry test on arrival, exit test on completion
- continuous monitoring of progress including personal study planning tutorials and mid-term individual progress interviews
- end of term progress report
- end of course assessment and report
- detailed personal Record of Achievement to take away with you

Key facts

- college-style course structure
- flexible timetable with distinct, progressive terms of carefully designed coursework and fixed study breaks
- lessons include tutorials, study visits, lectures, practice tests and presentations
- elective courses each term
- fixed enrolment dates, with exclusive class groups that remain the same each term
- individual learning plans for your own study needs
- standardised curriculum at every Embassy Study Centre
- course materials not included

Certificate of achievement

At the end of your course you will receive a certificate of achievement detailing your entry and exit level.

Learning technologies

- interactive whiteboards in classrooms
- exclusive digital materials accessed via your laptop
- WiFi-enabled classrooms for easy access to real world English and the internet
- Study Smart, our online resource for 24/7 access to course materials, homework, course assignments and progress tests

Sample curriculum

	Summary	Core Content (lessons per week)	Sample Electives
Pre-intermediate (level 3)	Understand English clearly and quickly, build your confidence, whilst elective classes offer extra language help where needed most.	- grammar (4) - vocabulary (4) - listening and speaking (6) - reading and writing (4) - study skills (2)	- culture and society - pronunciation and guided conversation practice - grammar workshops - vocabulary development
Intermediate (level 4)	Develop the skills built at pre-intermediate level, and apply them to a range of elective subjects.	- grammar (5) - vocabulary (4) - listening and speaking (5) - reading and writing (4) - study skills (2)	- culture and society - business communication - exam preparation skills - presentation skills - film studies
Upper-intermediate (level 5)	With a good working knowledge of English, refine your language skills for the best grade in your chosen formal international exam.	- grammar (3) - vocabulary (6) - listening and speaking (6) - reading and writing (3) - language research skills (2)	- business communication - IELTS preparation skills - Cambridge FCE - presentation skills - media studies
Advanced (level 6)	Develop linguistic accuracy and fluency and, if desired, follow an exam-based curriculum (eg. CAE, TOEFL)	- grammar (3) - vocabulary (6) - listening and speaking (6) - reading and writing (3) - language research skills (2)	- advanced business English - IELTS preparation skills - research skills - TOEFL - Cambridge CAE - university studies

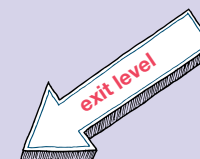
I joined this course so I could spend 11 weeks with the same classmates and teachers. This has really helped me to get to know the students and teachers better and has given me more confidence. It's definitely a challenge but I like a challenge.

Mohammed Kane
from Mali



Progression

Choose from one to four terms to suit your required outcomes. One-term option available at all levels.



	3	4	5	6
3	2 terms (22 weeks)			
3	3 terms (33 weeks)			
3	4 terms (44 weeks)			
4		2 terms (22 weeks)		
4		3 terms (33 weeks)		
5			2 terms (22 weeks)	

Level 6 available in Boston, New York, San Diego, Brisbane, Melbourne, Sydney, Brighton and London

Certificate of Business English



USA Boston, Fort Lauderdale, New York, San Diego, San Francisco **UK** Brighton, London **AUS** Brisbane, Surfers Paradise, Sydney **CAN** Toronto, Vancouver, Victoria



This course will improve your business English communication skills.

About the course

Intensive 28: this is an intensive course. It follows a general English syllabus with business English electives and is specially designed to develop your English with a particular emphasis on the use of English in business situations.

Your lessons

Morning and afternoon:
- 20 x 50-minute English lessons per week
- 8 x 50-minute business English elective lessons per week

Key facts

- clear and confident pronunciation coaching
- business writing and protocol development
- how to lead and participate in meetings
- how to present effectively using digital applications
- case studies offering strategic insight into successful organisations
- test of English for International Communication (TOEIC) preparation
- course materials included
- in Australia this is offered as an elective in the Certificate of English course and is not a VET certifying award

Business English in Action



USA Boston, Fort Lauderdale, Los Angeles, New York, San Diego, San Francisco



+ 4/8 wk in placement



Gain valuable language skills in a native English-speaking environment.

About the placement

Practise your English in real-world environments where your English skills will be enhanced by interacting with native speakers. Use your English in business environments, community organisations, educational settings and more. Meet American employees with similar interests from a wide range of sectors and backgrounds.

Sample placements

Legal: Weingrad and Weingrad **Fashion:** ADG Fashion
Travel: Adams Unlimited **Publishing:** SourceMedia
Business: Manhattan Chamber of Commerce
Trading Information Technology: Soman Dutta
Import/Export: Korin

Key facts

- an oral test is required before you can be accepted onto the course
- students must reach level 5 to be granted access to a placement where you will be able to practise and refine your English
- during your course you will learn about USA culture in a business environment
- you can choose 4 or 8 weeks for your placement
- this will take place upon completion of your English course and during the 60 days you are allowed to remain in the country (in accordance with student visa requirements)
- Study Care insurance is mandatory during the placement

International Internship Programme



CAN Toronto



8-12 weeks English, up to 12 weeks internship



Gain valuable experience with a local business after your course.

About the course

Intensive 28: depending on your entry level of English you will follow a language training course, including units in Business English, English for the Workplace and TOEIC for 8-12 weeks. All students must complete a minimum of eight weeks of language preparation.

You'll be helped in training for your interview in order to successfully gain an internship. Staff will be in contact with you to check on progress, and on completion you'll receive a valuable reference. The unpaid internship will last for up to three months, depending on the needs of the company.

Your lessons

- Morning and afternoon
- 28 x 50-minute lessons per week

Key facts

- training in all work-focused language areas
- course books and materials included
- students must reach at least level 4 to secure an internship
- up to 3 months experience unpaid internship
- portfolio of work experience documents
- students must be at least 17 years old

Work Placement



CAN Victoria, Toronto



+ 24 wks work experience



Obtain the necessary skills and opportunities to find paid employment after your course.

About the course

Intensive 28: this is an intensive course. Follow a general English syllabus with business English electives as well as English for the workplace and TOEIC for 24 weeks. During your course you will receive coaching in how to find and keep a job, including interview skills and successful job hunting. Note that we cannot guarantee you a job, but it is rare that students are unable to find work.

Your lessons

Morning and afternoon:
- 28 x 50-minute lessons per week
- 8 x 50-minute electives - including business English, TOEIC preparation, resume writing, interview skills

Key facts

- training in all work-focused language areas
- assistance and coaching in finding a job
- work period is at completion of studies and cannot exceed the period of study
- study permit and off-campus work permit required
- students must reach level 4 to take advantage of this service
- minimum age 18

choose as
an elective
or full-time

Cambridge ESOL, TOEFL, IELTS and TOEIC examinations are globally recognized by universities, employers and government agencies. Our experienced teachers and structured courses prepare you to achieve the highest possible results in these challenging examinations.

KEY FACTS

- diagnostic test given at start of the course
- preparation in each of the four skill areas: reading, writing, listening and speaking
- practice tests administered regularly for immediate feedback
- progress continually monitored for targeted skill-building
- test-taking strategies emphasised for maximum score potential
- regular counselling and feedback provided by experienced exam teachers
- course materials included

Cambridge ESOL



USA Fort Lauderdale, New York, San Diego, San Francisco
UK Brighton, Cambridge, London, Oxford **AUS** Brisbane, Melbourne, Surfers Paradise, Sydney
NZ Auckland **CAN** Vancouver, Victoria



FCE: 4, CAE: 5, CPE: 6



Your lessons

Intensive 28: choose either 28, 20 or 8 lessons of exam preparation. Lessons are morning and afternoon.

Standard 20: exam preparation classes only.

Your choices

Exam 28

- 28 x 50-minute exam preparation lessons
- Brisbane, Melbourne and Sydney

Exam 20

- 20 x 50-minute exam preparation lessons
- plus 8 x 50-minute electives of your choice
- Brighton, Cambridge, London and Oxford, New York and San Diego

Exam 8

- 8 x 50-minute elective lessons of exam preparation
- plus 20 x 50-minute general English lessons
- Auckland, Fort Lauderdale, San Francisco, Surfers Paradise, Vancouver and Victoria

Term Dates

- Jan 3 – Mar 9 (10 weeks)
- Apr 2 – Jun 8 (10 weeks)
- Jun 18 – Aug 24 (10 weeks)
- Sept 24 – Nov 30 (10 weeks)

Where and when?

	January	April	June	September
Auckland	-	FCE	-	FCE
Brighton	FCE	FCE	-	FCE
Brisbane	FCE	FCE	FCE	-
Cambridge	FCE/CAE	FCE/CAE	-	FCE/CAE
Fort Lauderdale	FCE	FCE	-	FCE
London	FCE	FCE	-	FCE
Melbourne	FCE	-	-	FCE
New York	FCE/CAE	FCE/CAE	-	-
Oxford	FCE	FCE/CAE	-	FCE/CAE
San Diego	FCE/CAE	FCE/CAE	-	FCE/CAE
San Francisco	FCE/CAE	FCE/CAE	-	FCE/CAE
Surfers Paradise	FCE	-	-	FCE
Sydney	FCE/CAE	FCE/CAE	FCE/CAE	FCE/CAE
Vancouver	-	-	-	FCE
Victoria	-	FCE	-	FCE

I chose this course because it is very well known in Europe and will help me in the future – at university and in my career. The teachers have a lot of experience and are really good at preparing us for the exam.

Emma Reuterdahl
from Sweden



IELTS



UK Cambridge, London, Oxford
AUS Brisbane, Melbourne, Surfers Paradise, Sydney
NZ Auckland



Your choices

Exam 20

- 20 x 50-minute exam preparation lessons
- plus 8 x 50-minute electives of your choice
- London, Brisbane, Melbourne, Surfers Paradise, Sydney

Exam 8

- 8 x 50-minute elective lessons of exam preparation
- plus 20 x 50-minute general English lessons
- Cambridge, Oxford, Brisbane, Melbourne, Surfers Paradise, Sydney and Auckland (In Australia this version is offered as Certificate of English plus electives.)

Your lessons

Intensive 28: To ensure maximum direct teacher contact this course is only offered as an intensive course. Lessons are morning and afternoon.

TOEFL



USA New York, Boston, Fort Lauderdale, Los Angeles, San Francisco, Seattle/Tacoma (summer only), San Diego **CAN** Toronto



Your choices

Exam 20

- 20 x 50-minute exam preparation lessons
- plus 8 x 50-minute electives of your choice
- Boston Downtown, New York, San Francisco

Exam 8

- 8 x 50-minute elective lessons of exam preparation
- plus 20 x 50-minute general English lessons
- Fort Lauderdale, Los Angeles, San Diego, Seattle/Tacoma (summer only) and Vancouver

Your lessons

Intensive 28: choose either 20 lessons of exam preparation or 8 lessons of exam preparation.

Standard 20: exam preparation classes only.

TOEIC



CAN Toronto, Vancouver, Victoria



Your choices

Exam 20

- 20 x 50-minute exam preparation lessons
- plus 8 x 50-minute electives of your choice
- Victoria, Toronto

Exam 8

- 8 x 50-minute elective lessons of exam preparation
- plus 20 x 50-minute general English lessons
- Victoria, Toronto, Vancouver

Your lessons

Intensive 28: choose either 20 lessons of exam preparation or 8 lessons of exam preparation.

Standard 20: exam preparation classes only.



Your pathway to university success. Choose from over 70 institutions worldwide.

This Embassy Pathway course is for students intending to pursue university and further education courses in the USA, Canada, the UK and Australia. Successful completion of this course guarantees entry into one of our university or educational partners without having to take an IELTS or TOEFL examination.

10, 20, 30 or 40 wks



equivalent to IELTS 4.5 (minimum), TOEFL 30



About the course

Intensive 28: this is an intensive course which provides the most effective, guaranteed pathway to a university or educational partner, combining intensive English language training with academic study skills development. University entrance is guaranteed but only on successful completion of the course, and provided you meet the academic entrance requirements of our partners.

Key facts

- Embassy Pathways syllabus combines intensive language development with study skills training
- five modules per term: reading, writing, listening, speaking and study skills
- level of challenge increases as the course progresses
- expert guidance through our university partners' academic admissions process provided prior to enrolment on this course
- course materials included
- Certificate of Achievement, awarded by Academic Board

Assessment

- entry test on arrival
- continuous assessment via classwork and course assignments: two essays, oral presentation and research report
- mid-term and end of term tutorials and progress reports
- exit test on completion

Entry requirement

High school completion and successful conditional acceptance of academic qualifications.

Stage 1

Intermediate: equivalent to IELTS 4.5 / TOEFL 30

Stage 2

Upper-intermediate: equivalent to IELTS 5.0 / TOEFL 35

Stage 3

Pre-advanced: equivalent to IELTS 5.5 / TOEFL 46

Stage 4

Advanced: equivalent to IELTS 6.0 / TOEFL 60



English for Academic Purposes



AUS Brisbane, Melbourne, Sydney

With 39 universities and a large number of vocational colleges, Australia boasts a strong reputation for excellence and affordability. Our partners reflect this diversity of choice and career aspirations.

32 Partner institutions including:

- University of West Sydney
- James Cook University
- La Trobe University
- Australian Institute of Applied Science
- TAFE New South Wales

2012 Start Dates

- February 6th
- April 16th
- June 25th
- September 3rd
- November 12th

2013 Start Dates

- February 4th

Diploma for University Entrance



CAN Toronto, Victoria

There are over 80 universities and colleges in Canada, almost all within the state run system, and offering internationally recognized degree programs at an affordable price. The course provides the English qualification you need to succeed in the Canadian system.

Partner institutions including:

- Thompson Rivers University
- Royal Roads University
- Douglas College
- Centennial College

2012 Start Dates

- January 3rd
- April 2nd
- June 25th
- September 24th

2013 Start Dates

- January 2nd

Diploma for University Entrance



UK Cambridge

There are currently 150 university and colleges in the UK, including some of the world's oldest and most prestigious. The course combines intensive English language training with academic study skills designed to aid successful integration into the British education system.

Partner institutions including:

- Anglia Ruskin University
- Roehampton University
- University of Greenwich

2012 Start Dates

- January 3rd
- April 2nd
- June 25th
- September 24th

2013 Start Dates

- January 2nd

Diploma for University Entrance



USA All Study Centers

With almost 5000 institutions, the United States has the largest and most respected higher education system in the world. Reflecting this incredible choice of opportunities, our partners include state universities, elite private liberal arts colleges and affordable community colleges.

35 Partner institutions including:

- Alfred University
- Woodbury University
- Manhattan College
- Pacific Lutheran University
- Dean College
- Albright College
- Fisher College

2012 Start Dates

- January 3rd
- April 2nd
- June 25th
- September 24th

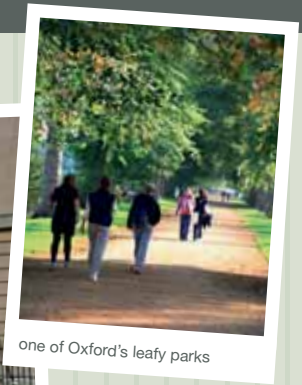
2013 Start Dates

- January 2nd





the Bridge of Sighs



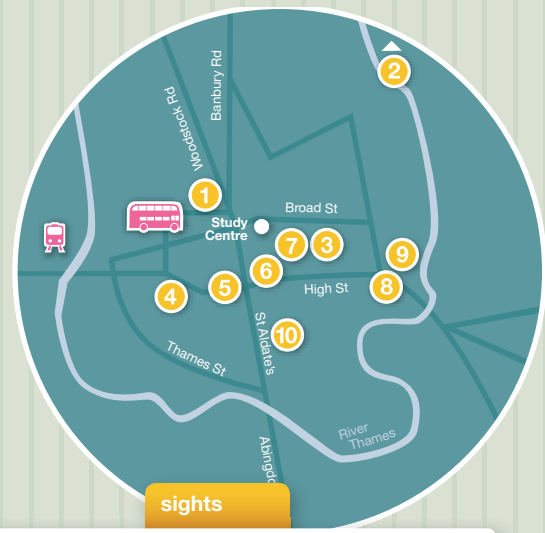
one of Oxford's leafy parks



taking a picnic in front of Christchurch College

Oxford

Surrounded by beautiful historic university buildings, our central, newly renovated Study Centre provides an exciting, modern learning environment.



sights

accommodation

Residential

Blue Boar: Walking distance from school (minimum age 18).
- twin rooms
- en suite
- self-catering

Homestay

Available across the Oxford area.
- single and twin rooms
- half-board (14 meals)
- bed and breakfast option (minimum age 18)

facilities

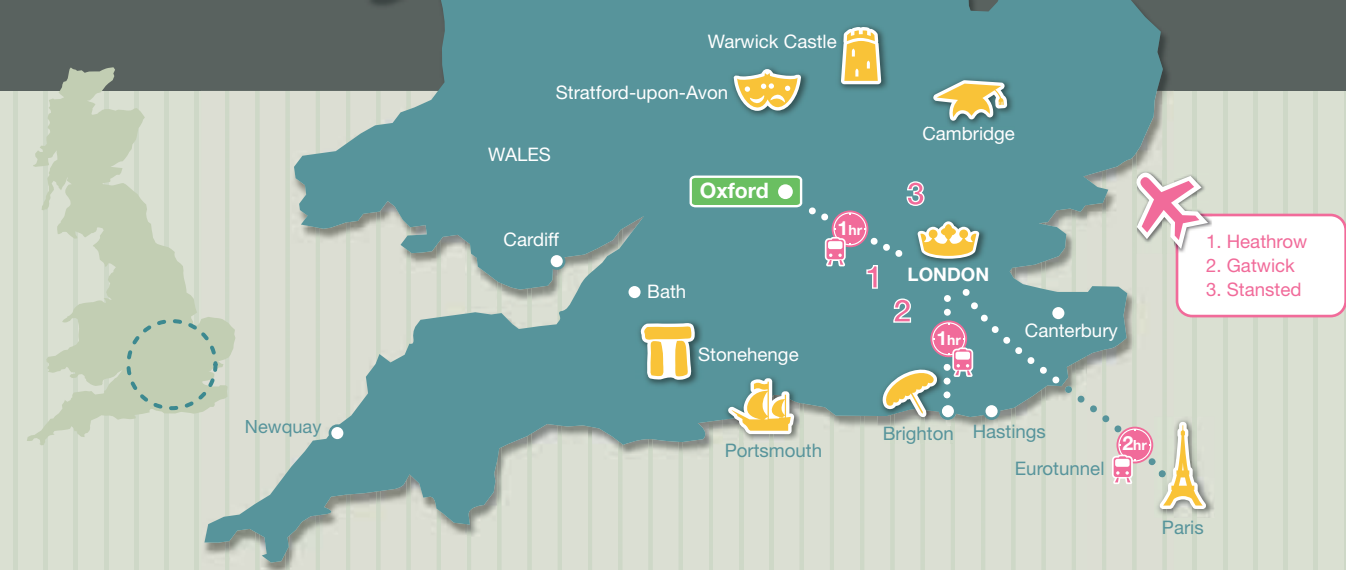
- WiFi-enabled
- IT suite
- interactive whiteboards
- resource centre
- student lounge
- activities
- university counselling
- city centre location

courses

- Certificate of English for Beginners
- Exam preparation: FCE, CAE, IELTS (elective)
- Language Year Abroad
- One-to-one lessons

- 1 Ashmolean Museum
- 2 Cherwell Boathouse – start your punting here
- 3 Bodleian Library – one of the oldest in Europe
- 4 Oxford Castle
- 5 Carfax Tower – 99 steps to see the Dreaming Spires
- 6 Covered Market – great shopping
- 7 Radcliffe Camera – a beautiful old circular library
- 8 Botanic Gardens – the oldest in Britain
- 9 Magdalen College
- 10 Christ Church Cathedral

- Discover historic Britain at Bath and Stonehenge
- Visit Stratford-upon-Avon, birthplace of Shakespeare
- Enjoy a sightseeing trip to the capital by train in under an hour
- Visit historic Warwick Castle



1. Heathrow
2. Gatwick
3. Stansted



boating on the river



shopping in Oxford's historic Covered Market



Oxford's famous Bodleian Library



Oxford Museum

photos



exterior



centre director
Victoria Moyle



classroom



student lounge



reception



library



IT suite



break area

I chose Oxford because of its reputation – I think studying here will look good for future employers. I really like the fact that it is a student city, surrounded by prestigious universities, and not far away from the capital.

Kelly Mayjonade from France



the time of your life
home away from home
my Embassy life
teaching
success
courses





the world famous Big Ben is a short train journey away

London

Our modern purpose-built centre near historic Greenwich is less than 20 minutes from the heart of one of the most exciting capitals in the world.

accommodation

Residential (available summer only)
Located next to our school, the residence provides friendly and safe accommodation where you'll live alongside British students.

- minimum age 16
- single and twin rooms plus mini-studios
- en suite
- self-catering and half-board at school canteen (14 meals)

facilities

- wifi-enabled
- IT suite
- interactive whiteboards
- student lounge
- activities
- university counselling
- library
- cafeteria

Homestay

Available across the London area.

- single and twin rooms
- half-board (14 meals)
- bed and breakfast option (minimum age 18)

courses

- Certificate of Business English
- Certificate of English
- Exam preparation: FCE, IELTS (core)
- Language Year Abroad
- One-to-one lessons

photos



exterior



residence



centre director
Andy Quin



interior



reception



cafeteria



IT suite



sights

- 1 Camden Market
- 2 Oxford Street shopping
- 3 Covent Garden
- 4 Soho – great bars
- 5 Buckingham Palace
- 6 Houses of Parliament
- 7 The London Eye
- 8 Borough Market: a gastronomic delight
- 9 Tower of London
- 10 Canary Wharf
- 11 O2 Arena
- 12 Royal Observatory

London is such a historic place but also has an abundance of cultures. I got to know London like a real local person, visiting some wonderful places. For me this will be an unforgettable experience.

Kiera Yan from China



1. Heathrow
2. Gatwick
3. Stansted



Cambridge is famed for its beautiful architecture

Cambridge

Our centrally located Study Centre is a short cycle ride from all the historic attractions of this world famous city.

accommodation

Residential
Our modern residence is a short cycle ride away.

- minimum age 18
- twin and single rooms
- en suite
- shared kitchen facilities for self-catering

facilities

- WiFi-enabled
- IT suite
- interactive whiteboards
- activities
- university counselling
- cafeteria
- courtyard and gardens
- additional classrooms at the beautiful Queens campus

Homestay

Available across the Cambridge area.

- single and twin rooms
- half-board (14 meals)
- bed and breakfast option (minimum age 18)

courses

- English for Academic Purposes
- Certificate of English
- Diploma for University Entrance
- Exam preparation: FCE, CAE, IELTS (elective)
- Language Year Abroad
- One-to-one lessons

photos



exterior



centre director
Frank Pinner



cafeteria



classroom



interior



sights

- 1 Jesus Green
- 2 Midsummer Common – enjoy a game of football with friends
- 3 Trinity College
- 4 Punting on the River Cam
- 5 The Backs – a beautiful walk behind the famous colleges
- 6 Kings College – hear the famous choir of Kings College
- 7 Fitzwilliam Museum



Spend a day by the seaside at Great Yarmouth



Visit the birthplace of Shakespeare at Stratford-upon-Avon

Cambridge is a great combination of history, culture and fun! The centre is a really friendly place and the teachers are keen to help you improve your English.

Laura Blanco from Columbia

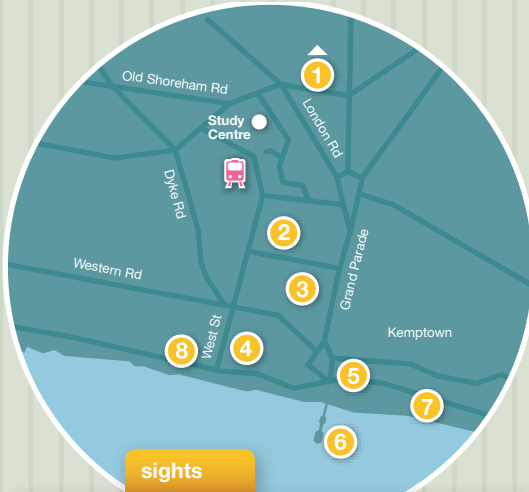


embassyces.com



Brighton

Located in the heart of this vibrant seaside city, the Study Centre is within easy walking distance of the sea, cafés and great shops.



accommodation

facilities

Residential (available summer only)

There are two residence options available in the summer only. Paris House is located in the popular area of Hove.

- single and twin rooms
- en suite
- cafeteria in Brighton Study Centre for half-board meal plan

- WiFi-enabled
- IT suite
- interactive whiteboards
- student lounge
- activities
- university counselling
- cafeteria

Additional residential beds are also available at the Study Centre. Facilities include: student lounge, internet café and laundry rooms.

courses

Homestay

Available across the Brighton area.

- single and twin rooms
- half-board (14 meals)
- bed and breakfast option (minimum age 18)

- Certificate of Business English
- Certificate of English
- Exam preparation: FCE
- Language Year Abroad

photos



exterior



classroom



cafeteria



residential bedroom



IT suite



interior



residence

I love Brighton! The city is vibrant, lively and has a cosmopolitan atmosphere. The teachers are wonderful and the interactive whiteboards in class are really helpful for learning.

Ji Youn Lee from Korea



Hastings

The Study Centre is located in a charming restored Victorian building close to the picturesque seafront and old town centre of Hastings.

Hastings is a small and peaceful town by the sea and when it is warm and the sun is shining it's great to go sunbathing or have a barbecue and relax with your friends. I enjoy every minute of my time here.

Alexander Vorotnyi from Ukraine

accommodation

facilities

courses

Homestay

Available across the Hastings area.

- single and twin rooms
- half-board (14 meals)

- WiFi-enabled
- IT suite
- interactive whiteboards
- student lounge
- games room
- university counselling
- attractive grounds
- cafeteria

- Language Year Abroad
- Certificate of English
- Certificate of English for Beginners
- One-to-one lessons



centre director
Reg Veale



exterior



classroom



interior



cafeteria



New York

Our fantastic flagship Manhattan Study Centre is ideally located in the city that never sleeps! Walking distance from the Empire State Building, Madison Square Garden and Times Square.



the Statue of Liberty



the world's most famous skyscrapers



New York's famous yellow cabs

Manhattan College

Embassy pathway students can study at this stunning, highly-ranked private college, just 50 minutes from central Manhattan

Pathways Programme
See Page 26

accommodation

- Residential**
Experience life on a typical American college campus.
 - twin rooms
 - student lounge
 - kitchen facilities
 - laundry rooms
- Homestay**
Located in Long Island, New Jersey, Queens and Brooklyn.
 - single rooms
 - half-board (14 meals)
 - bed and breakfast option (minimum age 18)

facilities

- wifi-enabled
- IT suite
- student lounge
- library
- gym
- book shop

courses

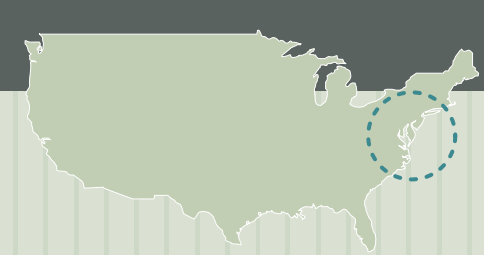
- Diploma for University Entrance
- Language Year Abroad



historic college green

I think of New York as the capital of the world. Whatever you are interested in you can find it here. I like the mix of different people and the rhythm of the city. The location of the centre is fantastic and it has great facilities. I love my teacher and his way of teaching – and the use of interactive whiteboards makes learning so much easier.

Neni Rojas from Spain



Central Park is in the heart of New York



sights

- 1 Museum Mile – home of the Met, Guggenheim and many more
- 2 Radio City Music Hall
- 3 Times Square
- 4 Empire State Building
- 5 World Trade Centre Memorial
- 6 Ellis Island
- 7 Statue of Liberty

- Fun at the Six Flags theme park
- Enjoy the fabulous beaches in the Hamptons
- The Catskill Mountains – summer hiking or winter skiing

accommodation

Residential

Our bright, modern Manhattan residence, only a 25-minute direct subway ride from the Study Centre, offers 24-hour security, an exercise room, laundry facilities, comfortable lounges with cable television.

- minimum age 16
- single and twin rooms
- shared bathrooms

facilities

- WiFi-enabled
- IT suite
- interactive whiteboards
- student lounge
- activities
- university counselling
- TOEIC testing centre
- fantastic Manhattan residence

courses

- Business English in Action
- Certificate of Business English
- Certificate of English
- Certificate 8
- Certificate of English for Beginners
- Diploma for University Entrance
- Exam Preparation: FCE, CAE, TOEFL
- Language Year Abroad
- One-to-one lessons
- Travel and Culture Programme
- English Plus Dance: from hip hop to ballet, the Broadway Dance Center is in walking distance from our Study Centre. Regular classes, flexible schedules and minimum of 10 classes.

photos



exterior



centre director Greg Bartels



residential bedroom



student lounge



internet lounge



IT suite



classroom



reception



Brooklyn Bridge

Boston

Study at our modern downtown Study Centre, and enjoy Boston's vibrant and historic commercial district, just a short stroll from Macy's, Quincy Market and Boston Common.



Quincy Market

The people here are so friendly and the location of the centre is perfect – everything is so close. This has been an awesome experience which will help me very much in my career and in my life.

Mohammed Al Habib from Saudi Arabia



accommodation

Residential

Only a 20-minute subway ride from the Study Centre. There are excellent facilities including a fitness centre and cafeteria.

- minimum age 16
- twin rooms
- en suite bathrooms

Homestay

Available across the Greater Boston area.

- single and twin rooms
- half-board (14 meals)

facilities

- wifi-enabled
- IT suite
- interactive whiteboards
- student lounge
- activities
- university counselling
- impressive interior design
- close to popular landmarks
- official TOEIC testing centre

courses

- Business English in Action
- Certificate of Business English
- Certificate of English
- Certificate 8
- Diploma for University Entrance
- English for Beginners
- Exam preparation: TOEFL
- Language Year Abroad
- One-to-one lessons
- Travel and Culture Programme

photos



exterior



IT suite



interior



interior



centre director
Linda Walsh



classroom



IT suite



sights

- 1 Science Museum
- 2 Harvard University
- 3 Aquarium
- 4 Faneuil Hall – Quincy Market and great shopping
- 5 Esplanade – beautiful riverside setting for free concerts and movies
- 6 Freedom Trail – explore Boston's historic past, starting at Boston Common
- 7 Copley Square – visit the Prudential Tower
- 8 Fenway Park – home of the Boston Red Sox
- 9 Museum of Fine Arts



Relax on the beautiful beaches of Cape Cod



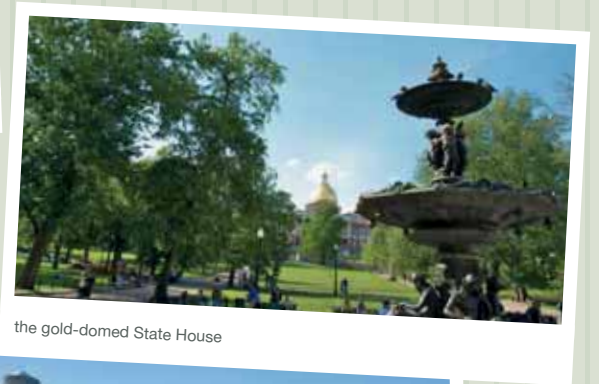
Visit Harvard, the oldest and most prestigious institute of higher learning in the USA



Enjoy the thrills of Six Flags Theme Park



George Washington statue



the gold-domed State House



Boston Harbor

Dean College

Embassy Pathway students can study on the leafy campus of Dean College, a 50-minute train ride from downtown Boston.

Pathways Programme
See Page 26

accommodation

Residential

Experience life on a typical American college campus.

- single and twin rooms
- student lounge
- kitchen facilities
- laundry rooms

facilities

- WiFi-enabled
- IT suite
- student centre
- library
- gym
- tennis courts

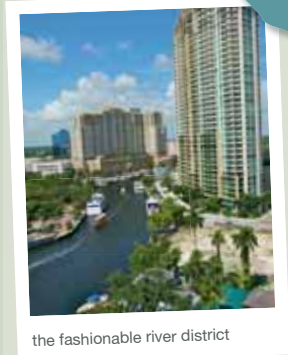
courses

- Certificate of English (summer only)
- Diploma for University Entrance
- Language Year Abroad



International Study Centre

Fort Lauderdale



Our bright Study Centre provides an excellent learning environment on stylish Las Olas Circle in the heart of the city, and is minutes away from fabulous beaches.

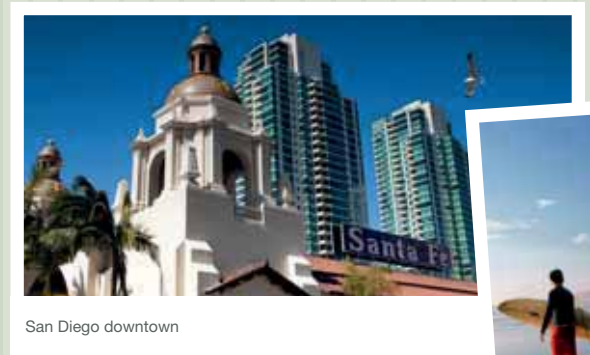
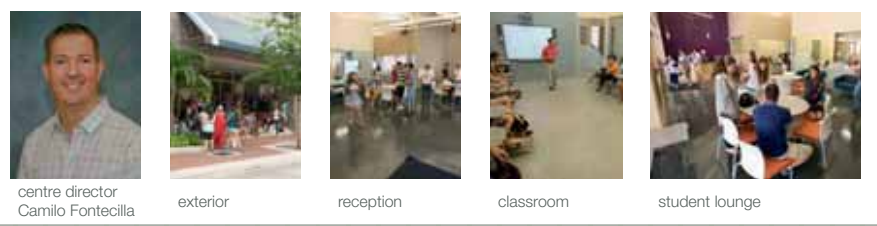


- 1 Galleria Mall
- 2 Hugh Taylor Birch State Park
- 3 Fort Lauderdale Beach
- 4 Sawgrass Mills Outlet shops
- 5 Broward Center for the Performing Arts
- 6 Museum of Discovery and Science
- 7 Las Olas Boulevard for boutique shopping and fine dining
- 8 The Art Institute of Fort Lauderdale
- 9 John Lloyd Beach State Park
- 10 Intracoastal Waterway Boat Rides

- Take an airboat trip around the wetlands of the Everglades
- Enjoy the many theme parks in Orlando
- Beaches and art deco buildings in South Beach, Miami

accommodation	facilities	courses
Residential Across from the ocean and a 20-minute bus ride from the school. Facilities include: air conditioning, cable TV, laundry and a swimming pool. <ul style="list-style-type: none">- minimum age 16- single and twin apartment rooms- en suite- self-catering Homestay Available across the Fort Lauderdale area. <ul style="list-style-type: none">- single and twin rooms- half-board (14 meals)	<ul style="list-style-type: none">- WIFI-enabled- IT suite- interactive whiteboards- activities- university counselling- residence with pool- close to the beach	<ul style="list-style-type: none">- Business English in Action- Certificate of Business English- Certificate of English- Certificate 8- Diploma for University Entrance- Exam preparation: FCE, TOEFL- Language Year Abroad- One-to-one lessons- Travel and Culture Programme

photos



San Diego

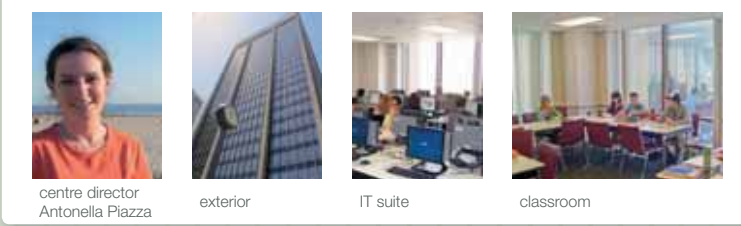
Based in a modern, well-equipped building, our San Diego Study Centre is just minutes from great shopping and the historic Gaslamp Quarter.

- 1 Old Town Historic District
- 2 San Diego Zoo
- 3 San Diego Sea World
- 4 Harbour tours
- 5 Seaport Village
- 6 Horton Plaza – shopping mall
- 7 Gaslamp District – historic quarter
- 8 Coronado Beach

- Relax on the beach at La Jolla
- Hiking in the Anza Borrego Desert State Park

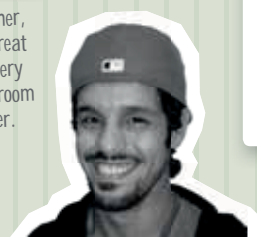
accommodation	facilities	courses
Residential Our residence options are walking distance from the Study Centre. <ul style="list-style-type: none">- minimum age 18- single and twin rooms- private and shared bathrooms- self-catering- single en suite studios with kitchenettes also available (age 18+) Homestay Available across the San Diego area. <ul style="list-style-type: none">- single and twin rooms- half-board (14 meals)	<ul style="list-style-type: none">- WIFI-enabled- IT suite- interactive whiteboards- student lounge- activities- university counselling- TOEIC testing centre- fabulous views- excellent transport links- short distance from beach	<ul style="list-style-type: none">- Business English in Action- Certificate of Business English- Certificate of English- Diploma for University Entrance- Exam preparation: TOEFL, FCE, CAE- Language Year Abroad- One-to-one lessons- Travel and Culture Programme- English Plus Surfing: enjoy professional surfing lessons after English classes. This course can be booked after arrival

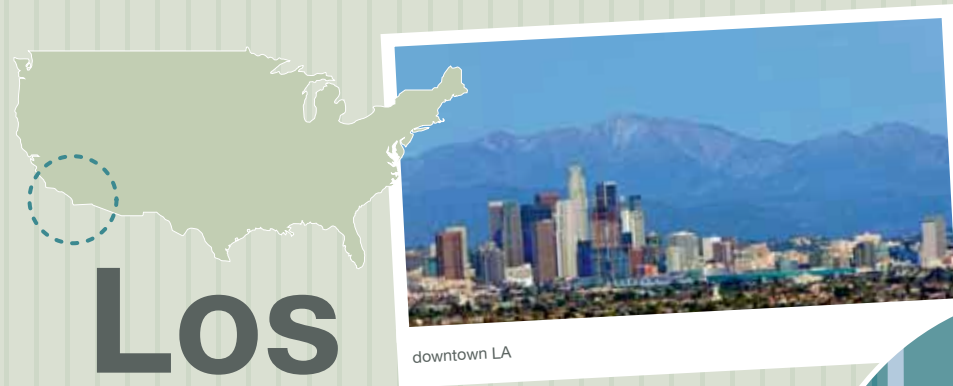
photos



I've chosen San Diego because of the weather, beaches and the location. I've met such great people here and the teachers have been very helpful. The use of technology in the classroom has also made learning easier and faster.

Abdul Aziz Alsheri from Saudi Arabia





Los Angeles

Our newly renovated Study Centre is located in the lively community of Long Beach and just a short distance from the ocean and beautiful beaches of California.

accommodation

Residential

The residence is a short walk from the beach, and a 25-minute bus ride from the school. Facilities include: kitchen, dining area, air conditioning, cable TV, balcony as well as access to a large swimming pool, tennis courts, gymnasium and BBQ facilities.

- minimum age 16
- twin room
- en suite
- self-catering

Homestay

Available across the Los Angeles and Long Beach area.

- single and twin rooms
- half-board (14 meals)

facilities

- WiFi-enabled
- IT suite
- interactive whiteboards
- student lounge
- activities
- university counselling
- courtyard
- roof terrace
- bus and trams to popular LA attractions

courses

- Business English in Action
- Certificate of English
- Diploma for University Entrance
- Exam preparation: TOEFL
- Language Year Abroad
- One-to-one lessons
- Travel and Culture Programme

photos



centre director
Francesca Andrews



exterior



IT suite



interior



student lounge



sights

- 1 Hollywood and downtown LA – 30 minutes from the Study Centre
- 2 Disneyland – 40 minutes from the Study Centre
- 3 City Place Shopping Centre
- 4 Pine Avenue – restaurants and clubs
- 5 Long Beach Aquarium
- 6 Shoreline Village – restaurants near the Queen Mary
- 7 Belmont Shore – a charming beachside community

- A ferry ride to the beautiful island of Santa Catalina
- Explore the Joshua Tree National Park
- Discover the thrills and excitement of Las Vegas



1. Los Angeles Intl.
2. Long Beach
3. Burbank
4. San Diego Intl.



chic Beverly Hills



Pathways
Programme
See Page 26

Woodbury University

We also offer courses on the charming campus of Woodbury University, right in the hub of dynamic Burbank, close to movie studios and excellent entertainment.

accommodation

Residential

Experience life on a typical American college campus.

- single and twin rooms
- student lounge
- kitchen facilities
- laundry rooms

Homestay

Available across the Los Angeles area.

- single rooms
- half-board (14 meals)

facilities

- student centre
- gym
- swimming pool
- library

courses

- Diploma for University Entrance
- Language Year Abroad

photos



campus

I chose California because of its great weather. I love the location of the centre – it is very close to the ocean – and the facilities are very modern. Embassy LA is a big family for me!

Minjoo Choi from Korea



the time of your life

home away from home

my Embassy life

teaching

success

courses

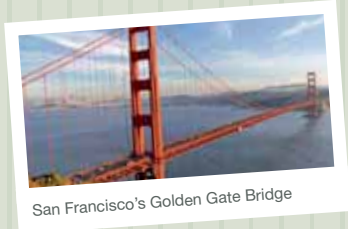
location
Woodbury | LA



the world famous streetcar line



playing football in Alamo Square



San Francisco's Golden Gate Bridge

San Francisco

Our bright, modern Study Centre is situated in the heart of this vibrant city, only a block from the historic cable car line and Union Square.



accommodation

Residential

Our residence options are within easy reach of the school.

- minimum age 16
- single and twin rooms
- en suite and shared bathrooms
- half-board and self-catering

Homestay

Available across San Francisco.

- single and twin rooms
- half-board (14 meals)
- bed and breakfast option (minimum age 18)

facilities

- centrally located
- WiFi-enabled
- IT suite
- interactive whiteboards
- student lounge
- activities
- university counselling
- close to historic neighbourhoods

courses

- Business English in Action
- Certificate of Business English
- Certificate of English
- Diploma for University Entrance
- Exam preparation: FCE, CAE, TOEFL
- Language Year Abroad
- One-to-one lessons
- Travel and Culture Programme

sights

- 1 Fisherman's Wharf
- 2 North Beach – great Italian dining
- 3 Chinatown
- 4 Union Square – a great shopping experience
- 5 The Museum of Modern Art
- 6 Pac-Bell Park – home of the Giants baseball team
- 7 The Castro – San Francisco's alternative culture



Enjoy great views of the bay and San Francisco from Sausalito



Take a wine tasting trip around the vineyards of Napa Valley



A road trip along the Pacific Coast Highway which leads to Monterey, home to colonies of seals and sea lions



hanging out in Chinatown



go shopping with friends in the city centre

photos



exterior



centre director John Lograsso



student lounge



reception



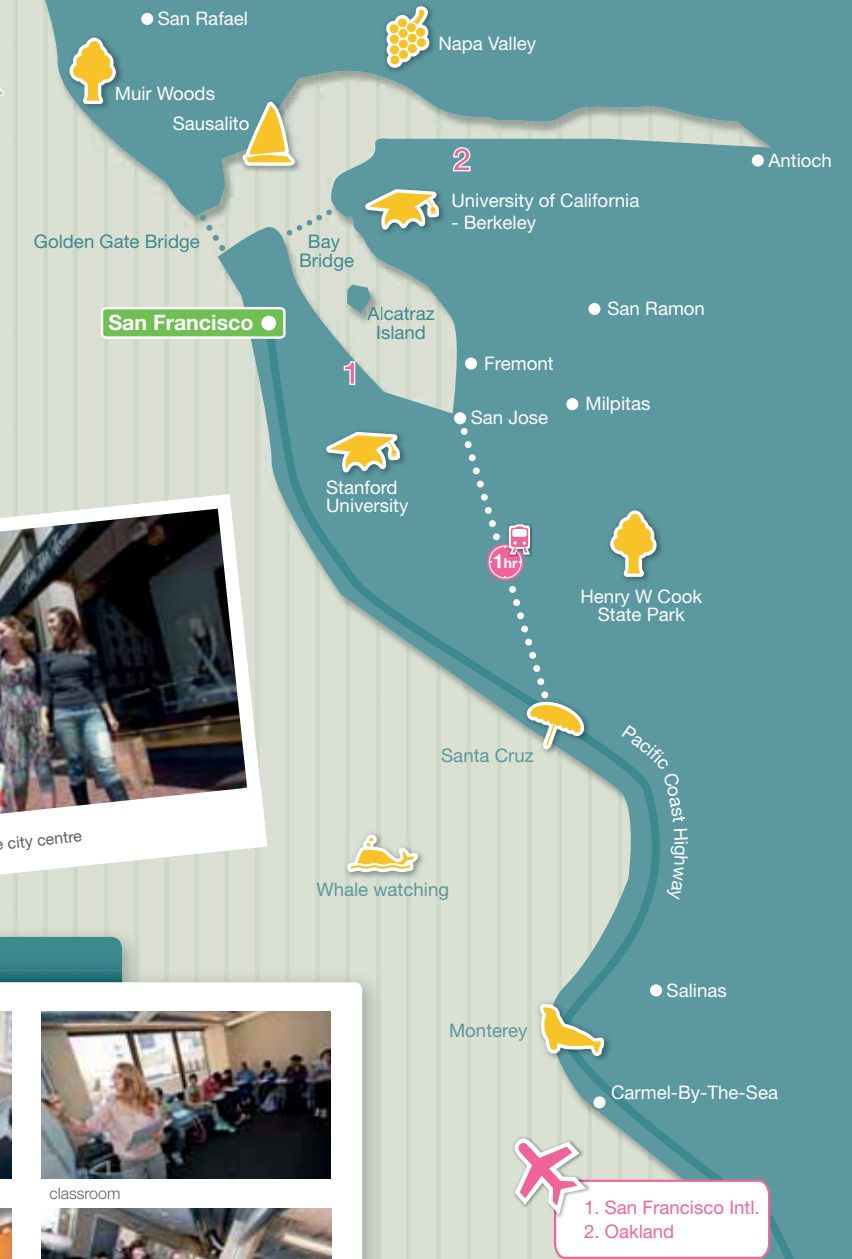
classroom



hallway



break area



see the seals at Pier 39

If you think you will be homesick, I highly recommend choosing Embassy San Francisco Study Center. It's a combination of many different cultures and I have made a lot of friends while studying.

Cheng-Han Lin from Taiwan



explore the city using convenient public transport



sights

- 1 Owen Beach
- 2 Point Defiance Zoo and Aquarium
- 3 Tacoma Museum of Glass
- 4 Wright Park – arboretum and conservatory
- 5 Broadway Centre for the Performing Arts
- 6 Lakewold Gardens – stunning landscaped gardens
- 7 LeMay Automobile Museum
- 8 Sprinker Recreation Center
- 9 Tacoma Dome Exhibition Hall – catch a concert

- Visit the Space Needle and Pike Place Market in Seattle
- Go hiking in Mount Rainier National Park
- Enjoy a skiing trip in the surrounding mountains



the famous Seattle skyline

Seattle/ Tacoma

Our centre is located minutes from the main campus of Pacific Lutheran University, with access to a wonderful academic environment.

accommodation

Residential
The residence is situated 20 minutes from the Study Centre.
- twin rooms
- en suite bathrooms
- self-catering

Homestay
Available across the Tacoma area.
- single and twin rooms
- half-board (14 meals)

facilities

- WiFi-enabled
- IT suite
- interactive whiteboards
- student lounge
- activities
- university counselling
- campus cafeteria

courses

- Certificate of English (summer only)
- Diploma for University Entrance
- Exam preparation: TOEFL (summer only)
- Language Year Abroad
- One-to-one lessons
- Travel and Culture Programme (summer only)

photos



interior



exterior



on campus

I really like my life here because it is so different from my hometown – the food and the weather. The teachers and the staff here are really kind. My dream is to become an English teacher in Japan so this is a great experience for me.

Erika Shimabukuro from Japan



1. Seattle Tacoma
2. Vancouver



stunning mountain views from the city



sights

- 1 Sheraton Vancouver Wall Centre: impressive skyscraper
- 2 Vancouver Art Gallery
- 3 Chinatown
- 4 Downtown
- 5 University of British Columbia
- 6 Vancouver City Hall
- 7 Oakridge Centre: shopping centre



OPENING
2012

Vancouver

Our Vancouver Study Centre will be the ideal modern learning environment in this picturesque waterfront city, Canada's gateway to the Pacific.

accommodation

Homestay
Available across the Vancouver area.
- single and twin rooms
- half-board (14 meals)

facilities

- WiFi-enabled
- interactive whiteboards
- IT suite
- student lounge
- activities
- university counselling

courses

- Certificate of English
- Language Year Abroad
- Exam Preparation: TOEFL, FCE



This school was formerly known as Pacific Gateway International College



Victoria's historic harbour



outside the Parliament Buildings

Victoria

Our Study Centre is located in a heritage building in the heart of downtown Victoria, the Capital City of British Columbia. With Canada's mildest climate, you can enjoy an outdoor lifestyle all year round.



accommodation

Homestay

Available across the Victoria area.

- single rooms
- half-board (14 meals)
- full board and breakfast only options are also available on request

Residential

During the summer months a variety of university campus style residences are also available (see www.embassyces.com for details).

facilities

- WiFi-enabled
- IT suite
- interactive whiteboards
- student lounge
- university counselling

courses

- Certificate of Business English
- Certificate of English
- Exam Preparation: FCE, TOEIC
- Language Year Abroad
- Power Speaking Programme
- Work Placement

sights

- 1 Parliament Buildings
- 2 Market Square Shopping
- 3 Royal BC Museum
- 4 Craigdarroch Castle
- 5 China town
- 6 Empress Hotel
- 7 Centennial Square
- 8 Miniature World



Experience whale watching in the Juan de Fuca Strait



Tour historic Craigdarroch Castle



Sail across the Straits to visit Vancouver



1. Vancouver
2. Victoria International
3. Seattle Tacoma



canoeing



whale watching off the coast

Victoria is a great city to live in and learn English. It's a nice place and the people are very helpful – I'm really enjoying my time here and learning lots of English.

Lucas Guanabara from Brazil



photos



exterior



classroom



student lounge



IT suite



centre director
Megan Domenichelli



reception



hallway

Images courtesy of Tourism Victoria.



the time of your life
home away from home
my Embassy life
teaching
success
courses

location
Victoria



historic downtown



explore the Island



enjoy the harbour



embassyces.com

This school was formerly known as Pacific Gateway International College



the lakeside metropolis



enjoy a boat ride around Toronto's stunning waterfront



sights

- 1 CN Tower
- 2 Entertainment District
- 3 Rogers Stadium: home of the Bluejays
- 4 Centreville Amusement Park
- 5 Casa Loma Museum
- 6 Kensington Market
- 7 Harbourfront Centre
- 8 Yorkville Shopping District
- 9 Art Gallery of Ontario (AGO)

- Niagara Falls Day Trip
- Take the ferry to the beaches on the Lake Ontario Islands
- Enjoy a weekend excursion to French speaking Montréal
- Hop across the border for a weekend in the USA

photos



exterior



centre director
Melissa Paola



reception



student lounge



classroom



IT suite



classroom



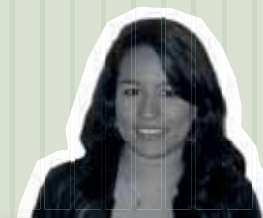
classroom

Toronto

Our bright modern, Study Centre is located on Bloor Street in the heart of Toronto's vibrant shopping district, within easy walking distance of all the major attractions of Canada's largest city.

Toronto is a really exciting city with so many things to do and the people who live here are really friendly. The staff in the school are very kind and the teachers are very patient and dedicated.

Natalia Camacho
from Colombia



accommodation

Homestay

Available across the Greater Toronto area.

- single rooms
- half-board (14 meals)
- full-board and breakfast

only options are also available on request

Residential

During the summer months a variety of university campus style residences are also available (see www.embassyces.com for details).

facilities

- WiFi-enabled
- IT suite
- interactive whiteboards
- student lounge
- university counselling

courses

- Certificate of Business English
- Certificate of English
- Exam Preparation: TOEFL, TOEIC
- International Internship
- Language Year Abroad
- Power Speaking Programme
- Work Placement



City Hall



the spectacular CN Tower



enjoy the beaches on Toronto Island



Toronto Island Park



the Maid of the Mist boatride at Niagara Falls

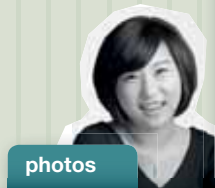




Melbourne

Melbourne is such a beautiful city with great architecture, parks and tourist attractions. There are people from so many different countries in the centre and all of the teachers and very nice and kind.

Ri Ra Choi from South Korea



photos



centre director
Margot Tucker



exterior



reception



classroom



IT suite

accommodation

Residence

A variety of accommodation is available at residences and lodges.

- single and shared rooms
- private and shared bath
- half-board and self-catering
- 24-hour security
- internet access
- TV, and student lounges

Homestay

Available across the Melbourne area.

- single rooms
- half-board (16 meals)

facilities

- WiFi-enabled
- IT suite
- interactive whiteboards
- student lounge
- activities
- university counselling
- work placement assistance seminars

courses

- Certificate of English
- English for Academic Purposes
- Exam preparation: FCE, IELTS (Core, Elective & Express)
- Language Year Abroad
- One-to-one lessons

sights

- 1 Melbourne Shopping Centre
- 2 State Library
- 3 Parliament House
- 4 Federation Square
- 5 Melbourne Aquarium
- 6 Eureka Tower
- 7 Crown Entertainment Complex



Enjoy the Penguin Parade experience on beautiful Phillip Island



Take a trip along the Great Ocean Road and view the outstanding natural beauty of the Twelve Apostles



cultural Melbourne



the beautiful Blue Mountains

Sydney is a great multicultural city - and the weather is also good! The centre is an excellent educational environment and I really like the teaching techniques. This will be helpful for my career as well as my future life.

Emanul Haque from Bangladesh



accommodation

Residential

Comfortable residential accommodation within walking distance of the city and Study Centre. All rooms have own fridge and sink. Facilities include a sun deck, BBQ area, shared kitchen and laundry room.

- minimum age 18
- single and twin rooms
- shared bathrooms
- self-catering

Homestay

Available across the Sydney area.

- single rooms
- half-board (16 meals)
- bed and breakfast option (minimum age 18)

Lodges

Single and shared self-catering accommodation (age 18+).

facilities

- WiFi-enabled
- IT suite
- interactive whiteboards
- student lounge
- activities
- university counselling
- work placement assistance seminars
- shared campus with Charles Sturt University, Martin College

courses

- Certificate of Business English
- Certificate of English
- English for Academic Purposes
- Exam preparation: FCE, CAE, IELTS (Core, Elective & Express)
- Language Year Abroad
- One-to-one lessons

photos



centre director
Carolyn Matthews



exterior



reception



student lounge



classroom



IT suite



Sydney's famous Opera House



sights

- 1 The Rocks
- 2 Sydney Opera House
- 3 Botanical Gardens
- 4 Sydney Tower
- 5 Darling Harbour - bars and restaurants
- 6 Queen Victoria Building - great shopping
- 7 Chinatown



Stunning scenery of the Blue Mountains



Enjoy a wine tasting trip to the Hunter Valley

the time of your life

home away from home

my Embassy life

teaching

success

courses

location
Melbourne | Sydney

Surfers Paradise

Study at our modern Study Centre on Queensland's fun-filled Gold Coast, and you'll be steps away from one of Australia's best beaches.



fantastic white-sand beaches



accommodation

Homestay

Available across the Gold Coast area.

- single rooms
- half-board (16 meals)
- bed and breakfast option (minimum age 18)

Residential

A variety of accommodation is available at lodges.

- minimum age 18
- single and shared rooms
- self-catering

facilities

- WiFi-enabled
- IT suite
- interactive whiteboards
- student lounge
- activities
- university counselling
- work placement assistance seminars
- shared campus with Martin College

courses

- Certificate of Business English
- Certificate of English
- Exam preparation: FCE, IELTS (Core & Elective)
- One-to-one lessons
- English Plus Surfing: Enjoy professional surfing lessons after class

sights

- 1 Dreamworld – an exciting theme park
- 2 Movie World
- 3 Sea World
- 4 Southport
- 5 Surfers Paradise
- 6 Q1 – spectacular views from the world's tallest residential tower.



Take a trip to Byron Bay – the most easterly point of Australia

photos



exterior



IT suite



classroom



centre director
Jason Seeto



student lounge



reception

Surfers Paradise is cool! The centre is right in the heart of the city, but is also by the beach and close to many national parks and attractions. The teachers here are very friendly and always happy to answer questions which is really important.

Nicolas Sigrist from Switzerland



Brisbane, a vibrant and cosmopolitan city



Brisbane

Our modern, purpose-built school is centrally located in sunny Brisbane, a friendly modern city with a tropical al fresco climate.

accommodation

Residential

Our residence is a 15-minute walk from the Study Centre, close to Southbank Parklands, public transport, cafés, museums and galleries. Facilities include dining room, lounge, courtyard and laundry room.

- minimum age 18
- single and twin rooms
- shared bathrooms
- half board: breakfast and dinner Monday to Friday

Homestay

Available across the Brisbane area.

- single rooms
- half-board (16 meals)
- bed and breakfast option (minimum age 18)

facilities

- WiFi-enabled
- IT suite
- interactive whiteboards
- student lounge
- activities
- university counselling
- work placement assistance seminars
- purpose-built campus
- shared campus with Martin College

courses

- Certificate of English
- Certificate of Business English
- English for Academic Purposes
- Language Year Abroad
- Exam preparation: FCE, TOEIC, IELTS (Core & Elective)
- One-to-one lessons

photos



centre director
Bradley Muller



exterior



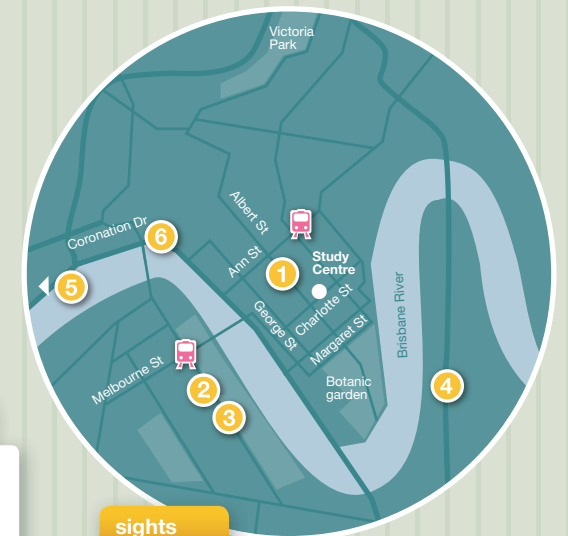
IT suite



classroom



student lounge



sights

- 1 Queen Street Mall
- 2 The Wheel of Brisbane
- 3 South Bank – visit the man-made beach
- 4 Kangaroo Point Cliffs
- 5 Mount Coot-tha
- 6 City Cat River Trip



Visit Fraser Island – outstanding natural beauty on the largest sand island in the world

Brisbane is a beautiful city with friendly people and really nice weather. I really like having classmates from many different countries and the teachers are very funny. The atmosphere in the school is really nice – it makes me feel alive!

Katya Caceres from Peru



embassyces.com

the time of your life

home away from home

my Embassy life

teaching

success

courses

location
Surfers Paradise | Brisbane



cricket on the beach at Mission Bay



Waitakere Ranges Regional Parks



sights

- 1 Sky Tower
- 2 University of Auckland
- 3 Auckland Museum
- 4 Piha Beach
- 5 Waiheke Island
- 6 Kelly Tarlton's Aquarium
- 7 Mission Bay

- Stunning mountain landscapes
- Skiing in Queenstown in the winter
- Misty rainforests and pristine golden beaches of Coromandel

Auckland

Our modern Study Centre is conveniently located in central Auckland very close to all the facilities and amenities this fantastic, vibrant, waterfront city has to offer.



sky jump! Auckland's unique adventure activity

accommodation

Homestay
Available across the Auckland area.
- single rooms
- half-board (16 meals)

Residential
A variety of accommodation is available at lodges.
- minimum age 18
- single and shared rooms
- self-catering

facilities

- WIFI-enabled
- IT suite
- interactive whiteboards
- student lounge
- activities
- university counselling
- library
- work placement assistance seminars
- shared campus with Taylors College

courses

- Certificate of English
- Exam preparation: FCE, IELTS (Elective)
- One-to-one lessons

I've made good friends, met amazing teachers and people from all over the world. I've really loved my time in Embassy Auckland and living in New Zealand – it's changed my life.

Fernando Gomes Rheda from Brazil



photos



exterior



IT suite



student lounge



centre director
Lindsay Spedding



classroom



exterior



experience Maori culture



view across the harbour to Auckland



fish and chips on Bastion Point



stunning landscapes

A summer to remember



Whether you want to stroll through a buzzing coastal city, surf some excellent waves, photograph stunning scenery or simply chill out in the sun: we have just the summer experience for you. Embassy Summer programmes are designed to make the most of their location so that you can get the summer experience you want.



These two weeks were really, really fun and I enjoyed every single moment of it. It was excellent and unforgettable.

Igor, Croatia

Programmes and locations

Embassy Summer has programmes and locations with something for everyone...

- Amazing facilities throughout all our locations.
- Fantastic locations throughout England, Scotland, Australia and the USA.
- Juniors and adults, groups and individuals.
- All levels catered for, from beginners to advanced.
- Accommodation in college residence or Homestay.
- Full and exciting activity programme.



embassyces.com/summer

EmbassyCES
Summer

Practical and enrolment information

Embassy support

Before you leave home we'll give you all the information you need about your travel, study and accommodation arrangements.

We'll meet you at the airport and take you to your accommodation (additional transfer fee).

We'll give you access to the Embassy handbook on your first day. It has all the information you need.

From your first day to your last, our student services teams will also give you any help you need.

We'll give you a telephone number to contact us in an emergency, 24 hours a day.

We'll help you sort out your return flights at the end of your course.

Paying

If you're enrolling through a local representative, please make payment to them. If enrolling directly, please pay by direct bank transfer or credit card to Embassy. All bookings are subject to our Terms and Conditions. You'll find details on the enrolment form and on embassyces.com.

StudyCare insurance (UK, USA Canada and New Zealand)

This is a comprehensive insurance plan specially created for international students. It will give you full protection from the day you travel. Full details are in the StudyCare insurance booklet, or online at embassyces.com/studycare

Overseas Student Health Cover (Australia)

As an international student on a student visa you are required to have Overseas Student Health Cover for the duration of your visa. It is important that your cover is maintained for the duration of your programme/s. Full list of prices available online at embassyces.com.

Confirming enrolment

We will confirm your enrolment by email, to you or your local representative.

To enrol with Embassy

Contact your nearest Embassy representative, enrol direct online at embassyces.com or complete an enrolment form and fax or mail it to us.

If you need anything answered which isn't in this brochure, please contact our International Admissions Centre in the relevant country. See back page for contact details.

Public holiday dates 2012

				NSW	QLD	VIC	
	UK	USA	CAN	AUS			NZ
January	2	2, 16	2	2, 26	2, 26	2, 26	2, 3, 30
February		20	20 T				
March						12	
April	6, 9		6	6, 9, 26	6, 9, 26	6, 9, 26	6, 9, 26
May	7	28	21		7		
June	4, 5			11	11	11	4
July		4	2				
August	27		6		15		
September		3	3				
October		8	8	1			29
November		22, 23	12 V			6	
December	25, 26	25	25, 26	25, 26	25, 26	25, 26	25, 26
School Christmas closure	17 Dec-1 Jan	25 Dec	24 Dec-1 Jan	24 Dec-1 Jan	24 Dec-1 Jan	24 Dec-1 Jan	17 Dec-2 Jan

T = Toronto only
V = Victoria only



Terms and Conditions

1. Payment of Fees

Full fees must be paid before visa documents are issued and no later than 14 days before arrival. Transfers and accommodation documents will be released once payment has been received in full. For all late payments made after the due date, a fee of 2% of the payment amount will be added.

2. Services

The company reserves the right to change details of its services, including courses, facilities and course dates, where circumstances beyond the company's control necessitate such changes or where the number of enrolments is not enough to operate a course viably.

3. Course Entry Levels

Most courses require minimum levels of English for entry. If after the placement test, a student is found to be below the minimum level required to start the course, the school reserves the right to place the student in a class with fewer lessons and/or and a different curriculum. Where this results in extending the duration of a student's course, Embassy CES may need to issue a new Certificate of Enrolment. Students may be transferred to the nearest centre running a lower level course.

4. Changes to Enrolments

The company reserves the right to charge an Administration Fee (GBP50; USD80; CAD80; AUD80; NZD90) each time course or accommodation details are changed or cancelled after a place has been confirmed. Additionally, when a change request for a previously confirmed accommodation is received less than 7 days in advance of the scheduled arrival date, an equivalent week's accommodation penalty fee will be charged. These fees will not apply to upgraded or extended courses.

5. Changes to Airport Transfers

Notification of change to airport transfers must be sent to our International Admissions Centre at least 2 full working days prior to the designated arrival time. If notice is not received the company cannot be held liable for operational errors, and an additional Administration Fee will apply.

6. Accommodation and Travel details

Students that have booked Embassy accommodation will receive details upon receipt of payment and travel information and no more than 14 days prior to arrival. If travel information is received less than 2 working days prior to the scheduled arrival date then the company may not be in a position to provide the transfer or accommodation service for the weekend of arrival.

7. Accident & Medical Insurance

Every student must have appropriate insurance and provide a document with the student's name and date of coverage as proof. The company recommends that all students take our own StudyCare insurance which is tailored to the needs of international students. Cover under the StudyCare insurance policy does not commence until the insurance fees have been paid in full. StudyCare is not available to students within Australia.

In the USA, Canada, the UK, and New Zealand, students not wishing to take StudyCare must present an equivalent insurance certificate on arrival. Students without insurance must take StudyCare.

In the USA, StudyCare is mandatory for students taking Business English in Action.

In New Zealand, having appropriate and current medical and travel insurance is compulsory for all international students. This is a requirement of the New Zealand Ministry of Education under the Code of Practice for the Pastoral Care of International Students, found on their website at www.minedu.govt.nz/goto/international.

a) Students without adequate insurance or sufficient evidence of insurance will have StudyCare Insurance added to their programme invoice.

b) Students may purchase international insurance from their home country as long as it covers the minimum prescribed insurance requirements as detailed in the Code of Practice. Students must provide the school with a translated copy for verification purposes prior to arrival.

c) Most international students are not entitled to publicly funded health services while in New Zealand. If a student receives medical treatment during a visit, they will be liable for the full costs of that treatment. Full details on entitlements to publicly funded health services are available through the Ministry of Health, and can be viewed on their website at www.moh.govt.nz.

d) The Accident Compensation Corporation (ACC) provides accident insurance for all New Zealand citizens, residents and temporary visitors to New Zealand, but a student may still be liable for all other medical and related costs. Further information can be viewed on the ACC website at www.acc.co.nz.

In Australia, it is compulsory for those on Student Visas to take Overseas Student Health Cover (OSHC) for the duration of the time they are in Australia. Students need to buy OSHC before coming to Australia, to cover them from when they arrive. This ensures they have adequate health care arrangements while studying in Australia. If the student chooses for Embassy to arrange OSHC for the first course/ year only of their programme, it is their responsibility to either extend or take out OSHC for the rest of their time in Australia. They must provide evidence of cover for the entire study period before a Confirmation of Enrolment will be issued.

8. General Refund Policy

All refunds will be sent to the account of the Embassy representative to whom the fees were originally paid, or to the individual from whom Embassy has received the original direct payment, except in New Zealand where the refund will be paid directly to the student.

If a student's visa application is rejected after payment has been received all fees, excluding any cancellation fees detailed in the Cancellation Policy below, will be refunded within 28 days, provided a visa refusal letter is received by our International Admissions Centre at least 2 working days before the course is due to start and the student has fulfilled all requirements for a visa application. No refund will be made if a visa rejection is based on student's failure to meet the necessary criteria for their chosen visa category.

Students in San Diego, Los Angeles and San Francisco must sign a California State Enrolment & Refund Agreement form. Refunds will be processed according to these terms and conditions.

Australia

In Australia this agreement, and the availability of complaints and appeals processes, does not remove the right of the student to take action under Australia's consumer protection laws. Refunds will be provided to students within 28 days if the student defaults and within 14 days if the school defaults.

In the unlikely event that the school is unable to deliver a course in full, the student will be offered a refund of all the course money paid to date. The refund will be paid within 14 days of the day on which the course ceased being provided. Alternatively, the student may be offered enrolment in a suitable alternative course by the school at no extra cost.

The student has the right to choose whether they would prefer a full refund of course fees, or to accept a place on another course. If they choose placement on another course, Embassy will ask them to sign a document to indicate acceptance of the placement.

If the school is unable to provide a refund or place the student on an alternative course our Tuition Assurance Scheme (TAS) provider will place them on a suitable alternative course at no extra cost. Finally, if the TAS provider cannot place the student in a suitable alternative course, the ESOS Assurance Fund Manager will attempt to place them on a suitable alternative course or, if this is not possible, the student will be eligible for a refund as calculated by the Fund Manager.

9. Cancellation Policy

Embassy defines cancellation as the period prior to start of first course. All cancellations must be made in writing to our International Admissions Centre and the following refund policies apply:

Enrolment Fee, Courier Fee, Accommodation Placement Fee, or Administration Fee will not be refunded for any student cancelling their course before arrival.

Tuition Refunds before Arrival UK, USA and Canada

Where cancellations are received in writing more than 14 days before the first course start date 100% of tuition fees will be refunded, but any courier fee, enrolment fee, UK Visa application fee (CAS) and added administration fees are non-refundable. Where cancellations are received in writing 14 days or less prior to the first course start date students will be charged GBP190 (UK), USD350 (USA) or CAD350 (Canada), in addition to the fees listed in this paragraph.

Australia

Students will be charged the Enrolment Fee plus 30% of tuition fees, as well as all other sundry fees if cancelling prior to the start of their course.

New Zealand

In New Zealand, students will be refunded tuition fees in full, less the Enrolment Fee.

Accommodation Refunds before Arrival

a) Students cancelling their accommodation less than 7 days before arrival will be charged an amount equal to 1 week of accommodation.

b) For cancellations less than 48 hours before arrival, an amount equivalent to 4 weeks of accommodation will be charged, or the full accommodation fee if the booking is less than 4 weeks in duration.

10. Withdrawal Policy

Embassy defines withdrawal as termination of a course after the first course has started. Any withdrawal must be made in writing to the centre director of the school where the student is studying.

Enrolment Fee, Courier Fee, Accommodation Placement Fee, and StudyCare or OHSC premium will not be refunded for any student terminating their course after arrival.

Tuition Refunds after Arrival

Written notification of withdrawal must be provided as a condition for making refunds. If a student breaches the visa conditions, no refund of the semester fees will be made.

USA

Refunds are calculated from the last date of attendance.

a) For courses of 4 weeks or less, no refund will apply.

b) For courses longer than 4 weeks, students who terminate in the first 4 weeks will be refunded all tuition fees except for 4 weeks calculated at the non-discounted (Certificate of English) rate.

c) For courses longer than 4 weeks, students who terminate after the first 4 weeks but before the midpoint of their course, Embassy will retain a pro-rated amount of tuition at the non-discounted (Certificate of English) rate.

d) For students who terminate after the midpoint, Embassy will retain all tuition fees.

UK, Canada and Australia

No tuition fees will be refunded to students who leave after the course has started. When a student has enrolled in multiple locations/courses, the course start date for the purpose of this clause is that of the initial Embassy course.

New Zealand

a) For courses of 1 to 34 days duration, if the student withdraws within the first 2 days of the course, they will receive 50% of the total fees paid. If they withdraw after the first 2 days, no refund is made.

b) For courses of 35 days to 3 months duration, if the student withdraws within the first 5 days of the course, they will receive 75% of the total fees paid. If they withdraw after the first 5 days, no refund is made.

c) For courses greater than 3 months, if written notice of termination is received by the end of the eighth day of the course, a termination fee of the lesser of NZD500 or 10% of tuition will apply. Students terminating after this period will not receive a refund.

Accommodation Refunds after Arrival

a) Students leaving their accommodation must give at least 4 weeks of notice in writing. After deducting the price of accommodation used, including the required notice period charged at the standard accommodation rate, accommodation fees in excess of the accommodation period will then be refunded, less the administration fee.

b) In Australia and New Zealand, a 10% withdrawal fee will be deducted from the balance.

11. Visas

Students should contact their local embassy, Consulate or High Commission to ensure they are allowed to enter and study in their chosen country. If a student does not possess or maintain a valid visa status in accordance with the visa conditions then their course will be terminated without refund.

For students wishing to study in the USA, Embassy is authorised under Federal Law to enrol non-immigrant students. By law, to issue the I-20 form, with the Enrolment Form, we must receive:

a) the student's home address

b) proof of sufficient funds to meet tuition and living expenses such as a current bank statement or a letter from your bank

c) a letter or notarised affidavit guaranteeing support from your parent or employer or sponsor,

No visa support documentation will be provided until all fees have been received.

12. Holidays

(Public and Language Year Abroad)

Schools will be closed on public holidays and no compensation is provided for missed days due to public holidays. All students in the USA and UK in Homestay accommodation over the Christmas and New Year 2 week period will be charged a seasonal supplement of GBP50 (UK) or USD100 (USA) per week. Dates for Language Year Abroad include the following vacation periods between terms:

2012: Mar 17th-Apr 1st, Jun 16th-Jun 24th, Sept 8th-Sept 23rd.

13. Resolution of Disputes

In the event of a dispute between an individual student and the school, procedures are in place to facilitate the resolution of the dispute. Any complaint should first be made to the student's Embassy Centre Director. Each complaint will be fully investigated provided that it is received within a month of the course ending and all fees have been paid. If the matter is not resolved, the student should complain in writing to the local Embassy Head Office (see back cover). In Australia, students may lodge an external appeal or complain about this decision through the Overseas Students Ombudsman. The Overseas Students Ombudsman offers a free and independent service for overseas students who have a complaint or want to lodge an external appeal about a decision made by their private education or training provider. See the Overseas Students Ombudsman website www.oso.gov.au or phone 1300 362 072 for more information.

14. Liability

Embassy and its staff and representatives will not be liable for loss, damage or injury to persons or property howsoever caused, except where liability is expressly imposed by law. Embassy will not be liable in the event that any service contracted to be supplied by Embassy becomes impossible to supply for any reason or any cause outside the control of Embassy.

15. Valid Prices

Prices are valid from 1 January 2012. Prices are subject to change without notice and will only be confirmed upon invoicing. For current prices please refer to embassy.com. Agents should refer to the Partners website: studygroup.com/partners.

16. Expulsion

Embassy reserves the right to expel or evict from accommodations arranged by Embassy any student whose conduct is unsatisfactory at the discretion of the centre director. In UK, USA, Canada and NZ that decision is final. No fees will be refunded in such cases and any unpaid fees become payable immediately. In Australia, a student has the right to appeal against such a decision and details of that process are available from the school. Students and their parents or guardians, where applicable, agree to pay the tuition fees and other charges applicable for the course on the due dates. It is understood and agreed that failure to do this may result in suspension from the programme and cancellation of the enrolment.

17. Promotional Activity

Students and their parents or guardians, where applicable, agree that the student's photo, quotes and details of achievements may be used for promotional purposes without written consent or notification.

18. Data Protection

Any information provided to Embassy may be held on computer and shall be used in accordance with its data protection registration and the national data protection laws applicable. Our Privacy Policy is available on the Embassy website.

19. Further Information: Australia

a) ESOS framework: The Australian Government wants overseas students in Australia to have a safe, enjoyable and rewarding place to study. Australia's laws promote quality education and consumer protection for overseas students. These laws are known as the ESOS Framework and they include the Education Services for Overseas Students (ESOS) Act 2000 and the National Code. Visit the website http://aei.gov.au/AEI/ESOS/QuickInfo/ESOS_FrameWork_pdf.pdf for details. A student who has concerns about any of these matters after arrival at Embassy, should contact the Centre Director.

b) Information provided may be made available to Commonwealth and State agencies and the Fund Manager of the ESOS Assurance Fund, as part of our obligations under the ESOS Act 2000 and the National Code.

c) Each student must notify the campus of any change in their contact details or address while enrolled in the course.

d) All courses offering fewer than 24 lessons (20 hours) per week are not available to student visa holders.

e) Provider Name: Study Group Australia Pty Limited CRICOS Provider Codes: 01682E (NSW); 01755D (QLD); 03079G (VIC); 01963G (WA) Provider Name: Taylors Institute of Advanced Studies Ltd, CRICOS Provider Codes: 01160J (VIC)

f) Any school-aged dependants accompanying overseas students to Australia will be required to pay full fees if they are enrolled in either a government or non-government school.

g) Students studying in Queensland who are concerned about the conduct of a provider may contact officers of the Queensland Department of Education; the Chief Executive of that Department has power under the Education (Overseas Students) Act to suspend or cancel the registration of a provider or a course within that state.

h) Average living expenses

Sydney and Melbourne: AUD18,000 per year

New Zealand: NZD10,000 - NZD12,000 per year

Brisbane and Surfers Paradise: AUD14,000 per year

20. Further Information: New Zealand

a) Protection of Student Fees: Fees paid by students will be fully protected by a Bank Guarantee and cash held by an independent Trustee. In the unlikely event of the school closing prior to the conclusion of courses, school fees will be refunded on a pro-rata basis by the Trustee.

b) If students experience difficulty with procedures in New Zealand, they may contact the Qualifications Authority at PO Box 160, Wellington. Telephone +64 4 802 3000.

c) Code of Practice: Embassy has agreed to observe and be bound by the Code of Practice for the Pastoral Care of International Students published by the Minister of Education. Copies of the Code are available on request from this institution or from the New Zealand Ministry of Education website www.minedu.govt.nz. The Code of Practice also establishes that International Educational Appeal Authority (IEAA) and the Review Panel receive and adjudicate on student complaints. Their email address is: info.ieaa@inedu.govt.nz.

d) Immigration: Full details of visa and permit requirements, advice on rights to employment in New Zealand while studying, and reporting requirements are available through the New Zealand Immigration Service, and can be viewed on their website at immigration.govt.nz.

e) Each student must notify the school of any change to their contact details, accommodation type, and residential address.

21. Further information: USA

For students travelling as unaccompanied minors on flights to and from the USA, a one-way USD200 unaccompanied minor airport service fee will be charged. Pocket money requests will incur a processing charge of USD80.

22. Further information: UK

Embassy Schools are registered with the UKBA Register of Sponsors, and their Sponsor Licence Numbers are as follows;

Brighton: B702QNNG1, Cambridge: 8V1P5MAW1 Hastings: 5EGJXG2B9, London: A9P6TFYGX, Oxford: 2GXTF1G72

Pocket money requests will incur a processing charge of GBP50.

23. Force Majeure

Embassy is not liable in the event where it is unable to fulfil any service to which it is contractually bound because of fire, natural disaster, acts of government, failure of suppliers or subcontractors, labour disputes or other reasons which are outside its control.

24. Agents

All the above terms are applicable to direct students and agents unless variations are expressly agreed between the agent and Embassy or their parent company, Study Group, in writing.



Quality education worldwide

Embassy is part of Study Group which is a quality global education provider that invests in international students' futures and enhances their prospects by focusing as much on the way they learn as the qualifications they achieve.

Study Group provides:

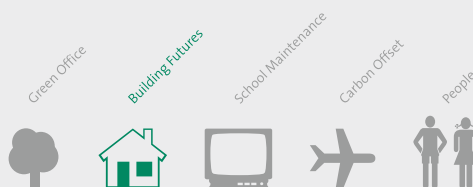
- > Higher Education
- > English Language
- > Career Education

Study Group Social Responsibility: be a part of it

As a global education provider Study Group seeks to make a difference by funding the construction of schools in disadvantaged communities. Through our charitable initiative Building Futures, Study Group works to identify those communities where the building of a school will contribute to the preservation of the social structure for future generations.

Study Group also recognises its responsibility towards protection of the environment and fosters among its staff, suppliers, customers, shareholders and local communities an understanding of environmental issues in the context of its business. Our collective task is to ensure that we continually improve the environmental impact of our global activities.

studygroup.com

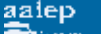


United Kingdom – Student Enrolment Advisers
1 Billinton Way, Brighton BN1 4LF, United Kingdom
T +44 1273 339 400 F +44 1273 339 398
embassyces.com



Winner

Chain School 2007 2009 2010
Innovation of the Year 2008



Printed using environmentally friendly products. Please recycle after use.

12390.08.11