

JUNIOR SUMMER CAMPS 2010



Great Places



Junior Camps
in the
UK and USA

Great Activities

For students
aged 8-18 from
all over the world

Improve your English language
skills and enjoy a varied and
exciting activity programme.



Great Teachers



Great Friends



San Francisco Common Room



Fun Social Programme

London Kingston Canteen

About Us...

Founded in 1955, St Giles is one of the longest established and most successful English language training organisations, and has grown to 7 year round centres and 7 summer camps in the UK, the USA, Canada, and Brazil.

Every year, nearly 10,000 students from almost 100 different countries choose St Giles for their language learning needs.

Wherever you choose to study with St Giles, you can expect only the highest standards based on our reputation for excellence in English language training, our many years' experience and our commitment to delivering the highest quality.

Our Courses

St Giles offers a choice of high quality residential centres in the UK and USA, selected for their excellent facilities and secure environments. Caring for children and young adults means we need to think of everything and we offer a complete package programme for our students. This includes:

- 20 lessons (16.7 hours) of English language tuition per week
- All meals, with a healthy and varied menu

- 24 hour care, supervision, and support
- 1 full-day and 1 half-day excursion per week
- A daytime and evening programme of social activities, sports, local visits, and sightseeing
- Residential accommodation in a single or shared room (see centre information for details)
- Airport transfers (supplements apply)
- All textbooks and course materials
- Leaving Certificate

St Giles staff are resident in all of our centres throughout the programme.

Activities & Sightseeing Excursions

Our programmes are packed with excursions, visits, sports, and games and are designed to have something for everyone. We include a full programme of daytime and evening activities, and at least 1 full-day and 1 half-day sightseeing excursion each week.

SAMPLE PROGRAMME: from St Giles Kingston 2009*

	MORNING	AFTERNOON	EVENING
Sunday	<i>New Students</i> Arrival at centre, room allocation, orientation of campus and Kingston town centre <i>Existing Students</i> Day out in London or Wimbledon		Games evening
Monday	Lessons or Level Testing	Sports afternoon or Richmond Park	Cinema night
Tuesday	Lessons	Half-day excursion to Windsor or Hampton Court	Tenpin bowling
Wednesday	Lessons	Kingston Town Centre – choose from shopping, historic walk or scavenger hunt	Karaoke or Disco
Thursday	Full day excursion to Bath, Bournemouth or London		Free evening
Friday	Lessons	Games afternoon or Thames boat trip	St Giles Kingston Talent Show
Saturday	Lessons	Museum visits	Quiz night and leaving party

* Classes normally take place in the mornings (0900 to 1300). During busier weeks classes and social/activity programme may alternate between mornings and afternoons.

Welcome to St Giles International

- Excellent levels of care and supervision, 24 hours a day
- Choice of centres in the UK and the USA
- A nationality mix ensuring a truly international experience
- Fully residential programmes on attractive boarding school and university campuses
- Fast-paced and exciting lessons taught by professional teachers, designed for the needs of children and young adults
- An action-packed, varied, educational and fun social and cultural programme

Accommodation

All accommodation at a St Giles Junior Summer Camp is residential on a boarding school or university campus. Students have a choice of single or shared rooms (see centre information for details). Our residences are modern, safe and offer a range of facilities. Students are always campus-based, alongside our residential staff and Centre Managers.

LANGUAGE PROGRAMMES:

FACT FILE

Max per class: 15 students
12 (Canterbury)

No. of lessons: 20 lessons

Lesson length: 50 minutes

Levels: 6 levels, from Beginner to Advanced

What's included: All textbooks and materials; regular progress tests and 1:1 tutorials with your teacher; Certificate of Study

All lessons are taught by energetic and qualified teachers who understand the needs of younger learners. Lessons are fast paced, exciting and contemporary, and are designed to focus on building communication skills and confidence in using English. We include progress tests and an individual tutorial every two weeks to ensure maximum progress and lots of personal attention. All lessons are taught in multi-national groups.



NEW for 2010

The King's School, Canterbury

11th July – 15th August 2010

- Set in the grounds of world-famous Canterbury Cathedral
- A safe, secure campus ideal for younger learners
- World class sporting and educational facilities
- Maximum 12 per class, with high levels of supervision and care

One of the world's oldest Public Schools, our King's School campus is located in the secure precincts of the world famous Canterbury Cathedral, in the centre of the ancient city of Canterbury. The School's sports facilities – including swimming pool, gym, playing fields – are just a short walk from the residences and world class teaching facilities, while the medieval College buildings make for a magical experience. A safe, self-contained campus, with a smaller capacity means that this is ideal for younger learners or those going abroad for the first time.

Activity Programme

- One full day and one half-day excursion per week
- Full day excursions include London Sightseeing, Cambridge, Stonehenge, Brighton
- Half-day excursions include Windsor Castle, historic Hastings and Dover, Leeds Castle
- Full afternoon and evening activity programme is organised; including a choice of sports (swimming, table tennis, basketball, volleyball, football) as well as other activities including movie nights, drum workshops, karaoke night, student discos, bowling and many more.

Canterbury £775 per week

Return Airport Transfers

Number of students:	1-4	5-11	12+
Heathrow	£115	£45	Free
Gatwick	£115	£45	Free
Stansted	£133	£50	£20
Luton	£155	£58	£20

To liaise with Airline Unaccompanied Minor Service on arrival and departure: £64

KEY FEATURES

Age Range: *8-10
10-17

Capacity: 130

Residence: Single or Shared Study Bedrooms

Distance from nearest airport: 110km, Gatwick
123km, London Heathrow

Facilities:

Comfortable lounges with TVs in residences

Indoor sports hall

Indoor swimming pool and rock climbing

Outdoor playing fields and tennis courts

Modern classroom facilities, including SMART boards

LAN internet connection in residences

Classical Dining Hall

* as part of a group



Accredited by the
BRITISH COUNCIL



Canterbury Campus



Canterbury Residence



Kingston Study Bedroom



London Kingston

4th July – 15th August 2010

- Excellent access to London's attractions
- Ideal for more independent students looking for the London experience
- Fashionable, affluent, London suburb located on the River Thames

Our London Kingston Summer Camp is based in Kingston-upon-Thames, a busy riverside town on the borders of London and Surrey. Truly the best of all worlds, our London Kingston campus offers instant access to the attractions of Britain's capital, whilst also being close to beautiful countryside such as Richmond Park, Kew Gardens and Hampton Court. A relaxed and friendly atmosphere in a riverside setting, our London Kingston campus is ideal for students looking for the London experience in a supervised yet more independent environment.

Activity Programme

- One full day and one half-day excursion per week
- Full-day excursions include Oxford, Bournemouth, London Sightseeing, Stonehenge and Brighton
- Half-day excursions include trips in and around London such as Hampton Court Palace and a Thames River Cruise
- Full afternoon and evening activity programme organised; including visits to London attractions, discos, talent shows, film nights, cinema, bowling, Kingston shopping and sports.

London Kingston £655 per week

Return Airport Transfers

No of Students:	1-4	5-11	12 +
Heathrow	£80	£30	Free
Gatwick	£115	£45	Free
Stansted	£155	£58	Free
Luton	£133	£50	Free

To liaise with Airline Unaccompanied Minor Service on arrival and departure: £64

KEY FEATURES

Age Range: 14-18

Capacity: 140

Residence:
Single Study Bedrooms

Distance from nearest airport:
17km, London Heathrow

Facilities:

LAN internet connection in rooms

Student lounges

Playing fields

Tennis courts

Modern classrooms

Dining room



Accredited by the
BRITISH COUNCIL



Room



Kingston Campus



Kingston Class



Nottingham

27th June – 8th August 2010

- All meals, accommodation and teaching in one building
- Safe, secure and self-contained campus ideal for younger learners
- Warm, friendly atmosphere; lots of personal attention
- Set in beautiful parkland on modern university campus, including large swimming pool

Located in 330 acres of sculptured parkland at the University of Nottingham campus, our centre at Nottingham offers a warm and homely feel. The home of Robin Hood, Nottingham is ideally located for a unique experience with trips to Manchester, York, Cambridge and the famous Peak District. High levels of supervision, care and attention make this an ideal campus for younger learners or those going abroad for the first time.

Activity Programme

- One full day and one half-day excursion per week
- Full-day excursions include London, Cambridge, York, Warwick Castle and Manchester
- Half-day excursions include Sherwood Forest, Matlock Heights and Belvoir Castle
- Full afternoon and evening activity programme organised; including a choice of sports (e.g. football, swimming volleyball) and other activities for example discos, bowling, ice skating, cinema and film nights.

Nottingham £625 per week

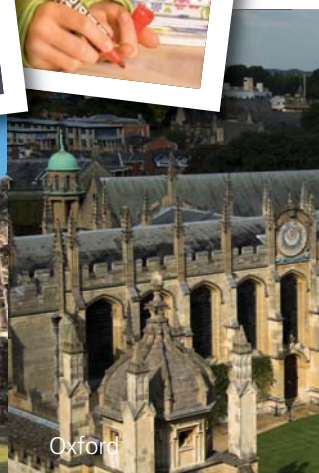
Return Airport Transfers

No of Students:	1-4	5-11	12 +
Heathrow	£133	£50	Free
Gatwick	£180	£75	£20
Stansted	£133	£50	Free
Luton	£115	£45	Free
East Midlands	£45	£20	Free

To liaise with Airline Unaccompanied Minor Service on arrival and departure: £64

KEY FEATURES

Age Range:	10-13 14-17
Capacity:	150
Residence:	Single or Twin Study Bedrooms
Distance from nearest airport:	22km, East Midlands Airport
Facilities:	LAN internet connection in rooms Student lounge Refrigerator in each room Dining room Swimming pool Playing fields Tennis courts Events room





Oxford

27th June – 8th August 2010

- High quality single en-suite rooms
- Within walking distance of the heart of Oxford
- Set in beautiful parkland, with modern teaching and leisure facilities
- The classical Oxford Experience

St Giles Oxford is based at Oxford Brookes University, Headington Hill Campus, making this an ideal choice for students looking for the classical Oxford experience.

Located a short walk from the Oxford town centre, the campus is held to be one of the UK's leading modern campuses, offering the highest standards of accommodation, leisure and teaching facilities.

This is a safe, self-contained and leafy campus, with plenty of green outdoor space to relax and enjoy our social programme. The modern teaching, student houses, and leisure/dining facilities are all within easy walking distance of each other.

Activity Programme

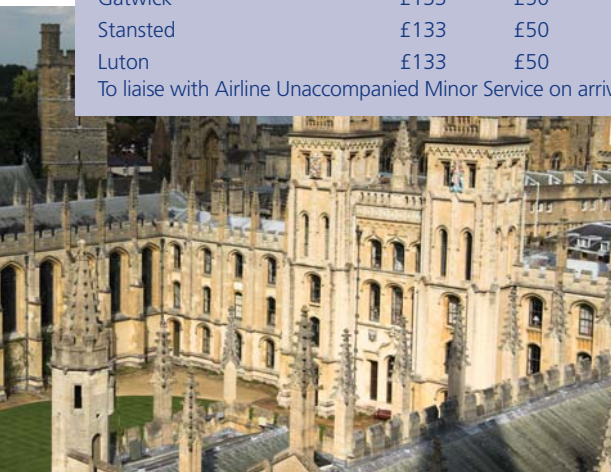
- One full day and one half-day excursion per week
- Full day excursions include London Sightseeing, Cambridge, Bath, Shakespeare's Stratford-upon-Avon, Bournemouth
- Half-day excursions include Windsor, Blenheim Palace, and Oxford Colleges and Museums
- Full afternoon and evening activity programme is organised, including a choice of sports (swimming, basketball, volleyball, football) as well as other activities including movie nights, karaoke night, student discos, bowling, talent shows and many more.

KEY FEATURES

Age Range:	14-18
Capacity:	170
Residence:	Single En-suite Study Bedrooms
Distance from nearest airport:	75km, London Heathrow
Facilities:	En-suite single rooms Communal areas in residences Indoor sports hall Outdoor playing fields Vending machines Shops & cafes Modern classroom facilities Lecture theatre for film nights Modern dining room



Oxford	£765 per week		
Return Airport Transfers			
Number of students:	1-4	5-11	12+
Heathrow	£115	£45	Free
Gatwick	£133	£50	Free
Stansted	£133	£50	Free
Luton	£133	£50	Free
To liaise with Airline Unaccompanied Minor Service on arrival and departure: £64			



Oxford Residence



Southampton

4th July – 8th August 2010

- High quality, en-suite single room accommodation
- Vibrant and thriving city centre location
- Close to London and South Coast attractions

Our Southampton Summer Camp is located on the city-centre campus of Southampton Solent University. A vibrant, lively and growing modern city, Southampton has a rich historical and cultural heritage although remains one of the UK's greenest cities. With one of Britain's largest and most exciting shopping centres, an exciting waterfront setting, Southampton is also a perfect base to see London and South Coast attractions. With a lively, action-packed programme, on a modern campus, our Southampton campus is ideal for students looking for the city experience.

Activity Programme

- One full day and one half-day excursion per week
- Full-day excursions include London, Oxford, Brighton, Bath and the Isle of Wight
- Half-day excursions include Winchester, The New Forest, Bournemouth and Stonehenge
- Full afternoon and evening activity programme organised; including a variety of sports (e.g. football, volleyball and swimming) and other activities for example cinema, bowling, shopping, drum workshops and visits to local sites of interest.

Southampton £625 per week

Return Airport Transfers

Number of students:	1-4	5-11	12+
Heathrow	£115	£45	Free
Gatwick	£133	£50	Free
Stansted	£155	£58	£20
Luton	£133	£50	Free
Southampton	£45	£20	Free

To liaise with Airline Unaccompanied Minor Service on arrival and departure: £64

KEY FEATURES

Age Range: 12-17

Capacity: 250

Residence:
Single En-Suite Bedrooms

Distance from nearest airport:
9 km, Southampton Airport
110km, London Heathrow

Facilities:

En-suite single rooms

Student lounge

Indoor theatre

Playing fields

Student Union

Dining room



Accredited by the
BRITISH COUNCIL



Southampton Canteen



Southampton Residence



Modern teaching



NEW for 2010

New York

27th June – 8th August 2010

- High quality single and shared rooms in newly built residence
- Set in a beautiful suburban university campus, within easy reach of Manhattan
- Ideal for more independent learners looking for the New York City experience

St Giles New York is based on the Queen's College Campus of the City University of New York. Located on a tree-lined, 77-acre campus with grassy open spaces, Queens College has a traditional quad and a spectacular view of the Manhattan skyline, which is only 30 minutes away. Top class sporting and recreational facilities are available on campus, including indoor sports hall, athletic tracks and swimming pool, along with a range of modern cafes, outdoor dining, and attractive communal recreational areas.

While learning takes place on a relaxed and safe campus setting, our New York centre is ideal for students looking to explore the 'Big Apple' and enjoy one of the world's greatest cities.

Activity Programme

- One full day and one half-day excursion per week
- Full day excursions include visits to the Statue of Liberty & Ellis Island, American Natural History Museum, Times Square and Broadway, Lincoln Centre theatre performance, and more
- Half-day excursions include visits to the Rockefeller Centre, Radio City Music Hall, Central Park and 5th Avenue, the Empire State Building, a NY Baseball Game and more
- Full afternoon and evening activity programme is available, including a choice of sports (swimming, table tennis, basketball, volleyball, football) as well as other activities including movie nights, Las Vegas Night, shopping, karaoke night, student discos, bowling, cycling and much more.

KEY FEATURES

Age Range:	14-17
Capacity	120
Residence:	Single and Twin Study Bedrooms
Distance from nearest airport:	
JFK	18 km
La Guardia	6.5 km

Facilities:

- Wireless internet access
- Student lounges in residences
- Indoor Sports Hall and gym
- Outdoor playing fields
- Tennis Courts
- Swimming Pool
- Shops, restaurants & cafes
- Indoor theatre
- Interactive whiteboards

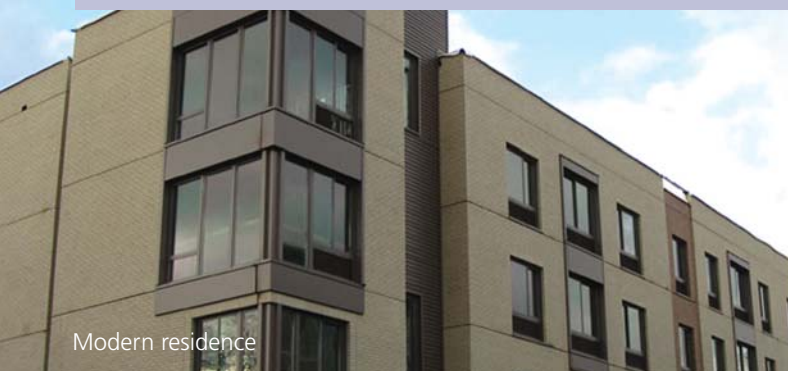


New York

\$1295 per week

Return Airport Transfers

Number of students:	1	2	3
JFK International Airport	\$148	\$86	\$58
La Guardia	\$138	\$86	\$58
Newark	\$158	\$96	\$68



Modern residence



Students relaxing



San Francisco Bay Area

4th July – 15th August 2010

- Modern university campus offering high accommodation standards
- Fun, varied and exciting activity programme
- Excellent educational and sporting facilities, including a large swimming pool
- Self-contained campus, meaning lots of support, care and supervision

Located on the campus of California State East Bay University, our San Francisco Summer Camp offers the combination of vibrant Californian life and a safe and secure campus located 40km from the city centre. Situated in the scenic Hayward Hills and overlooking San Francisco Bay, this is a relaxed, fun and caring summer camp experience. We offer excellent facilities, high standards of accommodation, and easy access to downtown San Francisco.

Activity Programme

- One full day and one half-day excursion per week
- Full-day excursions include Santa Cruz Beach Boardwalk, Monterey Aquarium, Great America Amusement Park and full day tours of San Francisco
- Half-day excursions include Alcatraz Prison, Pier 39 (shopping and entertainment), the historic cable cars and cycling on the Golden Gate Bridge
- Full afternoon and evening activity programme organised; including a variety of sports (e.g. football, volleyball) and activities such as movies, stargazing, karaoke, Vegas night and bowling.



KEY FEATURES

Age Range:	10-13 14-17
Capacity:	170
Residence:	Twin Study Bedrooms
Distance from nearest airport:	40km, San Francisco International Airport
Facilities:	LAN internet connection in rooms Student lounges Vending machines Food court Shops & cafes Playing fields Swimming pool Gym

San Francisco \$1185 per week

Return Airport Transfers

Number of students:	1	2	3
San Francisco	\$187	\$125	\$98



San Francisco Bay Area Campus



San Francisco Students



Students Relaxing



Football in Southampton



Canterbury Study Bedrooms



Boating in Canterbury

JUNIOR SUMMER CAMPS 2010



St Giles Canterbury, UK



St Giles London Kingston, UK



St Giles Nottingham, UK



St Giles Oxford, UK



St Giles New York, USA



St Giles San Francisco, USA



St Giles Southampton, UK

UK courses are a joint venture between St Giles International and the Anglo European School of English, Bournemouth.

Contact us:

UK: St Giles International | 154 Southampton Row | London | WC1B 5JX |

T: +44 (0) 20 7837 0404 | F: +44 (0) 20 7278 5458

E: juniorcamps@stgiles.co.uk

Anglo European School of English | 77 Lansdowne Road | Bournemouth | Dorset | BH1 1RW |

T: +44 (0) 1202 558 658 | F: +44 (0) 1202 552 849

E: info@anglo-european.org

USA: St Giles San Francisco | 785 Market Street | Suite 300 | San Francisco | CA 94103 |

T: +1 415 788 3552 | F: +1 415 788 1923

E: english@stgiles-usa.com



www.stgiles-international.com

EXCELLENCE IN ENGLISH LANGUAGE TRAINING SINCE 1955