



# an English summer

“ It’s excellent. The organization is good and the activities are different every day. ”

Erbacher Laure from France



Welcome to the MW Summer School. Here you will enjoy improving your English while learning a choice of sports and activities. These will be professionally organized to create your perfect summer holiday.

Our summer schools are set in some of the most beautiful countryside in England, and yet still within one and a half hours of London and its international airports. Our courses are led by experienced staff who will encourage and motivate you to develop your sporting and English language skills.

You can book courses from two weeks up to six weeks to create your ideal summer holiday – one you will remember all your life.

If you are aged 7-17\*, enjoy learning and have a spirit of adventure and discovery, then the MW Summer School is the place to be this summer.

\* Recommended age range: 7-15 Kingham Hill, 11-17 Warminster

# contents

The Summer Schools	4
Your teachers and instructors	8
Meals and accommodation	10

---

 Summer Multi-sports	12
 Summer Tennis	14
 Summer Football	16
 Summer Art and Design	18
 Summer Dance	20
 Summer Golf	22
 Summer Sailing	24
 Summer Horse Riding	26
 Summer Study	28
 Summer Intensive	30

---

Excursions	32
Making a booking	34





# Warmminster

Founded in 1707, Warmminster is one of the leading independent boarding schools in the South West of England. The school has been providing a quality learning environment for 300 years.

The excellent on-site facilities include modern classrooms, a large sports hall and squash courts, astro-turf and hard surface tennis courts, a lovely outdoor heated swimming pool, a relaxing art room and several sports pitches.

Meals take place in the spacious dining room and students are housed amongst six renovated boarding houses.

The school itself is located just on the edge of the historic town of Warmminster in Wiltshire. Warmminster School's magnificent setting in 50 acres of grounds provides the perfect location for sports and outdoor pursuits of all kinds.



The Summer Schools





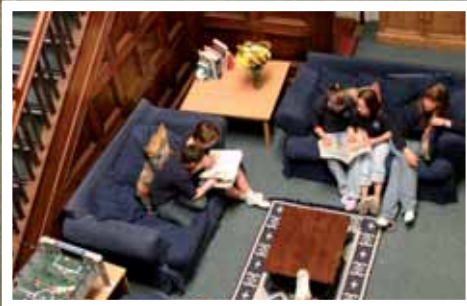
# Kingham Hill

Kingham Hill School is located in the heart of the Cotswolds and was purpose built as a boarding school in 1886. It has since become a popular and well-established independent school providing outstanding sports and teaching facilities

The school itself is a magical old traditional English boarding school combining a mixture of old architecture and modern facilities. Its superb on-site sports facilities include a state-of-the-art dance studio, modern indoor swimming pool, school gymnasium, several tennis courts and extensive playing fields for outdoor sports.

In total there are seven boarding houses on site, each very different in character and size. All students share meals in the spacious school dining room.

The school itself is located within a very safe and closed campus, close to the town of Chipping Norton. It is within easy reach of the city of Oxford and Shakespeare's home town of Stratford Upon Avon and is the perfect setting for those students wishing to get away from it all and get involved in the many sports and academic courses we have to offer.



The Summer Schools 



# inspirational teaching



It's holiday time! Perhaps the best time for learning or improving your English. The course leaders – all highly qualified teachers or instructors – work with the summer school staff to provide a vacation language course of a superior quality. The success of the courses is based upon the professionalism and commitment of the teaching team. Of course it's fun, informal and friendly but all of the lessons are designed to be purposeful and productive.

Outside the classroom, whether your choice is multi-sports, tennis, dance, golf, sailing, horse riding, art and design, intensive or study, you'll benefit from the same high teaching standards.

We pack a lot into our summer programmes. Fifteen hours of English language tuition each week will really help you

develop your language skills. English lessons involve speaking, listening, reading and writing in small, lively classes – no more than 12 in a group. We know from experience that you will learn quickly in this stimulating atmosphere. At the end of the course, you will receive a certificate indicating the degree of progress you have made which you can take home and show to your friends and family.

The programme of professional instruction and activities includes two full day 'heritage' excursions and an additional half day educational visit to a local attraction each week. Evenings are for barbecues, discos and socializing with your new friends – a great way to practise your English.

# Your teachers and instructors





feeling at  
home



Stop! Amongst all the activity of the MW Summer School the human body must be fed and rested!

From the time you wake up at 7am (well there is a lot to do!) you will enjoy excellent English and international cuisine: a full English or continental breakfast, a hot and cold buffet lunch and a three-course dinner. There is at least one outdoor barbeque each week and snacks three times each day.

Falling asleep is the easiest task of the day! For students who are over 13 years of age, accommodation is mostly rooms with either two or three beds, and younger students have dormitories. Some single rooms are available for the older students on site. All rooms share bathroom facilities.

Our qualified Accommodation & Welfare Manager will look after your health and happiness and is always on call if you need them. Each student also benefits from their own guardian, who is a member of the MW Summer School staff. The guardian will be housed near you and will be on hand for additional help should you need it.

# Meals and accommodation



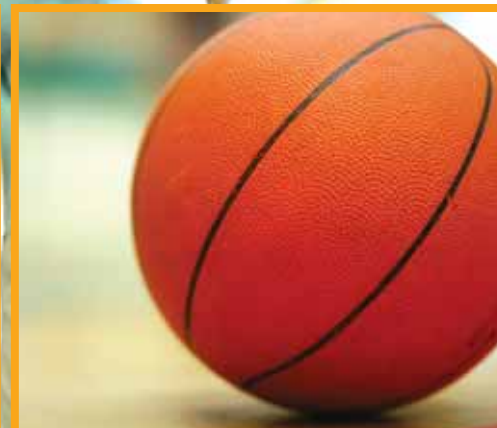
# let's go!



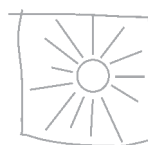
Our Summer Multi-sports course combines 15 hours of English lessons every week with four afternoons of multi-sports. Facilities on-site include: an indoor or outdoor heated swimming pool, tennis courts, playing fields and a fantastic indoor sports hall, giving you plenty of sports and activities to choose from.

Each afternoon you'll be offered three different activity sessions selected from a range of options including: football, tennis, basketball, uni-hoc, arts and crafts, badminton, volleyball and swimming amongst others. This all adds up to a fun-packed and varied holiday that you will remember forever.

SAMPLE PROGRAMME	Monday	Tuesday	Wednesday	Thursday	Friday	Saturday	Sunday
Morning 9.00-10.00	Placement test new students	English	English	English	English	Excursion to London, Oxford, Windsor	Arrival day for new students
10.00-11.00	Communication and fluency	Communication and fluency	Communication and fluency	Communication and fluency	Communication and fluency		Excursion to London, Longleat, Thorpe Park
11.00-11.30	Break	Break	Break	Break	Break		
11.30-12.30	English	English	English	English	English		
Lunch							
Afternoon	Tennis, arts, basketball	Volleyball, swimming, football	Excursion: Cheddar Gorge	Swimming, arts, Uni-hoc	Badminton, football, table tennis		
Dinner							
Evening	Video, volleyball, inflatables	Cabaret, swimming	Barbecue party, sports hall	Pop quiz, cinema trip	Blind date, bowling	Disco	Karaoke party



Summer Multi-sports



# fifteen love



Anyone for tennis? if you want to improve your English and your tennis, then Summer Tennis is for you. With coaching from full-time tennis professionals, you'll get plenty of practice and encouragement which will help you to improve your skills. The tennis course takes place on the astro-turf tennis courts, based at the school.

Start with three hours of English language classes every morning, followed with four afternoons per week of professional tennis tuition (full two-hour sessions). At the end of the afternoon, you can relax in the swimming pool, join your friends in activities or practise what you have learned in a few tennis matches.

SAMPLE PROGRAMME	Monday	Tuesday	Wednesday	Thursday	Friday	Saturday	Sunday
Morning 9.00-10.00	Placement test new students	English	English	English	English	Excursion to London, Oxford, Portsmouth	Arrival day for new students  Excursion to London, Chessington, Hampton Court
10.00-11.00	Communication and fluency	Communication and fluency	Communication and fluency	Communication and fluency	Communication and fluency		
11.00-11.30	Break	Break	Break	Break	Break		
11.30-12.30	English	English	English	English	English		
Lunch							
Afternoon	Basic warm ups, levels assessment	Group coaching, stroke play	Excursion: Longleat Safari Park	Singles, tactics, serves	Match practice		
16.30-17.30	Multi-sports	Multi-sports		Multi-sports	Multi-sports		
Dinner							
Evening	Video, volleyball, inflatables	Cabaret, swimming	Barbecue party, sports hall	Pop quiz, cinema trip	Blind date, bowling	Disco	Karaoke party



Summer Tennis



# goal!



If you wish to improve your football skills as well as your English language then our Summer Football course is exactly what you need! The course will combine 15 hours of English language tuition each morning in multinational classes, followed by four afternoons of football coaching each week, in two hour sessions.

The football course will be taught by professional football coaches and will include the various skills required to improve your game, as well as football matches with the other participants to practice what you have learned.

At the end of the two hours you can choose to continue playing football, or join other friends on an alternative activity for the last hour of the afternoon.

SAMPLE PROGRAMME	Monday	Tuesday	Wednesday	Thursday	Friday	Saturday	Sunday
Morning 9.00-10.00	Placement test new students	English	English	English	English	Excursion to London, Cambridge	Arrival day for new students  Excursion to London, Chessington, Hampton Court
10.00-11.00	Communication and fluency	Communication and fluency	Communication and fluency	Communication and fluency	Communication and fluency		
11.00-11.30	Break	Break	Break	Break	Break		
11.30-12.30	English	English	English	English	English		
Lunch							
Afternoon	Levels assessment/ football coaching	Group coaching, skills practice	Excursion: Stradford Upon Avon	Five a side match practice and shooting skills	Football coaching		
16.30-17.30	Multi-sports	Multi-sports		Multi-sports	Multi-sports		
Dinner							
Evening	Video, volleyball, inflatables	Cabaret, swimming	Barbecue party, sports hall	Pop quiz, cinema trip	Blind date, bowling	Disco	Karaoke party



Summer Football



# express yourself



The main focus of the Summer Art and Design course is to express yourself through different media, using a series of separate studies to develop your artistic talents.

After your English lessons in the morning you will spend three hours (four afternoons each week) developing your art projects and building up a portfolio of work.

All materials will be supplied, including a sketch book which you will take home with you.

Discussions on art, together with a visit to local galleries can complement the practical work. Your sketch book will be used to make studies from paintings in the galleries as well as to record the journey and other events of the week.

SAMPLE PROGRAMME	Monday	Tuesday	Wednesday	Thursday	Friday	Saturday	Sunday
Morning 9.00-10.00	Placement test new students	English	English	English	English	Excursion to London, Oxford, Bath	Arrival day for new students
10.00-11.00	Communication and fluency	Communication and fluency	Communication and fluency	Communication and fluency	Communication and fluency		Excursion to London, Chessington Thorpe Park
11.00-11.30	Break	Break	Break	Break	Break		
11.30-12.30	English	English	English	English	English		
Lunch							
Afternoon	Preparatory studies for painting	Still life, painting	Excursion: Salisbury	Colour studies seminar	Final seminar and exhibition of work		
Dinner							
Evening	Video, volleyball, inflatables	Cabaret, swimming	Barbecue party, sports hall	Pop quiz, cinema trip	Blind date, bowling	Disco	Karaoke party



Summer Art and Design



# let's dance!



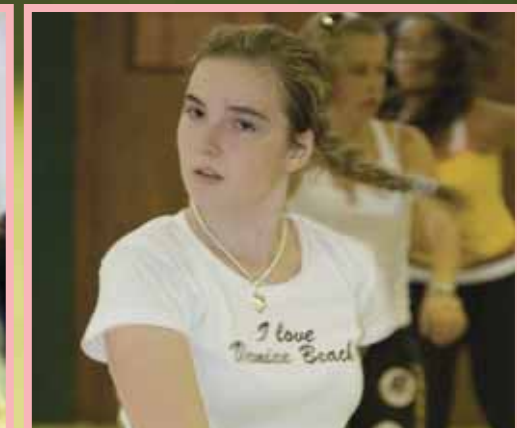
After the English language classes, the afternoon is spent expressing yourself through dance and movement.

The course is designed to suit all levels of ability and is for people who enjoy dancing, but who don't necessarily want to take it up as a career. Our dance course takes place in the school with a qualified dance instructor with the emphasis on modern jazz, street dance and the latest dance techniques.

For four afternoons each week, you will spend two hours putting together routines and learning new contemporary moves. Then at the end of the afternoon you will have the opportunity to join your friends in general activities.

All students on the dance course will have the opportunity to showcase what they have learned in the evening cabaret shows.

SAMPLE PROGRAMME	Monday	Tuesday	Wednesday	Thursday	Friday	Saturday	Sunday
Morning 9.00-10.00	Placement test new students	English	English	English	English	Excursion to London, Oxford, Bristol	Arrival day for new students  Excursion to London, Longleat, Thorpe Park
10.00-11.00	Communication and fluency	Communication and fluency	Communication and fluency	Communication and fluency	Communication and fluency		
11.00-11.30	Break	Break	Break	Break	Break		
11.30-12.30	English	English	English	English	English		
Lunch							
Afternoon	Free movement class and level assessment	Contemporary jazz	Excursion: Bath	Contemporary jazz dance	Contemporary dance		
16.30-17.30	Multi-sports	Multi-sports		Multi-sports	Multi-sports		
Dinner							
Evening	Video, volleyball, inflatables	Cabaret, swimming	Barbecue party, sports hall	Pop quiz, cinema trip	Blind date, bowling	Disco	Karaoke party



Summer Dance



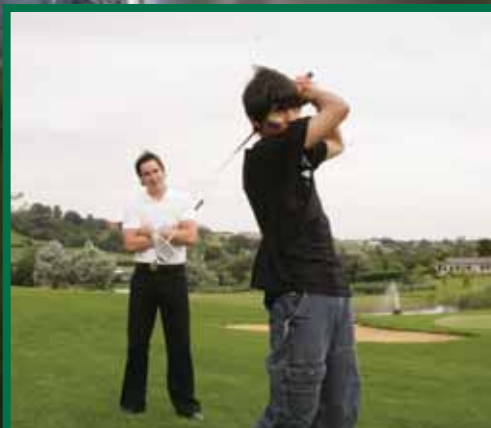
# hole in one!



Are you a complete beginner or a high handicap player? Summer Golf is for you if you want to improve your game with a qualified PGA instructor. Instruction takes place at a local professional golf club which offers tuition at all levels. Students use the practice driving range, pitching and putting green, and more advanced students may play the course itself. You will be assessed and have your stroke corrected using video analysis.

Be it one, two or three weeks, our well-proven system of evaluation and analysis provides tailor-made tuition in an excellent small group environment. With two hours of professional instruction for four afternoons each week, you will then return to the school where you can choose to relax in the pool or take part in general activities with your friends.

SAMPLE PROGRAMME	Monday	Tuesday	Wednesday	Thursday	Friday	Saturday	Sunday
Morning 9.00-10.00	Placement test new students	English	English	English	English	Excursion to London, Oxford, Bath	Arrival day for new students  Excursion to London, Longleat, Thorpe Park
10.00-11.00	Communication and fluency	Communication and fluency	Communication and fluency	Communication and fluency	Communication and fluency		
11.00-11.30	Break	Break	Break	Break	Break		
11.30-12.30	English	English	English	English	English		
Lunch							
Afternoon	Video assessment and professional plan, group clinic, and the fundamentals	Warm-up/ personal workstations, group clinic, and the full swing	Excursion: Cheddar Gorge	Warm-up/ personal workstations, group clinic, and the short game	Professional assessment with video analysis, and course instruction		
16.30-17.30	Multi-sports	Multi-sports		Multi-sports	Multi-sports		
Dinner							
Evening	Video, volleyball, inflatables	Cabaret, swimming	Barbecue party, sports hall	Pop quiz, cinema trip	Blind date, bowling	Disco	Karaoke party



Summer Golf



# make a splash!



Morning language classes will help you to develop your English, and then in the afternoon you can put it into practice afloat!

The course takes place at the South Cerney Outdoor Education Centre about 45 mins from the school, and is accredited by The Royal Yachting Association.

Principally you will be taught the basic techniques of sailing with fully qualified and

experienced instructors. The staff will guide you safely through the exciting sailing activities using oppies and toppers, depending on your age and experience.

Due to the distance from the school, our summer sailing course exists of three afternoons of two and a half hours, with the fourth afternoon allowing you to spend time with friends at school on the multi-sports programme.



SAMPLE PROGRAMME	Monday	Tuesday	Wednesday	Thursday	Friday	Saturday	Sunday
Morning 9.00-10.00	Placement test new students	English	English	English	English	Excursion to London, Oxford, Bristol	Arrival day for new students  Excursion to London, Longleat, Thorpe Park
10.00-11.00	Communication and fluency	Communication and fluency	Communication and fluency	Communication and fluency	Communication and fluency		
11.00-11.30	Break	Break	Break	Break	Break		
11.30-12.30	English	English	English	English	English		
Lunch							
Afternoon	Sailing	Sailing	Excursion: Stonehenge	Sailing	Badminton, football, table tennis		
Dinner							
Evening	Video, volleyball, inflatables	Cabaret, swimming	Barbecue party, sports hall	Pop quiz, cinema trip	Blind date, bowling	Disco	Karaoke party



Summer Sailing



# giddy up!



Students ride at a nearby trekking centre four times each week for two hours. As an approved member of the British Horse Society, the centre features two outdoor schools, a jumping area and offers trekking and instructional rides across hundreds of acres.

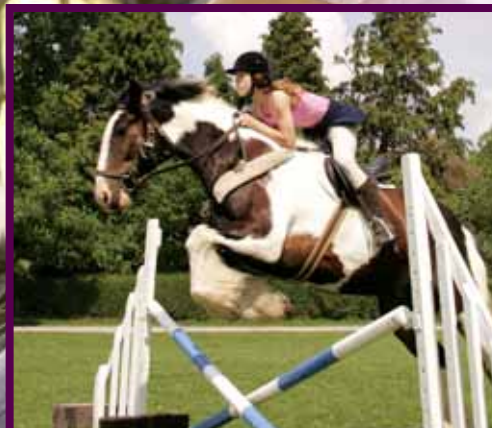
All abilities are catered for and instruction is in small groups. Beginners are taught to ride correctly, and all students receive an

introduction to horse and stable management, learn to bond with their horse by tacking up and grooming, and join in the weekly mini-gymkhana. More experienced riders can develop their 'clear round' and cross country jumping.

Students should bring their own riding clothes, including shoes with a heel. Riding hats may be borrowed from the centre.



SAMPLE PROGRAMME	Monday	Tuesday	Wednesday	Thursday	Friday	Saturday	Sunday
Morning 9.00-10.00	Placement test new students	English	English	English	English	Excursion to London, Oxford, Salisbury	Arrival day for new students  Excursion to London, Longleat, Thorpe Park
10.00-11.00	Communication and fluency	Communication and fluency	Communication and fluency	Communication and fluency	Communication and fluency		
11.00-11.30	Break	Break	Break	Break	Break		
11.30-12.30	English	English	English	English	English		
Lunch							
Afternoon	Riding lesson, assessment, stable management	Cross country lesson or off road hacking in the fields	Excursion: Stonehenge	Riding lesson, games or clear round jumping	Mini gymkhana		
16.30-17.30	Multi-sports	Multi-sports		Multi-sports	Multi-sports		
Dinner							
Evening	Video, volleyball, inflatables	Cabaret, swimming	Barbecue party, sports hall	Pop quiz, cinema trip	Blind date, bowling	Disco	Karaoke party



Summer Horse Riding



# think ahead



Summer Study is an ideal and enjoyable method of raising your academic and language standards in preparation for entry into the British education system. The timetable is very similar to a typical British school. In addition to English in the mornings, there is a combination of science, computing, maths, geography and art, for example. Subjects are taught by specialist teachers who provide plenty of 'hands on' experience.

Whether or not you decide to continue on to full-time British schooling, the Summer Study programme will give you a practical insight into British education.

But it's not all study! After 4pm, Summer Study students join the activity programme. During the evenings and at weekends, they join our other students for social and cultural events.

SAMPLE PROGRAMME	Monday	Tuesday	Wednesday	Thursday	Friday	Saturday	Sunday
Morning 9.00-10.00	Maths	English	English	Maths	Geography	Excursion to London, Oxford, Bath	Arrival day for new students  Excursion to London, Longleat, Thorpe Park
10.00-11.00	English	Geography	Science	English Plus	Geography field work		
11.00-11.30	Break	Break	Break	Break	Break		
11.30-12.30	Science	IT	English Plus	English	IT		
Lunch							
Afternoon	IT, and Arts	Business studies Science	Excursion: Stonehenge	Business studies IT	Science, Art		
16.30-17.30	Multi-sports	Multi-sports		Multi-sports	Multi-sports		
Dinner							
Evening	Video, volleyball, inflatables	Cabaret, swimming	Barbecue party, sports hall	Pop quiz, cinema trip	Blind date, bowling	Disco	Karaoke party



Summer Study



# think more!



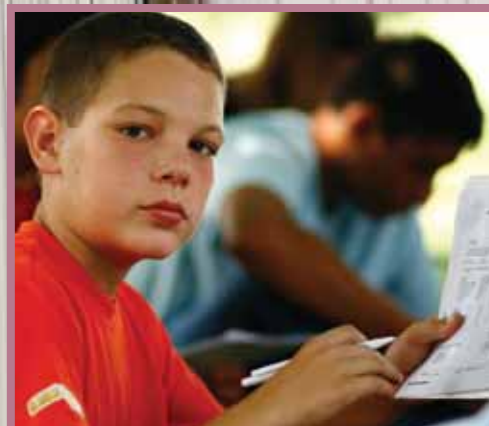
This course has been developed to provide our junior students with a fast track option to improving their English language skills. Students will have 23 hours of English language tuition per week (5 x 1 hour lessons per day)\*. Lessons will be organized between mornings and afternoons. Morning lessons will focus on more general English in multinational groups of no more than 12 students per class. Afternoon lessons take place in much smaller groups focus more on specific language skills and project work.

At the end of the afternoon, all students on course will have the opportunity to join the rest of the students and relax with perhaps a game of tennis, volleyball in the sports hall, or a swim in the school pool.

If you are looking for a quicker way to improve your English, then the Summer Intensive course is just for you.

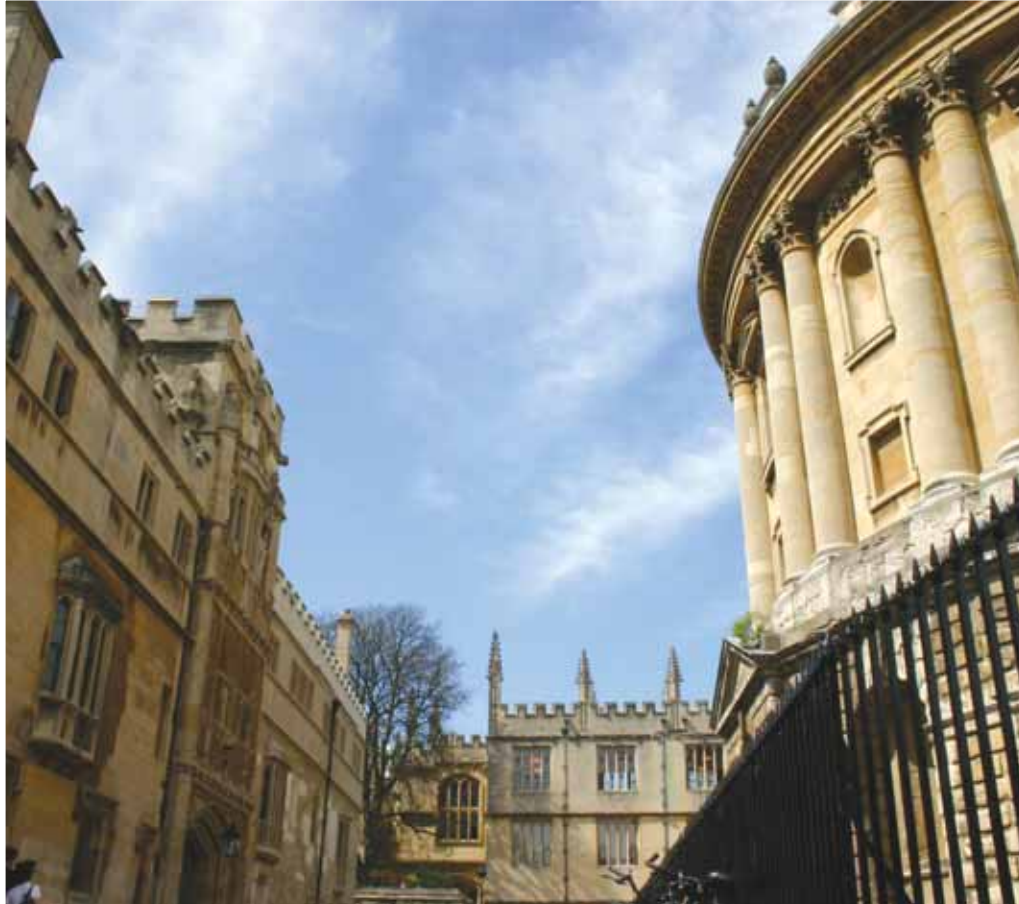
\*Except Wednesdays when there is a half day trip

SAMPLE PROGRAMME	Monday	Tuesday	Wednesday	Thursday	Friday	Saturday	Sunday
Morning 9.00-10.00	Placement test new students	English	English	English	English	Excursion to London, Oxford, Bristol	Arrival day for new students  Excursion to London, Longleat, Thorpe Park
10.00-11.00	Communication and fluency	Communication and fluency	Communication and fluency	Communication and fluency	Communication and fluency		
11.00-11.30	Break	Break	Break	Break	Break		
11.30-12.30	English	English	English	English	English		
Lunch							
Afternoon	Language skills and project work	Language skills and project work	Excursion: Bath	Language skills and project work	Language skills and project work		
16.30-17.30	Multi-sports	Multi-sports		Multi-sports	Multi-sports		
Dinner							
Evening	Video, volleyball, inflatables	Cabaret, swimming	Barbecue party, sports hall	Pop quiz, cinema trip	Blind date, bowling	Disco	Karaoke party



Summer Intensive





great  
days out!



At the MW Summer School, students benefit from two full day trips and one half day trip per week. These trips take place on Wednesday afternoons and all day on Saturdays and Sundays\*.

The MW Summer Schools are located in beautiful parts of England. The local areas are surrounded by interesting and well-known places to visit on half days such as Salisbury, Stradford Upon Avon and Bath. On Saturdays students can travel further afield to explore such famous locations as London, Oxford, Portsmouth, Cambridge and Bristol, while Sundays are often spent in one of the

many exciting theme parks such as Chessington World of Adventures or Thorpe Park, or perhaps a day at the Longleat Safari Park.

Students will prepare for the places they visit in their classes, and these excursions will add to the whole cultural experience of an English summer!

\*Please note that in the last week students may miss a full day trip due to their departure .

Destinations will vary depending on which centre you choose.

# Excursions





come and  
**join us!**



We encourage you to book through one of our recognized agents or representatives. They will advise the best course for you and help with all admissions procedures. They may also be able to arrange cheaper travel to England than you could yourself.

If you don't know a representative, please contact us here in England. Fill in the booking form, tick your course dates and fax the information to us.

### *Embassy i-study*

*Embassy i-study* is an online learning package. It can be purchased for a one-off fee of £50 and entitles the student to a twelve-week online subscription. It focuses on improving a student's listening and speaking skills and can therefore be an aid to prepare for Summer school or a way to continue the progress made when the student returns home.

See the enclosed Booking Guide for further information.

“ The staff are friendly and nice.  
When we have a problem, we can talk to them. ”

Florence Habisrentinger from Switzerland

# Making a booking



## Contact MW Summer Schools:

### International Admissions Centre

Lorna House, 103 Lorna Road  
Brighton  
BN3 3EL  
T +44 1273 322309  
F +44 1273 208527

To contact us online:

If you are a student please visit [www.embassyces.com/mwss](http://www.embassyces.com/mwss)

If you are an agent please visit [www.studygroup.biz/contact](http://www.studygroup.biz/contact)



## World class education. Worldwide.

With 20 schools and 16 offices across 13 countries, Study Group annually helps over 35,000 students worldwide achieve their ambitions.

Through our portfolio of world class colleges we deliver the most comprehensive range of quality educational courses available.

[www.studygroup.com](http://www.studygroup.com)

LANGUAGE TRAINING  
TEACHER TRAINING  
HIGH SCHOOL PLACEMENT  
UNIVERSITY PREPARATION  
COLLEGE AND UNIVERSITY PLACEMENT  
BACHELOR AND MASTERS DEGREES  
CAREER TRAINING

**BellerbysCollege**  
PREPARATION FOR UNIVERSITY EDUCATION

**EmbassyCES**  
ENGLISH LANGUAGE TRAINING WORLDWIDE

**MartinCollege**  
BUSINESS AND TECHNOLOGY TRAINING

**TaylorCollege**  
PREPARATION FOR UNIVERSITY SUCCESS

## MW Summer Schools Booking Guide 2008

### Prices and Dates

COURSE	DATES AVAILABLE	PRICE PER WEEK
Summer Multi-sports	06 July – 17 August	£685
Summer Tennis	06 July – 17 August	£785
Summer Football	06 July – 17 August	£785
Summer Dance	06 July – 17 August	£785
Summer Golf	06 July – 17 August	£785
Summer Sailing	06 July – 17 August	£785
Summer Horse Riding	06 July – 17 August	£785
Summer Art and Design	06 July – 03 August	£785
Summer Study	06 July – 17 August	£785
Summer Intensive	06 July – 17 August	£785

### How to book

- 1) Decide which dates you wish to visit England. Read the brochure carefully and select the centre and course or courses you wish to attend.  
Students can choose to take one course or several different courses throughout their stay. The minimum length of stay is two weeks.
- 2) Fill in all sections of the booking form, ticking the box for each week and course choice. If you are booking for more than one child please photocopy the form and fill in one for each child.
- 3)
  - a) Booking with agents – You may book through a recognised MW Summer School agent. Pass the form to them and they will help you complete all formalities including transport.
  - b) Booking by post – complete the form, enclose a £200 deposit made payable to Embassy Educational Services Ltd and mail to:  
The Admissions Officer  
MW Summer School  
Lorna House  
103 Lorna Road  
Hove, East Sussex  
BN3 3EL

c) Booking by phone, fax or email – complete and fax the form or contact us by telephone or email:  
T +44 1273 322309  
F +44 1273 208527  
E mwssummer@studygroup.com

- 4) We accept payment by cheque (UK £ only), MasterCard, Visa or American Express. Payment by credit card is subject to a 2.5% surcharge. Accounts may also be settled by cash or bank transfer.  
Cheques should be made payable to:  
Embassy Educational Services UK Limited  
For payment by bank transfer please quote the following:  
Bank name: National Westminster Bank plc  
Bank address:  
103 Church Road, Hove  
East Sussex BN3 2BS  
Bank sort code: 53-61-02  
Account number: 01025996  
Swift code: NWBKGB2L  
Bank IBAN No: GB95NWBK53610201025996

### Confirmation of booking

On receipt of a minimum £200 deposit we will confirm your place on the course. Full payment must be received by us 14 days before arrival. After this date all bookings must be paid in full.

When we confirm your place you will receive the **MW Summer School enrolment pack**. This will contain:

- Welcome letter
- Certificate of enrolment
- Visa support letter, if applicable
- Detailed arrival information and confirmation of transfer, if requested
- Parent guide including ancillary, medical and dietary information, and a clothing list for your course

# Booking form Please print clearly in CAPITAL LETTERS

## Parents details

Parent/guardian name	Emergency contact
Mailing Address	Email
Telephone (home)	Fax <span style="float: right;">Country</span>
	Telephone (work)

## Agent (if required)

Name	Emergency contact
Address	Email
Telephone (home)	Fax <span style="float: right;">Country</span>
	Telephone (work)

## Student details

Family name	Given name
<input type="checkbox"/> Male <input type="checkbox"/> Female	Date of birth <small>d d / m m / y y</small>
Nationality	Country of birth
Age at start of course	Your own language

Is the student in good health? Yes  No  If no please give details on a separate sheet

Centre **WARMINSTER**  **KINGHAM HILL**

**Course options and dates** Courses run from Sunday, 06 July to Sunday, 17 August. Please tick weeks required.

	PRICE PER WEEK	July			August		COST
		06-13	13-20	20-27	27-03	03-10	
Summer Multi-sports	£685						
Summer Tennis	£785						
Summer Football	£785						
Summer Dance	£785						
Summer Golf	£785						
Summer Sailing	£785						
Summer Horse Riding	£785						
Summer Art and Design	£785						
Summer Study	£785						
Summer Intensive	£785						

Do you require a visa support letter? Yes  No

Visa support letters cannot be issued until full payment has been received

Do you require pocket money at £50 per week? Yes  No

Will you be bringing your own golf clubs? Yes  No

If you are horse riding have you completed the additional Rider's Registration form? Yes  No

Optinal extra: *i-Study* at £50 Yes  No

### AIRPORT TRANSFER

Do you require an airport transfer? Yes  No  If yes, please fill in the section below

Have you booked an unaccompanied minor service?\* Yes  No

Airport: Heathrow  Gatwick  Stansted  Birmingham  Bristol

Other (please specify)

Date	Time	Fight n°	From/to
Arrival		Departure	

\*Please check with your airline as this service is essential for some travellers, particularly those under 12

## Payment method

Please indicate your preferred method of payment: Cheque (UK £ only)  Bank transfer  Credit card

We accept payment by international credit card: MasterCard, Visa and American Express (subject to 2.5% surcharge). If you wish to pay by international credit card, please complete the following section:

Please indicate your preferred method of payment: Cheque (UK £ only)  Bank transfer  Credit card

I hereby authorise Study Group to charge UK£  to my credit card

<input type="checkbox"/> MasterCard	<input type="checkbox"/> Visa	<input type="checkbox"/> American Express	Card number	Expiry date	Security code (UK)
-------------------------------------	-------------------------------	---	-------------	-------------	--------------------

Name and address of card holder (mandatory)	Signature of card holder
	<input type="checkbox"/> Please deduct the final balance from this credit card on the due date

**Agreement Statement of Parent/Guardian:** I have read the information contained in the brochure and the published Terms and Conditions and accept them. In case of illness or injury I hereby grant permission to the School to follow the advice of the attending medical consultant. I understand that all fees and expenses must be settled prior to the start of the course and that failure to comply with this may result in admission being delayed.

Name (please print)	Relationship (eg: Mother/Father etc)
Signature	Date

## Further information

### The courses

All courses start on a Sunday and students should report to:

#### MW Summer Schools

Warminster School

Warminster

Wiltshire

BA12 8PJ

or

Kingham Hill School

Kingham,

Chipping Norton,

Oxfordshire

OX7 6TH

Operational from 06 July 2008

e: mwssummer@studygroup.com

Emergency telephone: +44 771 771 8776

### Embassy i-study

*Embassy i-study* is an online learning package. It can be purchased for a one-off fee of £50 and entitles the student to a twelve-week online subscription. It focuses on improving a student's listening and speaking skills and can therefore be an aid to prepare for Summer school or a way to continue the progress made when the student returns home.

### Arrivals

#### BY AIR

If you would like us to arrange a transfer from the airport to the centre this should be reserved at the time you make your booking, by ticking the box. A charge is made for this service.

All courses (lessons) start on Monday so it is best to arrive at the school on Sunday to allow time to settle into your accommodation.

#### TRANSFERS

All charges are per person for **single** transfers

Heathrow - £115 Gatwick - £120

Stansted - £120 (Kingham Hill)

- £165 (Warminster)

Birmingham - £115 (Kingham Hill only)

Bristol - £85 (Warminster only)

Other transfer costs available on request.

In addition to our individual service we also operate a shuttle service from London Heathrow to both our Warminster and Kingham Hill centres on the following dates:

#### For Arrivals:

Sunday 6th July / Sunday 13th July / Sunday 20th July / Sunday 27th July / Sunday 3rd August

Shuttle will depart Heathrow at 12.00 hours (midday) and 20.00 hours

#### For Departures:

Sunday 20th July / Sunday 27th July / Sunday 3rd August / Sunday 10th August / Sunday 17th August

Shuttle will arrive at Heathrow at 08.00 hours and 14.00 hours

The price for a **single** transfer on the shuttle bus will be GBP£32.50. Places will be limited to the size of the shuttle service and will operate on a first come, first served basis.

#### BY CAR

If you would like us to send you a map of directions to get to the school please ask when making your reservation.

### Damage deposits

On arrival, all students will be required to lodge a £20 damage deposit with MW Summer School staff. This deposit will be returned immediately prior to departure, subject to any damage caused to the School or its property.

### Medical form

In order for us to have all necessary medical details concerning your child you will be asked to complete our medical form which will be sent to you with the MW Summer School enrolment pack. Once completed, the form should be returned to the office or brought with your child.

### Keeping in touch

All children are encouraged to phone home immediately upon arrival and we provide a free phonecard so they can do this easily. We ask you not to phone the centre during the first few days to allow your child to settle in.

### Food

We provide three hot meals every day, except when children are going on a full day excursion when they will be given a packed lunch.

There is a choice of food at each meal time including a vegetarian option. Our meals are as varied as possible. Special diets can often be catered for if you give us details on the medical form sent to you with our MW Summer School enrolment pack. In addition there are snack breaks, morning, afternoon and evening.

### Sleeping

Students aged 7 to 13 usually sleep in single sex dormitories. A member of the staff team sleeps close by. Older children between 14 and 17 will usually have single, twin or triple rooms. All rooms share bathroom facilities.

### What to bring

Recommended clothing varies according to the course chosen. Everyone should bring a towel, T-shirts, trainers, tracksuits and a set of smart clothes for discos in addition to any special clothing on the list sent with your enrolment pack. All bedding is provided. Students should bring their own towels and an alarm clock.

**Summer multi-sports** – all EFL course books are provided but students should bring pens, pencils and dictionaries. Sensible summer clothes with a lightweight jacket (in case it rains!) are needed for excursions along with T-shirts, sports shoes and swimwear for afternoon sports.

**Summer tennis** – tennis rackets will be provided but please bring your own if you wish. Tennis whites and tennis shoes are recommended.

**Summer football** – football boots are preferred but not essential. Wet weather clothing is advisable.

**Summer dance** – tracksuits or similar comfortable clothing are recommended. Footwear should be jazz shoes or bare feet.

**Summer golf** – we recommend that you bring your own golf clubs if you have them (some clubs may be borrowed from the golf club). Golf shoes are preferred but not essential.

**Summer sailing** – all students should bring swimwear, shorts, T-shirts and wetsuits if you prefer. Life jackets and safety clothing are provided.

**Horserying** – all students should bring riding jodhpurs or suitable trousers (not jeans), riding boots and their own riding hat. If you do not have your own hat this may be provided by the riding school. If you do not have riding boots then please bring a pair of sturdy shoes with a small heel.

**Summer art and design** – clothing as for Summer Multi-sports. No specialist clothing or equipment required. Students are welcome to bring their own sketchbook.

**Summer study + Summer intensive** – there are no special requirements as all course books are provided, but sensible clothes and jackets are needed for excursions and outdoor field work as well as sports clothes, including swimwear, for the activities.

### Laundry

There are laundry facilities on site. Washing will be done for your child at least once a week. Please make sure all clothes, towels and swimwear are clearly marked. Dry cleaning can be arranged at cost.

### Lost property

If something is lost your child should contact a member of our staff immediately.

### Pocket money and valuables

The cost of all day-time activities is included in the fees. Nevertheless children like to have pocket money for drinks, sweets and souvenirs. We believe a maximum of £50 per week is sufficient. All money and valuables, passports and return tickets should be deposited with the school office on arrival. Pocket money may be collected a specific time each week.

### Safety

The welfare of all children at our schools is our most important consideration. We are "in loco parentis" and apply the same standards of care and safety that any parent would expect.

Our staff are selected with this in mind and a staff/student ratio of at least 1:8 is in place.

## Terms & conditions

- 1) We will confirm a place once we have received a completed booking form accompanied by the deposit of £200. The booking of a place is regarded as your acceptance of all our conditions and rules.
- 2) Students attending Summer School must comply with the directions given to them and follow the rules of the School.
- 3) We accept children on the assumption that they are in good health.  
We do not accept responsibility for any loss of, or damage to, any property belonging to participants attending the Summer School. Whilst every help is given, it is the child's responsibility to ensure that all belongings are collected before departure. We do not accept responsibility for any loss or expense due to delays or changes in public transport, weather, quarantine, sickness, strike, riot or any other cause.
- 4) Acceptable methods of payment are cash, personal cheques on UK banks, MasterCard, American Express, Visa\* or bank transfer  
\* Payment by credit card is subject to a surcharge of 2.5%  
**Payment should be made to:**  
**Bank:** National Westminster Bank plc  
**Bank address:** 103 Church Road, Hove East Sussex BN3 2BS  
Bank sort code: 53-61-02  
**Account name:**  
Embassy Education Services UK Limited  
**Account No:** 01025996  
**Swift code:** NWBKGB2L  
**Bank IBAN No:** GB95NWBK53610201025996
- 5) All cancellations must be made in writing and will take effect from the date we receive such notice. Cancellation charges, which also apply to the curtailment of any booking, are made according to the amount of notice received as follows:
- 6) The course details, together with the main brochure of which they form a part, have been published in good faith. Courses are subject to alteration, re-arrangement or change in the event of unsuitable weather conditions or other factors beyond our control, including where number of bookings received do not reach the minimum numbers to operate a course viably.  
We reserve the right to make such changes without notice.
- 7) These conditions, together with the published course details, form the basis of any contract between parent/guardian and the Summer School, which contract is subject to the laws of England.
- 8) As students choose our courses to obtain the best programme possible, we must make sure that they can study and enjoy their activities to the fullest. All students must comply with directions given to them and obey the rules of the School. Any student disturbing others through serious misbehaviour will be warned about their actions and given the opportunity to change their behaviour.  
If there is no improvement we reserve the right to require their removal from the School. In such circumstance there will be no refund of fees and any additional costs incurred will be passed on to the parent/guardian for settlement.

Notice prior to commencement	Charges
31 days or more	No Charge
30 days – 7 days	£100
7 days – 36 hours	30% of total holiday cost
Less than 36 hours	100% of total holiday cost

## StudyCare insurance cover for students

It is a condition of booking that students have an adequate level of insurance prior to travelling. Our StudyCare insurance scheme covers students attending MW Summer School.

An outline of the cover provided under this scheme is set out below. This, however, is intended only as a brief summary of the Insurance and in no way replaces the FULL POLICY, containing the full terms, conditions and exclusions, which is available for inspection at the office of MW Summer School.

### Ace rescue

Cover unlimited.

### Personal accident

Insurance for bodily injury to the Insured Person during the period of insurance and causing:

Permanent Total Disablement

Cover up to £25,000. No excess.

### Personal property and baggage

Cover up to £1,500 (£250 per article) for any one claim. Excess £50.

### Money

Cover up to £1,000 (£500 cash/£500 Travellers Cheques). Excess £50.

### Medical, travel and cancellation expenses

Conditions precedent: That all Insured Persons are in good health physically and mentally at the date of booking and are not travelling against the advice of a qualified medical practitioner.

### Medical expenses

Shall mean all reasonable costs incurred for hospital, surgical or other diagnostic or remedial treatment given or prescribed by a qualified medical practitioner. Dental or optical expenses are excluded unless incurred as a result of an emergency, provided that all routine dental and optical treatment is completed prior to the journey.

Cover up to £1,000,000. No excess.

### Cancellation

Should an insured person have to cancel the projected journey prior to commencement or have to curtail it by returning home before completion because of death, accidental bodily injury, illness or compulsory quarantine of the insured person the Insurers shall pay for any irrecoverable or extra payments which have to be made for the travel and accommodation.

Cover up to £5,000. £50 excess.

### Prices

£8 per person per week of stay regardless of how many weeks stayed

e.g. 2 weeks stay £16 fee 6 weeks stay £48 fee

Students will be invoiced for StudyCare insurance to cover sickness, loss of luggage, valuables etc. If you do not wish to take StudyCare insurance you must provide evidence of alternative insurance.

### Travel expenses

Shall mean reasonable additional costs necessarily incurred for:

1) Travel and accommodation expenses of up to two relatives or friends of the insured person who, on medical advice, are required to travel to or remain with the insured person.

2) Travel and accommodation expenses of the insured person incurred in returning to normal country of domicile.

3) Unforeseen travel expenses of the insured person incurred in returning to attend the funeral of a spouse, mother, father, daughter, son, sister, brother of the insured person in his or her normal country of domicile.

Cover up to £5,000. £50 excess.

### Claims

In the event of a claim you should contact ACE Insurance, the administrators of the policy, directly on the telephone numbers which you will receive with your insurance confirmation.