

*"The teachers were fantastic.
Excellent ambassadors!"*
Wolfgang von Schumann,
Germany

WELCOME WILLKOMMEN BIENVENUE BIENVENIDO

*Welcome to LSI – We have a record of over 30 years of successful language training, with many thousands of satisfied students worldwide. LSI centres provide the perfect environment for learning, and all of our teachers are qualified native speakers who possess solid teaching skills. These skills, combined with thorough course preparation, mean that each lesson will bring you a sense of achievement and progress. At LSI we believe that the fastest and most effective way to learn a language is to live and learn it in a country in which it is spoken, and we are committed to providing a total learning experience. — Whether you want to improve your language skills for professional, academic or personal reasons, LSI has the right course for you. The social programmes, quality accommodation and the support we provide during your stay will help you feel at home and ensure that you make maximum use of your time abroad. **Our reputation is your guarantee. We look forward to meeting you.***

David Immanuel & John Bailey
LSI – Language Studies International

OUR EXPERIENCE IS YOUR SUCCESS



*"I feel like I'm at home here.
I think meeting all these people from
all over the world has been amazing.
This is the best opportunity to
learn about other countries and other
cultures. I love Vancouver,
I really like LSI and I would have to
say that these have been the best
6 months of my life."*

Alejandra Silva,
Venezuela

- **LSI INTERNATIONAL ATMOSPHERE** – At LSI you will meet students from all over the world and share the common experience of learning a foreign language.
- **LSI LANGUAGE CENTRES** – Centrally located in some of the most desirable cities in the world, LSI students have easy access to a wide variety of social and cultural activities.
- **LSI SMALL CLASSES, REGULAR INDIVIDUAL COUNSELLING & EFFECTIVE COURSE DESIGN** ensure that you make rapid progress in key communication skills.
- **LSI QUALITY INSPECTED HOMESTAYS** – Daily contact with other students and local people makes sure that you can practise these skills outside the classroom.
- **LSI TEACHERS** – All our teachers are suitably qualified and experienced, and are friendly, helpful and ready to listen.
- **LSI LANGUAGE CENTRES** are fully equipped with up-to-date materials and resources in comfortable surroundings.
- **LSI INTERACTIVE CLASSROOM** – At LSI, languages are taught in a dynamic and energetic way, as we believe active communication in the classroom to be the most effective way of learning – it is only by speaking that one can achieve fluency.
- **LSI FINDS THE RIGHT LEVEL FOR YOU** – On the first day of your course, we will establish your ability and needs by means of a written test and an interview, and place you in the appropriate class for your level.
- **LSI CERTIFICATE** – Upon completion of your course, you will receive a certificate stating the course that you have attended and the level attained, as proof of your language competence. A report is also available if required.
- **LSI MULTIMEDIA/INTERNET** – All LSI language centres are equipped with computer rooms which may be used during regular language lessons or simply for self-study. Programs available range from intonation practice to grammar and vocabulary development.
- **LSI FREE INTERNET ACCESS** for all LSI students.
- **LSI MULTICENTRE COURSES** allow you to learn and live the language in more than one LSI location.

"Both of my teachers were superlative. Each was able to present the material in an understandable fashion, yet have some fun as well."

**Terry Spaeth,
USA**



LSI STANDARD 20 COURSE

- 20 Lessons per week (4 lessons per day)
- Beginner to Advanced levels
- Course length: 1-50 weeks
- Age 16+

During the lessons you will rapidly improve your communication skills in a variety of everyday situations. In 2 lessons each day you will cover the following areas: **grammar, vocabulary, pronunciation**. In a further 2 lessons you will concentrate on: **speaking, listening, reading, writing**. You will use a text book and a wide variety of materials and exercises including role-plays, authentic recorded material, newspapers and magazines.

LSI INTENSIVE 30 COURSE

- 30 Lessons per week (6 lessons per day)
- Beginner to Advanced levels
- Course length: 1-50 weeks
- Age 16+

In the mornings (lessons 1-4) students follow the same programme as the LSI Standard 20 course. In the afternoons (lessons 5-6) we offer a range of options to suit your needs. All LSI schools offer **fluency practice** – these classes consolidate what you have learned in the morning, improving your spoken fluency and pronunciation through

varied discussion on a wide range of topics. There is an emphasis on language for everyday situations. Topics may include: **film and theatre, media studies, current events, politics, local culture, research using the internet**. Other options vary, depending on your level, the language and the LSI language centre where you are studying. Examples are:

Examination Skills – You can prepare for a wide range of examinations (described on page 5).

English for Academic Purposes – You will practise skills such as note-taking and essay writing – essential for university.

Modular English for Business (described on page 6).

English for non-native Teachers of English (described on page 6)

Please see individual LSI language centre pages for details of specific courses offered.

PLUS COURSES

The combination of group and one-to-one learning is ideal when you want additional help with general language skills or more specialised topics. Plus courses are 5 or 10 individual lessons, flexibly arranged and tailored to your needs. Our teachers will work with you to develop your study plan. This course can supplement a Standard 20 or Intensive 30 Course.

"The school was such a friendly place. The teaching methods were great and learning was a pleasure."

**Renate Rathmayr,
University of Vienna, Austria**



YOUR LEVEL AND WHAT YOU CAN ACHIEVE

For guidance on your level and what you can achieve, please see the diagram and the levels description.

| A | B | C | D | E | F |
|--|--|--|--|--|---|
| BEGINNER You only know a few words and phrases. ▶ 4-6 weeks study | ELEMENTARY You can communicate using very simple structures and a basic vocabulary. ▶ 4-6 weeks study | PRE-INTERMEDIATE You can take part in a variety of conversational subjects using basic structures and vocabulary with acceptable accuracy. ▶ IELTS 4-4.5 ▶ TOEFL up to 460 ▶ 8-12 weeks study | INTERMEDIATE You have better control of structures and vocabulary. Errors still frequent but good understanding of the language. ▶ IELTS 4.5-5.5 ▶ TOEFL 460-510 ▶ FCE Grade C ▶ 8-12 weeks study Entry to vocational or academic preparation courses | UPPER INTERMEDIATE You have a wide range of structures used with a fair degree of accuracy. ▶ IELTS 5.5-6.5 ▶ TOEFL 510-560 ▶ FCE Grade A&B ▶ 8-12 weeks study Entry to university degree and diploma courses, internships, or paid work in your host country | ADVANCED You communicate very well using most structures accurately. ▶ IELTS 6.5+ ▶ TOEFL 560+ ▶ CAE ▶ CPE ▶ Progress varies Entry to post-graduate degree courses or work in your host country |



LSI EXAMINATION COURSES – LSI students have a high success rate in examinations. We will be happy to help you decide which examination is most suitable for you. Well structured course programmes, small classes and advice on exam strategies from experienced teachers ensure that you will be fully prepared for the examination. Please remember to check with us that the examination of your choice is available during the period of your study at LSI. Please see the LSI language centre pages for starting dates and details of courses offered at each centre.

| EXAMINATION | LEVEL | EXAMINATION DATES | DESCRIPTION |
|--|---------|---|--|
| ENGLISH | | | |
| University of Cambridge | | | |
| PET Preliminary English Test | ● ● ● ● | March, June, November, December | Accepted and highly regarded around the world as proof of competence in English |
| FCE First Certificate in English | ● ● ● ● | March, June, December | |
| CAE Certificate of Advanced English | ● ● ● ● | March, June, December | |
| CPE Certificate of Proficiency in English | ● ● ● ● | June, December | |
| BEC Business English Certificate | ● ● ● ● | March, May, June, November, December | |
| IELTS International English Language Testing System | ● ● ● ● | Frequently throughout the year | Requirement for enrolment at universities and colleges in the UK, Ireland, Australia and New Zealand |
| TOEFL Test of English as a Foreign Language | ● ● ● ● | Frequently throughout the year | Requirement for admission to universities and colleges in the USA and Canada |
| TOEIC Test of English for International Communication | ● ● ● ● | Frequently throughout the year | Business English exam for international students and professionals |
| FRENCH | | | |
| DELF Diplôme d'Etudes en Langue Française 1er Degré | ● ● ● ● | May, October | Recognised by the French Ministry of Education |
| TEF Test d'Evaluation de Français | ● ● ● ● | Frequently throughout the year | Recognised by French speaking universities and companies |
| SPANISH | | | |
| DELE Diploma de Español como Lengua Extranjera | ● ● ● ● | May, November | Accepted by the Spanish Ministry of Education |
| GERMAN | | | |
| ZD Zertifikat Deutsch | ● ● ● ● | Zürich: July, September, January-February Frankfurt: March, April, June, August, September, October, November. | Accepted almost universally as proof of proficiency in German |
| ZMP Zentrale Mittelstufenprüfung | ● ● ● ● | July, September, January-February | Many universities and colleges set the ZMP as an official entrance requirement |

● Pre-Intermediate ● Intermediate ● Upper Intermediate ● Advanced

"Thank you very much... I'm so happy with my result! I can't believe I got an "A"... This proves that LSI is a very good school with great teachers! Thanks a lot to all of them!"

Gisella Novi, Switzerland

MEB – MODULAR ENGLISH FOR BUSINESS –

English is the international language of business. We have therefore developed a special 12 module course designed to rapidly improve your business communication skills.

- Intermediate to Advanced levels
- Course length: 1-12 weeks
- 10 lessons per week
- Afternoon option on our LSI Intensive 30 course
- Can also be part of the ISY programme.
- Module cycle begins Jan 3 (USA only), Jan 4, Mar 28 (USA only), Mar 29, Jun 20, Sep 12. Students can join every Monday.

In each one-week, self-contained module, through a combination of written exercises, dialogues & role-plays in realistic business situations, you will practice and improve your skills in: **business vocabulary and “buzz words”, email, memo and letter writing, negotiating, interviewing and telephoning in English.**

“I really enjoyed my time at this fabulous school in this beautiful city. I recommend this place to everybody who wants to learn English. Great teachers and a lot of fun.”

Eva Fleisher, Switzerland



| | |
|-----------|---|
| Module 1 | International trade |
| Module 2 | Developing leadership skills |
| Module 3 | Effective communication in presentations |
| Module 4 | Motivation & delegation |
| Module 5 | Marketing & advertising |
| Module 6 | Teambuilding |
| Module 7 | Banking / stockmarkets |
| Module 8 | Effective communication in meetings |
| Module 9 | Recruitment interviewing |
| Module 10 | Decision-making skills |
| Module 11 | Effective communication in selling & negotiations |
| Module 12 | Management styles in international companies |

EET – ENGLISH FOR ENGLISH TEACHERS (NON-NATIVE) – *This course is open to all non-native teachers of English, offering the opportunity to improve English grammar and language skills as well as learn about current ideas and developments in English language teaching. It is a practical course with an emphasis upon improving your classroom skills.*



- Advanced level (in Canada, Upper Intermediate – Advanced)
- Course duration: 4 weeks (in Canada 6 weeks)
- Afternoon option on LSI Intensive 30 programme

paration, designing materials, and self-evaluation.

Previous teaching experience is advantageous but it is not essential.

Language centres: London Central, Vancouver and Toronto.

The course considers the different approaches and methodologies in language teaching and helps you to use them effectively. Other topics include **classroom management, lesson planning and pre-**

“Coming here is the best decision that I have made in my life. I would like to stay longer.”

Maria Piskovic, Switzerland



STUDY & WORK EXPERIENCE PROGRAMMES – An excellent opportunity to practise and develop your language skills in a business environment and gain valuable work experience. The programme combines an LSI course to develop your communication skills and attain a high enough level in the language and a period of work placement. LSI offers both unpaid work experience placements and paid positions.

- Placements are available in the following areas: business, management, marketing, civil engineering, architecture, hospitality management and tourism.
- Applications must be received at least 6 months in advance
- Ages 21-35

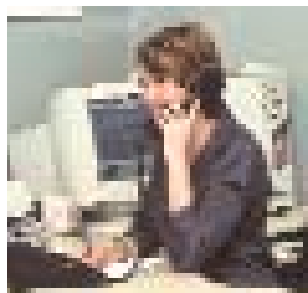
CANADA

WORK EXPERIENCE (UNPAID)

- LSI Intensive 30 course for a minimum of 4 weeks prior to work experience
- Short term placement of 1 to 2 months
- The length of the placement cannot exceed the length of the course

Study and Work Experience programmes are also available in Spain, Costa Rica, Germany and Australia.

| PLACEMENT FEES | |
|-------------------|-----------|
| UK | £ 400 |
| USA | |
| Short term unpaid | US\$ 800 |
| Mid term unpaid | US\$ 1400 |
| Long term unpaid | US\$ 1900 |
| 12 months paid | US\$ 2000 |
| 13-18 months paid | US\$ 2500 |
| CANADA | CD\$ 950 |
| SPAIN | € 300 |
| COSTA RICA | US\$ 380 |
| GERMANY | € 300 |



ENGLAND

WORK EXPERIENCE (UNPAID)

- LSI Intensive 30 course for a minimum of 4 weeks prior to work experience
- Work Experience Placement for 1-6 months
- Select 3 industry/professional areas that you would like to work in and we will then search for a suitable placement
- Applications must be received at least 12 weeks in advance
- Minimum age: 18+

WORK PLACEMENT (PAID)

EU Nationals

- LSI Intensive 30 or Standard 20 course for a minimum of 4 weeks prior to work placement
- Full or part-time work placement in an unskilled job for 1-6 months earning at least £ 4.10 per hour.
- Placements are available in restaurants, bars, shops and hotels
- Applications must be received at least 4 weeks in advance
- Minimum age: 18+

Non EU Nationals

- LSI Standard 20 course for a minimum of 28 weeks.
- Placement in a part-time (maximum 20 hours per week) unskilled job after the first 4 weeks of the course for minimum 24 weeks earning at least £ 4.10 per hour.
- Study and work concurrently
- Placements are available in restaurants, bars, shops and hotels
- Applications must be received at least 4 weeks in advance
- Minimum age: 18+

USA

WORK EXPERIENCE (UNPAID)

Short term placements

- LSI Intensive 30 course for 1-12 months prior to work placement
- Short term placement for 1-2 months
- Applications must be received at least 12 weeks in advance
- Ages: 21-35

Mid and Long Term Placements

- LSI Intensive 30 course for 4 weeks
- 3-6 months (mid term) or 7-12 months (long term) work experience placement
- Applications must be received at least 16 weeks in advance
- Ages: 21-35

WORK PLACEMENT (PAID)

- LSI Intensive 30 course for 4 weeks
- Long term placements for 12 or 13-18 months

EXAM PREPARATION – THE CAMBRIDGE (PET/FCE/CAE/CPE/BEC)/IELTS/TOEFL/TOEIC intensive preparation courses are the fastest way to achieve your target test score. LSI offers you flexibility and intensive focused practice on the exam of your choice.

Cambridge Preparation Courses

- 20/30 lessons per week
- 8/10/12 week programmes
- Minimum age 16+
- Intermediate level and above
- Starting dates and locations – see individual LSI language centre pages, for examination dates see page 5

The course focuses on:

- Active use and accuracy of grammar
- Writing and reading skills
- Listening skills
- Extensive vocabulary practice
- Improving communication ability and comprehension
- Exam skills needed to obtain a high Cambridge exam grade

IELTS, TOEFL & TOEIC Courses

- 30 lessons per week
- 4/8/12 week programmes
- Minimum age 16+
- Intermediate level and above
- Starting dates and locations – see individual LSI language centre pages, for examination dates see page 5

20 lessons per week which concentrate on active grammar input and language skills and 10 lessons per week which focus on study skills and exam practice. In these courses you will study

- Accuracy with grammatical structures
- Communicative skills and ability
- Functional structures
- Vocabulary extension
- Active study skills
- Exam skills needed to obtain a high IELTS, TOEFL or TOEIC score

“I am gaining confidence in writing essays and academic English. LSI gave me invaluable advice in choosing a University and helped me make my applications. I feel confident of attaining an IELTS score of 7 and am looking forward to starting a postgraduate business degree in London.”

Fernando Montes, Colombia

LSI UNIVERSITY FOUNDATION PROGRAMME (UFP) – If you want to study at an English speaking university or college the UFP is the right choice for you. This 12/24 or 36 week programme will improve your English skills, significantly increase your IELTS/TOEFL score and prepare you for a successful academic career.



- 30 lessons per week
- 12/24/36 week programme
- Minimum age 16+
- Intermediate level and above
- **Language centre:** London Central
- **Starting dates:** Jan 4, Mar 29, Jul 4, Sep 26 (12 weeks); Jan 4, Jul 4 (24 weeks); Jan 4, Sep 26 (36 weeks)

During the programme you will:

- Develop your general English language skills
- Develop your academic English language skills
- Prepare for the IELTS or TOEFL examination
- Learn and practise independent study skills necessary for success at university or college

- Create written assignments to help you prepare for your university/college
- Receive regular academic counselling
- Get help and support to apply to university.
- Study English for Business (optional)
- Study a number of special subjects

LSI UNIVERSITY PLACEMENT SERVICE

We offer a counselling service to students planning to study at universities in England, USA, Canada, Australia and New Zealand. This includes:

- Advice on suitable foundation, undergraduate and postgraduate courses
- Advice on IELTS/TOEFL score requirements
- Arranging visits to universities
- Assistance in completing applications and preparing for interviews.

LSI students have been placed in universities such as:

In the UK

- University of Wales (Bangor)
- University of Manchester
- University of Nottingham
- University of Bath
- London School of Economics
- Imperial College London

In the USA

- Notre Dame de Nemour University
- San Francisco State University
- Golden Gate University
- Art Institute of California

In Canada

- Canadian Tourism College
- Kwantlen University College
- Malaspina University College
- Blanche MacDonald Centre (Makeup, Hair & Fashion Design)
- The Art Institute of Vancouver
- Corporate Communications Training College

In Australia

- Central Queensland University
- Griffith University
- Queensland University of Technology
- University of Queensland

In New Zealand

- University of Auckland
- Auckland University of Technology (AUT)
- UNITEC
- Manukau Polytech

LSI INTERNATIONAL SCHOOL YEAR (ISY) – This could be the most exciting year of your life. Achieve a high level of fluency in a language and meet and make new friends from all over the world. The ISY programme offers great value for money and a great choice of course options. Whatever your needs, our highly trained, friendly staff will ensure that your year is a complete success.

- 12/24/36 week programmes
- 30 or 20 lessons per week
- Minimum age 16+
- Beginner to Upper Intermediate levels

An individual study plan will be designed for you on arrival at LSI to suit your level and your aims. We will continue to monitor your progress with regular academic counselling to ensure the success of your programme and the achievement of your aims. Your study plan options can include: **general language classes** (see course description on page 4), **examination courses** (see pages 5 & 8 and individual LSI language centre pages for details of examinations offered), **fluency practice**, **study skills classes and English for business**.

The ISY programme is offered at all LSI language centres but please note that course options may vary between LSI centres. Some course options may only be available on the 30 lesson per week programme. We will be happy to advise you as to which programme will be most suitable for your needs.

ACCOMMODATION

All options are available (see page 11 and individual LSI language centre pages). However, we recommend our carefully chosen home-stays to ISY students, at least for the first month of your programme – the friendly welcome you will receive will help you adjust quickly into life in a new environment.

Work Experience can be arranged for ISY students (see page 7 for terms and conditions).

LSI University Placement Service is also available to all ISY students.



| EXAMPLES OF YOUR ISY STUDY PLAN | | |
|---|------------------------------------|------------------------------------|
| Week 1-12 | Week 13-24 | Week 25-36 |
| 30 LESSONS PER WEEK AT LSI VANCOUVER FOR 36 WEEKS | | |
| General English | FCE Exam Preparation | General English |
| Modular English for Business | | TOEFL Preparation and Study Skills |
| Academic Counselling | Academic Counselling | Academic Counselling |
| 20 LESSONS PER WEEK AT LSI LONDON CENTRAL FOR 36 WEEKS | | |
| General English | IELTS Preparation and Study Skills | FCE Exam Preparation |
| Academic Counselling | Academic Counselling | Academic Counselling |
| 30 LESSONS PER WEEK AT LSI PARIS FOR 24 WEEKS | | |
| General French | General French | — |
| Fluency Practice | DELFL Preparation | — |
| Academic Counselling | Academic Counselling | — |

LSI MULTICENTRE COURSES – It is possible to split your ISY and other LSI courses between two or more LSI language centres. Examples are:

24 weeks ISY Course:
12 weeks in London and 12 weeks in Cambridge

36 weeks ISY Course:
12 weeks in San Diego, 14 weeks in SF/Berkeley and 10 weeks in New York

10 weeks Intensive 30:
6 weeks in Brighton and 4 weeks in London

36 weeks Standard 20:
12 weeks in Paris, 12 weeks in Madrid and 12 weeks in London

We will be happy to advise on all possibilities. Please contact us or our local representative.

“Every teacher is very friendly. I wanted to study more English and they gave me a lot of information and helpful advice.”

Chung-Hee Jo, Korea

LSI FAMILY COURSE – The LSI Family Course is designed for parents who wish to combine a family holiday with their English studies.



While parents and older children follow the course of their choice at LSI Brighton, younger children (ages 5-13) attend the Hove Summer Camp, just 20 minutes by foot and bus from our school. The camp has a fantastic range of activities, including arts and crafts, drama, sports, dancing and indoor games. The facilities are excellent and include a gymnasium and tennis courts. A daily hot lunch is

included in the price. For children who do not have a high level of spoken English, English lessons are provided.

FULL-TIME

(Monday-Friday, 09.00-15.30) includes English lessons (3 hours per day/15 hours per week)

£ 215 per child per week

£ 255 per child per week including daily supervised transport from and to homestay

CHILDMINDING

(Monday-Friday, 15.30-17.30)

£ 25 per child per week

The LSI Family Course is available at LSI Brighton from Jul 18 – Aug 19.

NEW!

LSI YOUNG LEARNERS COURSE – The LSI Young Learners Course is ideal for independent teenagers (aged 14-16).



to practise your English with students from around the world. Stimulating lessons both in and outside the classroom will bring the language alive. Also you will enjoy living in a beautiful, historic British city. It will be a summer experience you will always remember.

Starting dates –

3 week courses:

June 27, July 4 & 11, 2005

2 week courses:

June 27, July 4, 11 & 18, 2005

Fees: £ 550 per week

(includes tuition, full board residential accommodation and full social programme)

The course is based at the Anglia Polytechnic University Campus in central Cambridge. The programme includes English tuition, residential accommodation (full board) and an exciting social programme with regular excursions and fun activities. You will get the chance

LEARN AND LIVE THE LANGUAGE IN A TEACHER'S HOME – The course begins on a Sunday, when you are welcomed into your teacher's home. On the Monday, your lessons will begin – you will receive 20 One-to-One lessons per week.

Your schedule and the form that the lessons take can be arranged between you and your teacher with a great degree of flexibility. For example, a lesson could take the form of a practical shopping trip or a conversation lesson in a park. Themes

and topics covered in the course are negotiable with your teacher, giving you control over what you learn. The Teacher's Home Course is unique in that it allows you to improve your language skills in a variety of natural environments, and the one-to-one aspect of the course ensures that you make progress as rapidly as possible. The Teacher's Home Course is suitable for everyone.

"My contact with the host family was the best; you feel like a guest, not a paying guest."

Elisabet Holmström, Sweden

Language centres: Brisbane, Auckland, Christchurch and Frankfurt.

| EXAMPLE FOR 1 WEEK LSI YOUNG LEARNERS COURSE | | | | | | |
|---|----------------------------------|-----------------------------|-----------------------------|--|-----------------------------|--------------------------------------|
| Sunday | Monday | Tuesday | Wednesday | Thursday | Friday | Saturday |
| Arrival day Or Swimming and shopping afternoon for students who are already here | Welcome and Placement Test | Grammar, Vocabulary, Skills | Grammar, Vocabulary, Skills | Grammar, Vocabulary, Skills | Grammar, Vocabulary, Skills | Trip to Stratford and Warwick Castle |
| | Break time | | | | | |
| | Induction and first lesson | Project Work | Project Work | Project Work | Project Work | |
| | Lunchtime | | | | | |
| | Guided Walking Tour of Cambridge | Punting on the River Cam | Trip to Ely Cathedral | Botanical Gardens & Fitzwilliam Museum | Sports afternoon | |
| | Dinner time | | | | | |
| Meeting with Social organiser Treasure Hunt | Welcome Disco | Bowling | Karaoke | Film Night | Disco | Quiz evening |



ACCOMMODATION AND SOCIAL PROGRAMME – We feel that in addition to your studies you should get to know your host country and its people. All LSI language centres offer a choice of accommodation: you may stay with a family, in a student house, a college residential hall, a residence hotel or a hotel. All our language centres offer an active and interesting social programme.

LSI HOMESTAYS

Our carefully selected homestays offer friendly, comfortable surroundings in which you can experience what life is really like in your host country. Many of our students stay in touch with their host families for years afterwards.

LSI RESIDENTIAL/ STUDENT HOSTELS

Single and twin study bedrooms are available in student halls of residence. Meet students from all around the world and enjoy all the facilities at no extra charge. Bathroom facilities are shared, rooms

are cleaned regularly and bed linen is changed once a week. Catering arrangements differ, but most locations offer breakfast. (Please check individual LSI language centre pages for availability.)

RESIDENCE HOTELS

More economical than hotels, residence hotels offer a more limited service. Weekly maid service is provided, and some residence hotels have kitchen facilities.

HOTELS

We will be happy to advise you on many different categories of hotel close to our schools and make bookings at the hotel of your choice.

SELF-CATERING APARTMENT/ FLATSHARE IN LONDON

Apartments are located across London and accommodate between 4 and 6 people. Single, double and twin rooms are available. Apartments offer all essential facilities to the independent student.

LSI SOCIAL PROGRAMME

Whatever your interests or lifestyle, we will find an appropriate and enjoyable activity for you. Day trips, museum and gallery visits, theatre and cinema outings, restaurants and pubs, international events and sports fixtures are all regular features of our programme.

From the first day, the LSI welcome will make you feel at home

Some activities are free and many others are offered at discounted prices. In addition, arrangements can be made in all locations for most sporting activities – just ask our staff.



LONDON – London is a world-class city of great diversity, offering unrivalled attractions. From culture, history and pageantry to



some of the best nightlife to be found anywhere on earth, London has something for everybody.

THE SCHOOL

LSI London Central is located in the heart of the city, close to universities and the fashionable entertainment district of Soho, in an area full of cafes, bars and pubs catering to the lively student population. The school is comfortable and modern, with free internet access and a wide range of self-study materials available.

Leisure Programme: A full and varied leisure programme allows students to experience the very best



of London and the rest of England, with activities including visits to pubs and restaurants, theatre outings and trips to Oxford, Edinburgh and Stonehenge.

LSI COURSE PRICES IN UK £ – PRICES FOR TUITION ONLY

| LSI Courses | 1 week | 2 weeks | 3 weeks | 4 weeks | 6 weeks | 8 weeks | 10 weeks | 12 weeks | add. week |
|---|--------|---------|----------|----------|----------|---------|----------|-----------|-----------|
| STANDARD 20 (MORNING) | 185 | 325 | 465 | 605 | 885 | 1165 | 1445 | 1725 | 130 |
| STANDARD 20 (AFTERNOON) | 155 | 275 | 395 | 515 | 755 | 995 | 1235 | 1475 | 110 |
| INTENSIVE 30/MEB/EET | 250 | 420 | 590 | 760 | 1100 | 1440 | 1780 | 2120 | 160 |
| TOEFL/TOEIC/IELTS PREPARATION COURSE | | | | 760 | 1440 | | 2120 | | |
| PLUS COURSE SUPPLEMENT: 5 EXTRA ONE-TO-ONE LESSONS PER WEEK | | | | | | | | | 175 |
| PLUS COURSE SUPPLEMENT: 10 EXTRA ONE-TO-ONE LESSONS PER WEEK | | | | | | | | | 350 |
| LSI 20/30 CAMBRIDGE EXAM COURSES | | | | | | | 10 weeks | 1445/1780 | |
| | | | | | | | 12 weeks | 1725/2120 | |
| ISY-INTERNATIONAL SCHOOL YEAR & UFP – UNIVERSITY FOUNDATION PROGRAMME | | | 12 weeks | 24 weeks | 36 weeks | | | | |
| INTERNATIONAL SCHOOL YEAR 20 LESSONS PER WEEK | | | | | | | 1725 | 2650 | 3740 |
| INTERNATIONAL SCHOOL YEAR 30 LESSONS PER WEEK | | | | | | | 2120 | 3070 | 4320 |
| UFP – UNIVERSITY FOUNDATION PROGRAMME | | | | | | | 2120 | 3070 | 4320 |

EXAMINATION FEES

| | |
|---------|------|
| PET | £ 60 |
| FCE/BEC | £ 95 |

ADDITIONAL FEES

| | |
|----------------------------------|-------|
| Registration fee | £ 50 |
| Placement fee – Work Experience: | £ 400 |
| Airport transfers (optional): | |
| Heathrow/London City – one way | £ 65 |
| Gatwick/Stansted – one way | £ 80 |

ACCOMMODATION

| | |
|---|-------------|
| Homestay per person, per week: | |
| Twin room, B & B*/half board* | £ 95/£ 120 |
| Single room, B & B/half board | £ 105/£ 130 |
| Christmas supplement (Dec 25 - Jan 8) per week: | £ 20 |
| * Only when two students book together for the same start date. | |

ACCOMMODATION

| | |
|--|-------------|
| Executive accommodation supplement per week: | |
| B & B/H.B. | £ 20/£ 25 |
| B & B/H.B., private bathroom | £ 70/£ 75 |
| Homestay zone 2 supplm. per week | £ 20 |
| Self-catering flat per person, per week: | |
| Single/double room | £ 155/£ 105 |
| Residential accommodation, all year, per person, per week (max. stay 4 weeks): | |
| 3-4 bedded rooms, B & B/H.B. | £ 135/£ 175 |
| Jun 13-Sep 9 per week: | |
| Single room, B & B/half board | £ 190/£ 230 |
| Jun 20-Sep 9 per week: | |
| Single room, B & B, private bathroom | £ 200 |
| Student Residence (all year): prices available on request. | |
| Hotel: 2,3 and 4 star hotel prices available on request. | |

GENERAL COURSES

STANDARD 20 (mornings or afternoons*)

- 20 lessons per week (1-5 weeks)
- 1 lesson: 50 minutes (4 lessons per day)
- 14 students max. per class
- All levels
- *Elementary to Advanced levels for the afternoon course

INTENSIVE 30

- 30 lessons per week (1-5 weeks)
- 1 lesson: 50 minutes (6 lessons per day)
- 14 students max. per class
- All levels

PLUS COURSES

- 20/30 +5 or +10 individual lessons per week
- All levels

MEB – MODULAR ENGLISH FOR BUSINESS

- Afternoon option on LSI Intensive 30 course
- 14 students max.
- Intermediate to Advanced levels

Starting dates for Elementary to Advanced levels: each Monday

Starting dates for students at Beginner level: Jan 4, Feb 7, Mar 7, Apr 4, May 3, Jun 6, Jul 4, Aug 1, Sep 5, Oct 3, Nov 7, Dec 5

CAMBRIDGE EXAM COURSES

- Preliminary (PET)
- First Certificate (FCE)
- Business (BEC)
- 20 or 30 lessons per week
- 10 or 12 weeks
- see page 8

Starting dates:

FCE 10 weeks: Jan 4

FCE 12 weeks: Mar 29, Sep 26

For PET and BEC starting dates please contact LSI London Central
For examination dates, see page 5

IELTS, TOEFL & TOEIC PREPARATION

- 30 lessons per week
- Intermediate to Advanced levels
- 4/8/12 weeks
- see page 8

INTERNATIONAL SCHOOL YEAR

- 20 or 30 lessons per week
- Beginner to Upper Intermediate levels
- 12, 24 or 36 weeks

Starting dates:

Jan 4, Feb 7, Mar 7, Apr 4, May 3, Jun 6, Jul 4, Aug 1, Sep 5, Oct 3, Nov 7, Dec 5
For examination dates, see page 5

EET – ENGLISH FOR ENGLISH TEACHERS (NON NATIVE)

- Advanced level
- Afternoon option on the LSI Intensive 30 course
- 4-week modular course

Starting dates: Jul 4, Aug 1

WORK EXPERIENCE

- see page 7

UFP – UNIVERSITY FOUNDATION PROGRAMME

- see page 8

UNIVERSITY PLACEMENT

- see page 8

EXECUTIVE COURSES

ONE-TO-ONE

9 DAY COMPACT COURSE

LSI MINI GROUP – ENGLISH FOR BUSINESS

LSI MINI GROUP – ENGLISH FOR BUSINESS PLUS 5

- see pages 31-34

PUBLIC HOLIDAYS

No instruction on the following dates:
Jan 3, Mar 25 & 28, May 2 & 30, Aug 29.
School is closed from Dec 24, 2005 to Jan 8, 2006.

GENERAL COURSES

STANDARD 20

- 20 lessons per week (1-50 weeks)
- 1 lesson: 50 minutes (4 lessons per day)
- 14 students max. per class
- Elementary to Advanced levels

INTENSIVE 30

- 30 lessons per week (1-50 weeks)
- 1 lesson: 50 minutes (6 lessons per day)
- 14 students max. per class
- Elementary to Advanced levels

PLUS COURSES

- 20/30 +5 or +10 individual lessons per week
- Elementary to Advanced levels

MEB - MODULAR ENGLISH FOR BUSINESS

- Afternoon option on LSI Intensive 30 course
- 14 students max.
- Intermediate to Advanced levels

Starting dates: each Monday
Beginners at London Central only

CAMBRIDGE EXAM COURSES

- First Certificate (FCE)
- Advanced (CAE)
- Proficiency (CPE)
- 20 or 30 lessons per week
- 10 or 12 weeks
- see page 8

Starting dates:
FCE & CAE 10 weeks: Jan 4
FCE, CAE & CPE 12 weeks: Mar 29, Sep 26
For examination dates, see page 5

TOEFL & TOEIC PREPARATION

- 30 lessons per week
- Intermediate to Advanced levels
- 4/8/12 weeks
- see page 8

INTERNATIONAL SCHOOL YEAR

- 20 or 30 lessons per week
- Elementary to Upper Intermediate levels
- 12, 24 or 36 weeks

Starting dates:
Jan 4, Feb 7, Mar 7, Apr 4, May 3, Jun 6,
Jul 4, Aug 1, Sep 5, Oct 3, Nov 7, Dec 5
For examination dates, see page 5

WORK EXPERIENCE

- see page 7

UNIVERSITY PLACEMENT

- see page 8

EXECUTIVE COURSES

ONE-TO-ONE

- see page 31-34

PUBLIC HOLIDAYS

No instruction on the following dates:

Jan 3, Mar 25 & 28, May 2 & 30, Aug 29.

School is closed from Dec 24, 2005 to

Jan 8, 2006.



THE SCHOOL

LSI London Hampstead is located just 15 minutes by Underground from LSI London Central. The school itself is in an elegant, spacious building with a large and beautiful garden, perfect for summer barbecues and parties. The Learning Centre offers free inter-

net access and a fully equipped language laboratory, and there is also a school library stocked with books, cassettes and CD-ROMs.

Leisure Programme: With everything from guided walks to sporting competitions against LSI Central to weekend trips to Paris, the social programme has something for everyone.



HAMPSTEAD – Hampstead is one of London's loveliest and most fashionable areas - it is green and relaxed, with a village-like atmos-



phere, but is also only minutes away from the very centre of the city. From the natural beauty of Hampstead Heath to the pubs, restaurants, museums and boutiques of Hampstead Village, the area has a great deal to offer.

LSI COURSE PRICES IN UK £ – PRICES FOR TUITION ONLY

| LSI Courses | 1 week | 2 weeks | 3 weeks | 4 weeks | 6 weeks | 8 weeks | 10 weeks | 12 weeks | add. week |
|--|--------|---------|---------|---------|---------|---------|----------|-----------|-----------|
| STANDARD 20 | 185 | 325 | 465 | 605 | 885 | 1165 | 1445 | 1725 | 130 |
| INTENSIVE 30/MEB | 250 | 420 | 590 | 760 | 1100 | 1440 | 1780 | 2120 | 160 |
| TOEFL/TOEIC PREPARATION COURSE | | | | 760 | 1440 | | 2120 | | |
| PLUS COURSE SUPPLEMENT: 5 EXTRA ONE-TO-ONE LESSONS PER WEEK | | | | | | | | | 175 |
| PLUS COURSE SUPPLEMENT: 10 EXTRA ONE-TO-ONE LESSONS PER WEEK | | | | | | | | | 350 |
| LSI 20/30 CAMBRIDGE EXAM COURSES | | | | | | | 10 weeks | 1445/1780 | |
| | | | | | | | 12 weeks | 1725/2120 | |
| ISY-INTERNATIONAL SCHOOL YEAR | | | | | | | 12 weeks | 24 weeks | 36 weeks |
| | | | | | | | 1725 | 2650 | 3740 |
| INTERNATIONAL SCHOOL YEAR 20 LESSONS PER WEEK | | | | | | | 2120 | 3070 | 4320 |
| INTERNATIONAL SCHOOL YEAR 30 LESSONS PER WEEK | | | | | | | | | |

EXAMINATION FEES

| | |
|-------|------|
| FCE | £ 95 |
| CAE | £ 95 |
| CPE | £ 95 |
| TOEIC | £ 60 |

ADDITIONAL FEES

| | |
|--------------------------------------|-------|
| Registration fee | £ 50 |
| Placement fee – Work Experience: | £ 400 |
| Airport transfers (optional): | |
| Heathrow – one way | £ 65 |
| Gatwick – one way | £ 80 |
| London City – one way | £ 65 |
| Stansted one way | £ 80 |

ACCOMMODATION

| | |
|---|-------------|
| Homestay per person, per week: | |
| Twin room, B & B*/half board* | £ 95/£ 120 |
| Single room, B & B/half board | £ 105/£ 130 |
| Christmas supplement (Dec 25–Jan 8) | |
| per week: | £ 20 |
| * Only when two students book together for the same start date. | |
| Executive accommodation supplement, per week: | |
| B & B/H.B. | £ 20/£ 25 |
| B & B/H.B., private bathroom | £ 70/£ 75 |
| Homestay zone 2 supplement, per week | £ 20 |
| Self-catering flat per person, per week: | |
| Single room | £ 155 |
| Double room | £ 105 |
| Residential accommodation Jun 25–Sep 2, per week: | |
| Single room, B & B | £ 175 |
| Student Residence (all year): prices available on request. | |
| Hotel: 2,3 and 4 star hotel prices available on request. | |





GENERAL COURSES

STANDARD 20*

- 20 lessons per week (1-50 weeks)
 - 1 lesson: 50 minutes (4 lessons per day)
 - 14 students max. per class
 - Elementary to Advanced levels
- *This course takes place in the mornings; an afternoon Standard 20 course is available from Jul 4 - Aug 26

INTENSIVE 30

- 30 lessons per week (1-50 weeks)
- 1 lesson: 50 minutes (6 lessons per day)
- 14 students max. per class
- Elementary to Advanced levels

PLUS COURSES

- 20/30 +5 or +10 individual lessons per week
- Elementary to Advanced levels

Starting dates: each Monday
Beginners at London Central only

MEB - MODULAR ENGLISH FOR BUSINESS

- Afternoon option on LSI Intensive 30 course
 - 14 students max. per class
 - Intermediate to Advanced levels
- For starting dates please contact LSI Brighton

CAMBRIDGE EXAM COURSES

- Preliminary (PET) ■ First Certificate (FCE)
 - Business (BEC) ■ 20 or 30 lessons per week ■ 10/12 weeks ■ see page 8
- Starting dates:
FCE 10 weeks: Jan 4
FCE 12 weeks: Mar 29 & Sep 26
For PET and BEC course starting dates please contact LSI Brighton
For examination dates, see page 5

IELTS, TOEFL, & TOEIC PREPARATION

- 30 lessons per week ■ Intermediate to Advanced levels ■ 4/8/12 weeks ■ see page 8
- INTERNATIONAL SCHOOL YEAR**
- 20 or 30 lessons per week ■ Elementary to Upper Intermediate levels ■ 12, 24 or 36 weeks

Starting dates: Jan 4, Feb 7, Mar 7, Apr 4, May 3, Jun 6, Jul 4, Aug 1, Sep 5, Oct 3, Nov 7, Dec 5
For examination dates, see page 5

WORK EXPERIENCE

- see page 7
- UNIVERSITY PLACEMENT**
- see page 8
- FAMILY COURSE**
- see page 10

EXECUTIVE COURSES

ONE-TO-ONE 9 DAY COMPACT COURSE

- see pages 31-34

PUBLIC HOLIDAYS

No instruction on the following dates:
Jan 3, Mar 25 & 28, May 2 & 30, Aug 29.
School is closed from Dec 24, 2005 to Jan 8, 2006.



THE SCHOOL

The school occupies a Victorian building with a garden on a quiet street in Hove, an exclusive residential area of Brighton. It is 5 minutes' walk from the beach and from Hove train station. Shops, coffee houses, pubs, restaurants

and a leisure centre are all nearby. **Leisure Programme:** The social programme includes parties and barbecues, quiz and games nights, nightclubs and discos, day and weekend trips to London and other parts of Britain and Europe. Activities such as golf and horse riding can also be arranged.

LSI COURSE PRICES IN UK £ – PRICES FOR TUITION ONLY

| LSI Courses | 1 week | 2 weeks | 3 weeks | 4 weeks | 6 weeks | 8 weeks | 10 weeks | 12 weeks | add. week |
|--|--------|---------|---------|---------|---------|---------|----------|-----------|-----------|
| STANDARD 20 (MORNING) | 185 | 325 | 465 | 605 | 885 | 1165 | 1445 | 1725 | 130 |
| STANDARD 20 (AFTERNOON) | 155 | 275 | 395 | 515 | 755 | 995 | | | |
| INTENSIVE 30/MEB | 250 | 420 | 590 | 760 | 1100 | 1440 | 1780 | 2120 | 160 |
| TOEFL/TOEIC/IELTS PREPARATION COURSE | | | | 760 | | 1440 | | 2120 | |
| PLUS COURSE SUPPLEMENT: 5 EXTRA ONE-TO-ONE LESSONS PER WEEK | | | | | | | | | 175 |
| PLUS COURSE SUPPLEMENT: 10 EXTRA ONE-TO-ONE LESSONS PER WEEK | | | | | | | | | 350 |
| LSI 20/30 CAMBRIDGE EXAM COURSES | | | | | | | 10 weeks | 1445/1780 | |
| | | | | | | | 12 weeks | 1725/2120 | |
| ISY-INTERNATIONAL SCHOOL YEAR | | | | | | | 12 weeks | 24 weeks | 36 weeks |
| INTERNATIONAL SCHOOL YEAR 20 LESSONS PER WEEK | | | | | | | 1725 | 2650 | 3740 |
| INTERNATIONAL SCHOOL YEAR 30 LESSONS PER WEEK | | | | | | | 2120 | 3070 | 4320 |

EXAMINATION FEES

| | |
|-----|------|
| PET | £ 60 |
| FCE | £ 95 |
| BEC | £ 95 |

ADDITIONAL FEES

| | |
|---------------------------------|-------|
| Registration fee | £ 50 |
| Placement fee – Work Experience | £ 400 |
| Airport transfers (optional): | |
| Heathrow – one way | £ 80 |
| Gatwick – one way | £ 45 |

ACCOMMODATION

Homestay per person, per week:
Twin room, B & B*/half board* £ 80/£ 100
Single room, B & B/half board £ 90/£ 110
Christmas supplement (Dec 25-Jan 8) per week: £ 20
* Only when two students book together for the same start date.
Self-catering accommodation Abbey Hotel (all year, subject to availability), per person, per week:
Single/double room £ 125/£ 100
Extra night Single/double room £ 25/£ 20
Hotel: 2, 3 and 4 star hotel prices available on request.

BRIGHTON – Only 50 minutes from London by train, Brighton is a vibrant city situated between the sea and the beautiful Sussex Downs.

Highlights
LSI BRIGHTON

LSI FAMILY COURSE –

In August, we run a course which enables you to combine a family holiday with learning English. Your children attend a summer camp in Brighton while you study at LSI.





GENERAL COURSES

STANDARD 20

- 20 lessons per week (1-50 weeks)
- 1 lesson: 50 minutes (4 lessons per day)
- 14 students max. per class
- Elementary to Advanced levels

INTENSIVE 30

- 30 lessons per week (1-50 weeks)
- 1 lesson: 50 minutes (6 lessons per day)
- 14 students max. per class
- Elementary to Advanced levels

PLUS COURSES

- 20/30 +5 or +10 individual lessons per week
- Elementary to Advanced levels

MEB - MODULAR ENGLISH FOR BUSINESS

- Afternoon option on LSI Intensive 30 course
- 14 students max. per class
- Intermediate to Advanced levels

Starting dates: each Monday
Beginners at London Central only

CAMBRIDGE EXAM COURSES

- First Certificate (FCE)
- Advanced (CAE)
- 30 lessons per week
- 10/12 weeks
- see page 8

Starting dates:
FCE & CAE 10 weeks: Jan 4
FCE & CAE 12 weeks: Mar 29, Sep 26
For examination dates, see page 5

IELTS, TOEFL & TOEIC PREPARATION

- 30 lessons per week
- Intermediate to Advanced levels
- 4/8/12 weeks
- see page 8

INTERNATIONAL SCHOOL YEAR

- 30 lessons per week
- Elementary to Upper Intermediate levels
- 12, 24 or 36 weeks

Starting dates: Jan 4, Feb 7, Mar 7, Apr 4, May 3, Jun 6, Jul 4, Aug 1, Sep 5, Oct 3, Nov 7, Dec 5
For examination dates, see page 5

YOUNG LEARNERS' COURSE

- see page 10

WORK EXPERIENCE

- see page 7

UNIVERSITY PLACEMENT

- see page 8

EXECUTIVE COURSES

ONE-TO-ONE 9 DAY COMPACT COURSE

- see pages 31-34

PUBLIC HOLIDAYS

No instruction on the following dates:
Jan 3, Mar 25 & 28, May 2 & 30, Aug 29.
School is closed from Dec 24, 2005 to Jan 8, 2006.



THE SCHOOL

LSI Cambridge is perfectly situated for enjoying this picturesque, ancient university town. The school

is in a quiet residential area, 15 minutes walk from the town centre. There is a comfortable lounge, a large garden for student use, and a learning centre with free internet access and self study materials.

Leisure Programme: The social programme includes barbecues, nightclubs and sports. There are popular day and weekend excursions to places such as London, Stonehenge and Stratford-Upon-Avon (Shakespeare's birthplace). Trips as far afield as Scotland or France can also be arranged.



CAMBRIDGE - Many of the colleges that comprise the university, with their amazing architecture and beautiful grounds, are open to the public, and there



are many traditional Cambridge pastimes to enjoy, such as spending an afternoon on the River Cam in a flat-bottomed boat called a punt.

LSI COURSE PRICES IN UK £ - PRICES FOR TUITION ONLY

| LSI Courses | 1 week | 2 weeks | 3 weeks | 4 weeks | 6 weeks | 8 weeks | 10 weeks | 12 weeks | add. week |
|--|--------|---------|---------|---------|---------|---------|-------------|-----------|-----------|
| STANDARD 20 | 185 | 325 | 465 | 605 | 885 | 1165 | 1445 | 1725 | 130 |
| INTENSIVE 30/MEB | 250 | 420 | 590 | 760 | 1100 | 1440 | 1780 | 2120 | 160 |
| TOEFL/TOEIC/IELTS PREPARATION COURSE | | | 760 | | | 1440 | | | 2120 |
| PLUS COURSE SUPPLEMENT: 5 EXTRA ONE-TO-ONE LESSONS PER WEEK | | | | | | | | | 175 |
| PLUS COURSE SUPPLEMENT: 10 EXTRA ONE-TO-ONE LESSONS PER WEEK | | | | | | | | | 350 |
| LSI 30 CAMBRIDGE EXAM COURSES | | | | | | | 10/12 weeks | 1780/2120 | |
| ISY-INTERNATIONAL SCHOOL YEAR | | | | | | | 12 weeks | 24 weeks | 36 weeks |
| INTERNATIONAL SCHOOL YEAR 30 LESSONS PER WEEK | | | | | | | 2120 | 3070 | 4320 |

EXAMINATION FEES

| | |
|-------|------|
| FCE | £ 95 |
| CAE | £ 95 |
| TOEIC | £ 60 |

ADDITIONAL FEES

| | |
|---------------------------------|-------|
| Registration fee | £ 50 |
| Placement fee - Work Experience | £ 400 |
| Airport transfers (optional): | |
| Heathrow - one way | £ 125 |
| Gatwick - one way | £ 135 |
| Stansted - one way | £ 65 |

ACCOMMODATION

Homestay per person, per week:
Twin room, B & B*/half board* £ 85/£ 105
Single room, B & B/half board £ 95/£ 115
Christmas supplement (Dec 25-Jan 8) per week: £ 20
* Only when two students book together for the same start date.

Residential accommodation
Anglia (Jun 26 - Aug 27), per week:
Single room, self-catering £ 145
Single room, bed & breakfast £ 185
Single room, half board £ 225
Centrepoint (Jun 11 - Sep 4), per week:
Single room, self-catering £ 110
Student Residence: prices on request, subject to availability.
Hotel: 2, 3 and 4 star hotel prices available on request.



LANGUAGE STUDIES INTERNATIONAL



LANGUAGE TRAINING FOR BUSINESS



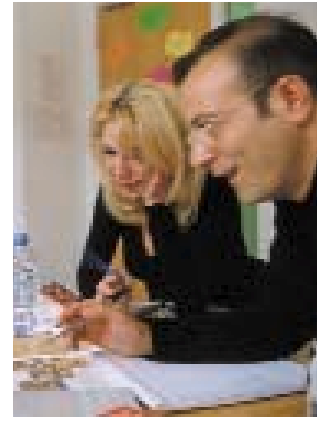
LSI

FOR PROFESSIONALS
AND EXECUTIVES

LANGUAGE STUDIES INTERNATIONAL



COURSES FOR PROFESSIONALS – LSI has **over 30 years’ experience** in professional training and specialised language courses. We offer a **wide range of courses, flexible scheduling and tailored course plans**. Whether you would rather learn in a group or individually, **we will design a programme to meet your needs**. Our experienced language trainers are fully conversant with contemporary teaching methods and skilled at assessing your individual needs. They will establish with you a detailed course plan, using their experience to help you achieve your objectives. We have successfully trained clients from a wide range of international companies and organisations, as well as individuals from many different professional fields.



ONE-TO-ONE

- 20, 30, 40, or 50 individual lessons per week
- Beginner to Advanced levels
- 1 lesson: 45 minutes (in the USA 50 minutes)
- Courses begin: every Monday

Individual tuition is the fastest way to learn a language. Whether you need general or specialised language, each course is entirely tailored to your needs and adapted to your rate of progress. It is the perfect option for those who have specific targets or limited time. It is particularly convenient for professionals and executives preparing for a trip abroad, or negotiations and presentations in a foreign language. Our reputation for adaptability and flexibility means that your trainers will always respond to any further requirements you may have.

“Learning in a small group is very effective. It is a good opportunity to talk a lot because of the small group size. Management issues are dealt with and many useful topics concerning work. It is very interesting to share experience with people of the same level and common interests. It is a very dynamic situation with the teacher and the topics discussed are quite flexible.”

**Maria Alice Fromtini, Assistant Manager
São Paulo, Brazil**

9 DAY COMPACT COURSE

- 82 or 92 individual lessons
- 9 consecutive days
- Courses begin: every Saturday

For those with exacting needs which must be met in a short space of time. Requiring just one week away from the office, this course is ideal for busy professionals and executives who need to prepare for presentations and meetings abroad.

The course includes lunch with your teacher, giving you the opportunity to work on your social language – also vital in a business situation.

MINI GROUP – ENGLISH FOR BUSINESS

- 30 lessons per week (in London 20, 30 or 40 lessons)
- Participants: maximum 6
- Intermediate to Advanced levels
- Course length: 1-4 weeks
- 1 lesson: 45 minutes (in the USA 50 minutes)
- Courses begin: every Monday

This course combines general grammar and skills development with an in-depth focus on the language of business. The small, intensive group provides the ideal opportunity to practise negotiation, presentation and meeting skills in a realistic situation.

Intercultural awareness plays an important role in understanding the nature of global business and communication and the international mix of our courses and experience of our teachers provides the perfect forum in which to gain this valuable knowledge.

The 20 and 30 lesson courses are recommended for those who wish to combine group tuition with a more intensive One-to-One programme.

MINI GROUP PLUS ONE-TO-ONE

Designed to complement the Mini Group for Business course, Plus courses are individual lessons flexibly arranged when you need extra help on a specific area or want to increase your rate of progress.

Sample course plans:

- 40 Mini Group lessons + 5 One-to-One lessons per week
- 30 Mini Group lessons + 10 One-to-One lessons per week
- 20 Mini Group lessons + 20 One-to-One lessons per week
- 2 weeks Mini Group (40 lessons per week) + 1 week One-to-One (40 lessons per week)

“I have been very impressed with the quality of the instructors and the individual tutoring LSI have provided.”

**Lynda Rathbone
Global Internet Group Director
Cable and Wireless**



LSI EXECUTIVE CENTRES – The LSI executive centres in London Central, San Francisco/Berkeley, Boston, Vancouver, Toronto and Auckland offer One-to-One, 9 Day Compact and Mini Group courses. Other LSI language centres offer a selection of executive courses as listed below.

LONDON CENTRAL – ENGLAND

- One-to-One
- 9 Day Compact Course
- Mini Group – English for Business
- Mini Group Plus 5

LONDON HAMPSTEAD

- One-to-One

BRIGHTON – ENGLAND

- One-to-One
- 9 Day Compact Course

CAMBRIDGE – ENGLAND

- One-to-One
- 9 Day Compact Course

DUBLIN – IRELAND

- One-to-One

S.F./BERKELEY – USA

- One-to-One
- 9 Day Compact Course
- Mini Group – English for Business
- Mini Group Plus 5

SAN DIEGO – USA

- One-to-One
- 9 Day Compact Course

BOSTON – USA

- One-to-One
- 9 Day Compact Course
- Mini Group – English for Business
- Mini Group Plus 5

NEW YORK – USA

- One-to-One

VANCOUVER – CANADA

- One-to-One
- 9 Day Compact Course
- Mini Group – English for Business
- Mini Group Plus 5

TORONTO – CANADA

- One-to-One
- 9 Day Compact Course
- Mini Group – English for Business
- Mini Group Plus 5

BRISBANE – AUSTRALIA

- One-to-One

AUCKLAND – NEW ZEALAND

- One-to-One
- 9 Day Compact Course
- Mini Group – English for Business
- Mini Group Plus 5

CHRISTCHURCH – NEW ZEALAND

- One-to-One

SLIEMA – MALTA

- One-to-One

MADRID – SPAIN

- One-to-One
- 9 Day Compact Course

SAN JOSÉ/CORONADO – COSTA RICA

- One-to-One

PARIS – FRANCE

- One-to-One
- 9 Day Compact Course

ZÜRICH – SWITZERLAND

- One-to-One
- 9 Day Compact Course

FRANKFURT – GERMANY

- One-to-One
- 9 Day Compact Course

“The Business English (Mini Group) course is excellently designed for students who aim to improve their use of English in a business or professional situation. The course has been tailor-made to suit my requirements as far as possible. I really enjoyed my stay at LSI.”

Adrian Lau, Hong Kong

“I enjoyed all my lessons at LSI. With their help, I was able to improve my English conversation very much.”

Angelo Mozardo, Mechanical Engineer, Brazil

ONE-TO-ONE COURSES

| LSI Language Centre | 5 lessons per week | 10 lessons per week | 20 lessons per week | 30 lessons per week | 40 lessons per week | 50 lessons per week |
|--|--------------------|---------------------|---------------------|---------------------|---------------------|---------------------|
| London Central, London Hampstead*, Brighton, Cambridge | £ 175 | £ 350 | £ 700 | £ 1.050 | £ 1.400 | £ 1.750 |
| Dublin | € 260 | € 520 | € 1.040 | € 1.560 | € 2.080 | € 2.600 |
| SF/Berkeley, San Diego, Boston, New York** | US\$ 280 | US\$ 560 | US\$ 1120 | US\$ 1680 | US\$ 2240 | US\$ 2800 |
| Vancouver, Toronto | CD\$ 345 | CD\$ 690 | CD\$ 1380 | CD\$ 2070 | CD\$ 2760 | CD\$ 3450 |
| Brisbane | AU\$ 325 | AU\$ 650 | AU\$ 1300 | AU\$ 1950 | AU\$ 2600 | AU\$ 3250 |
| Auckland, Christchurch | NZ\$ 350 | NZ\$ 700 | NZ\$ 1400 | NZ\$ 2100 | NZ\$ 2800 | NZ\$ 3500 |
| Siema (General/Special) | - | - | Lm145/163 | Lm205/233 | - | - |
| Paris | € 300 | € 600 | € 1.200 | € 1.800 | € 2.400 | € 3.000 |
| Madrid | € 175 | € 350 | € 700 | € 1.050 | € 1.400 | € 1.750 |
| San José/Coronado | - | - | US\$ 420 | US\$ 630 | US\$ 840 | - |
| Frankfurt | € 225 | € 450 | € 900 | € 1.350 | € 1.800 | € 2.250 |
| Zürich | Sfr. 375 | Sfr. 750 | Sfr. 1500 | Sfr. 2250 | Sfr. 3000 | Sfr. 3750 |

MINI GROUP - ENGLISH FOR BUSINESS

| LSI Language Centre | lessons per week | 1 week | 2 weeks | 3 weeks | 4 weeks | additional week |
|---------------------|------------------|----------|-----------|-----------|-----------|-----------------|
| London Central | 40 lessons | £ 560 | £ 1.035 | £ 1.510 | £ 1.985 | £475 |
| | 30 lessons | £ 450 | £ 830 | £ 1.210 | £ 1.590 | £380 |
| | 20 lessons | £ 340 | £ 625 | £ 910 | £ 1.195 | £285 |
| SF/Berkeley, Boston | 30 lessons | US\$ 990 | US\$ 1570 | US\$ 2150 | US\$ 2730 | US\$ 580 |
| Vancouver, Toronto | 30 lessons | CD\$ 950 | CD\$ 1595 | CD\$ 2240 | CD\$ 2885 | CD\$ 645 |
| Auckland | 30 lessons | NZ\$ 925 | NZ\$ 1700 | NZ\$ 2475 | NZ\$ 3250 | NZ\$ 775 |

9 DAY COMPACT COURSES

| LSI Language Centre | 82 lessons | 92 lessons |
|-------------------------------------|------------|------------|
| London Central, Brighton, Cambridge | £ 2.870 | £ 3.220 |
| SF/Berkeley, San Diego, Boston | US\$ 4590 | US\$ 5150 |
| Vancouver, Toronto | CD\$ 5655 | CD\$ 6345 |
| Auckland | NZ\$ 5740 | NZ\$ 6440 |
| Paris | € 4.920 | € 5.520 |
| Madrid | € 2.870 | € 3.220 |
| Frankfurt | € 3.690 | € 4.140 |
| Zürich | Sfr. 6150 | Sfr. 6900 |

*20/30 lessons only **50 lessons not available. All prices for tuition only.

REGISTRATION FEES

| | |
|--|----------|
| London Central, London Hampstead Brighton, Cambridge | £ 50 |
| Dublin | € 65 |
| SF/Berkeley, San Diego, Boston, New York | US\$ 100 |
| Vancouver, Toronto | CD\$ 100 |
| Brisbane | AU\$ 150 |
| Auckland, Christchurch | NZ\$ 100 |
| Siema | Lm 3 |
| Paris | € 65 |
| Madrid | € 65 |
| Frankfurt | € 65 |
| Zürich | Sfr. 100 |

ACCOMMODATION PLACEMENT FEES

| | |
|----------------------------------|----------|
| Dublin, Madrid, Paris, Frankfurt | € 40 |
| Zürich | Sfr. 75 |
| Brisbane | AU\$ 190 |
| Auckland, Christchurch | NZ\$ 185 |

ACCOMMODATION

| | |
|---|----------------|
| Homestay accommodation - Single room B & B/half board per person, per week: | |
| London Central, Hampstead (Executive supp. £ 20/£ 25, Private Bathroom £ 50, Zone 2 supp. £ 20) | £ 105/£ 130 |
| Brighton | £ 90/£ 110 |
| Cambridge | £ 95/£ 115 |
| Dublin | € 120/€ 155 |
| (Executive supp. € 20/€ 25) | |
| SF/Berkeley | US\$ 160/235* |
| San Diego | US\$ 160/210 |
| Boston | US\$ 170*/230* |
| (*add US\$ 30 p.w. Jul 26-Sep 3) | |
| New York (B & B in Manhattan) | US\$ 483 |
| Vancouver | CD\$ 205/235 |
| Toronto | CD\$ 205/235 |
| Brisbane | AU\$ 130/190 |
| Auckland, Christchurch | NZ\$ 160/190 |
| Siema (half board) | Lm 53-67 |
| Paris (half board) | € 231 |
| Madrid | € 126/€ 180 |
| San José/Coronado (half board) | US\$ 131 |
| Frankfurt | € 155/€ 220 |
| Zürich | Sfr. 230/345 |

Hotels with 3, 4 or 5 stars on request.

"As a Frankfurt law firm with a focus on business and company clients, we deal with a lot of international issues. The executive course at LSI was very helpful in further professionalising our legal services on an international level. The performance of the teachers, the concept of the course and the reading material was very professional and met my expectations in every way."

Volker Marquart
 Founder and Partner of Marquart Beck Kern Gieseler

"Our tutor's patient approach makes learning an enjoyable challenge."

Emily Pearl, HR & Office Manager
 DnB Asset Management

"I'm having great fun studying with LSI. The service is professional and my tutor is flexible - and in my case very patient!"

Bruce Dickinson
 MCPS-PRS Alliance

"In my experience, LSI makes sure a student's needs are met effectively when arranging One-to-One courses."

Rachel Stabb
 TV Journalist and Manager

SOME OF OUR CLIENTS

FINANCIAL

American Express
 Credit Suisse
 Deutsche Bank
 Goldman Sachs
 JP Morgan Chase
 Lloyds TSB
 Merrill Lynch

CONSULTANCY

Cap Gemini Ernst & Young
 KPMG

TECHNOLOGY

Bosch
 Casio
 Dell
 Ericsson
 Hewlett-Packard
 Logica
 Samsung
 Siemens
 SMEG

TELECOMMUNICATIONS

British Telecom
 Cable and Wireless
 Nortel Networks
 Orange Communications

MEDIA

BBC TV
 EMI Records
 Reuters

AUTOMOTIVE ENGINEERING

Daimler Chrysler
 Mercedes Benz
 Mitsubishi
 Toyota

PHARMACEUTICALS AND HEALTHCARE

Aventis
 Pfizer
 Johnson & Johnson

TRANSPORTATION

Deutsche Bahn
 Lufthansa Cargo

OIL

Shell

FOODS

Cadbury Schweppes
 Cadbury Trebor Bassett
 Coca Cola
 Danone
 Heineken
 Nestlé
 Unilever

RETAIL

H & M Hennes & Mauritz
 Gucci
 Kookaï

ENTERTAINMENT

The Walt Disney Company