



## General and Examination Courses

*Westcroft  
Square*

## Welcome

Our courses have been developed over many years. Our great experience – since 1912 – ensures that we offer you highly practical training programmes that really bring results.

Our clients at Westcroft Square come from a variety of backgrounds. Some need English for work, some for study, some for leisure. But they all want to improve their practical English language skills and we take pleasure in helping each person to meet their different personal goals.



People studying with us are often a little older than you will find in many other English language schools. This gives us that special atmosphere you get when serious people are dedicated to achieving a common aim, sharing their experience and supporting each other.

A course in London is a great opportunity to learn and have fun at the same time, in a great world city. We look forward to sharing it with you soon.



Timothy Blake, Managing Director

## Location

**Westcroft Square** is a very pleasant residential area between **Hammersmith** and **Chiswick** – close to the centre of London.

Many of our homestay families are in this area, and the school is just 3 minutes' walk from Stamford Brook underground station – the train takes less than 20 minutes from there to central London.



## What to expect when studying here

All our courses are **designed for mature and motivated adults**, so you can be sure that the people you will be studying with will have the same desire as you to learn as much as possible as quickly as possible. It can be quite hard work studying here – but it's enjoyable work, and you will be amazed at how quickly you can improve.

Our team of **dedicated staff** are **highly qualified** and **very experienced**. You will benefit greatly from their **enthusiasm** and **professionalism**. And as you might expect, our facilities are of a very high standard – we have everything you will need to make the most of your time with us.

99% of our students say they would recommend the school to a friend or colleague – the most important test of all.



## Key facts about us



Established in 1912, we are the **oldest accredited English language school in the world**. This means that we have **unrivalled experience** in teaching English.



We offer a great location. By studying with us, you will be able to enjoy the benefits of being in an **excellent part of London**, only 20 minutes from the heart of the city.



A good mix of nationalities is important. On average, we have **over 40 nationalities** every year studying with us in our Westcroft Square centre.



60 mins

How long is an hour? We think it's 60 minutes! Please don't forget that all our quoted 'hours' are a **full 60 minutes**. When choosing a school, make sure you find out how much actual contact time you will have.

If you stay in homestay accommodation, or participate in our evening programme, then contact time will be considerably greater.

## London

London hardly needs any introduction, but it really is a wonderfully exciting, diverse city with something for everyone. Although it is very big, you may be surprised at how green it is – the air quality is far better than many other large cities around the world.

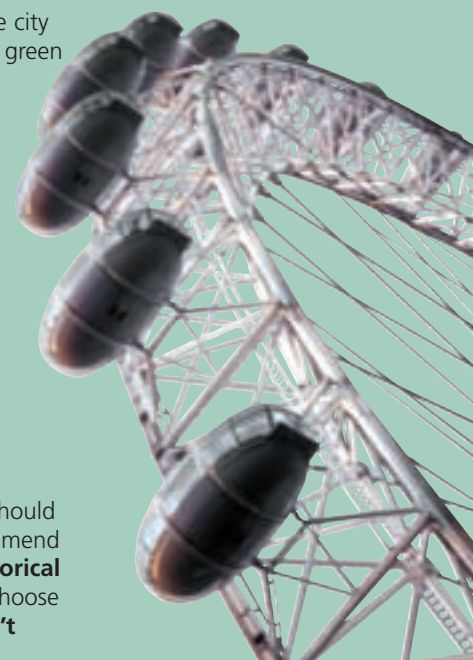
Think of all the wonderful things you can do here:

- Visit our world-class galleries and museums – most of them are free
- Eat in the thousands of excellent restaurants offering every cuisine imaginable
- Enjoy an evening at a musical, concert, theatre or club
- Walk through our huge and beautiful parks

...or just sit in a café or in one of London's many famous pubs and watch people going about their business – after all, this is one of the world's most fascinating and culturally diverse cities. Whatever you want to do in your free time, we will be happy to book tickets or a restaurant for you, or tell you about our favourite parts of London.

### Explore beyond London





London is an attractive and fascinating city, but to get a feel for this country, you should also take the time to travel beyond London. If you have a weekend free, we recommend that you **explore Britain's beautiful countryside** or **visit one of the many historical towns** – many are no more than an hour or two from London. We can help you choose an organised tour, book train tickets or rent a car – whatever you want to do, **don't forget that we're here to help you make the most of your time with us.**



# Intensive General English

An all-round practical English course for mature adults of any age

## Factcheck

-  Group size maximum 12
-  Minimum age 18  
Average age 29
-  22 hours per week  
09.30 – 16.00  
Monday – Friday, except Wednesday  
09.30 – 12.45
-  Start any Monday except last Monday of a course block  
  
Minimum registration 2 weeks – no maximum

## Who is the course for?

This intensive course is for anyone who needs to improve their English language skills for general use. The minimum age on the course is 18, although most participants are aged over 25. The course is lively and fun, but, whatever their age, all participants are serious about improving their practical English language skills as quickly as possible.



## Course content

The course is for people with a need to improve their English in general, so **the content is wide-ranging, comprehensive and very practical.** Group sizes are small (maximum 12) – so joining a course here is about **participating.** You will find yourself actively contributing to the group throughout your stay with us.

You can choose from **4 key areas** during your time on this course:

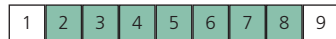
- General English
- General English + English for Culture and Communication
- General English + English for Work
- General English + English for Study

The day is split into two parts – in the morning you will develop your general English language skills, focusing on **listening, speaking, reading and writing** skills as well as covering **grammar and vocabulary.**

In the afternoon, we offer a range of **options** for you to choose from. You will have the opportunity to study a number of **different topics** within those options – the chart opposite shows how this works.

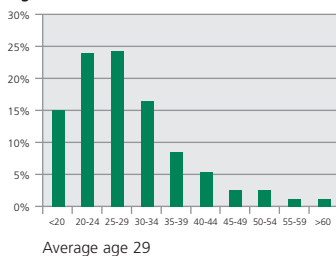
On Wednesday afternoons, there are no lessons. We always organise an interesting activity somewhere in London with a member of the school staff, or you may prefer to enjoy London independently or use the learning facilities in the school.

## Level



See inside back flap for more details

## Age Profile on the Intensive General Course



**It's a challenging course, exactly what I was looking for! The teacher tailored her lessons to all the students' individual needs.**

*Matthias-Lorenz Thomann, Switzerland*





This table shows you how you will spend your day:

Group class	Intensive General English			
09.30 – 12.45	<i>Learning activities include:</i> <ul style="list-style-type: none"> <li>■ active speaking and listening</li> <li>■ grammar and vocabulary</li> <li>■ writing diaries, letters and reports</li> <li>■ listening to tapes and watching videos</li> <li>■ discussion on various topics</li> <li>■ role-play activities</li> </ul>			
LUNCH				
Options	Language Skills Reinforcement	English for Culture and Communication	English for Work	English for Study*
13.45 – 16.00 <small>No afternoon classes on Wednesday</small>	<ul style="list-style-type: none"> <li>● Grammar &amp; Speaking</li> <li>● Vocabulary Expansion</li> <li>● Pronunciation &amp; Listening</li> <li>● English in Social Situations</li> </ul>	<ul style="list-style-type: none"> <li>● Media and News &amp; Views</li> <li>● British Life</li> <li>● Film, Video &amp; Drama</li> <li>● Literature and the Arts</li> </ul>	<ul style="list-style-type: none"> <li>● Business/IT</li> <li>● Practical writing</li> <li>● Social &amp; Intercultural English</li> <li>● English for Travel Tourism &amp; Hospitality</li> </ul>	<ul style="list-style-type: none"> <li>● Study skills</li> <li>● Exam skills</li> <li>● IELTS</li> <li>● English for Academic Purposes (Reading, writing, listening and speaking)</li> </ul>
Level	2-8	3-8	4-8	4-8

\*This option includes the work formerly included on our ISSUE course

### A note about how the Options system works

Each option runs for the length of a **course block** (usually 4 weeks or, in the summer, 2 weeks – see our Dates and Fees leaflet or our website for the dates of each course). You can choose your preferred option when you arrive in the school.

You will cover a variety of topics within your option. You may not cover all of them – the topics available depend on preference, language level, place availability and your course dates. We will advise you about this when you start the course.

If you are staying for several months, you will have a chance to choose a new option every month. If you like, you can stay in the option selected (for a maximum of 3 months except for English for Study). You can discuss this with us when you are in the school.

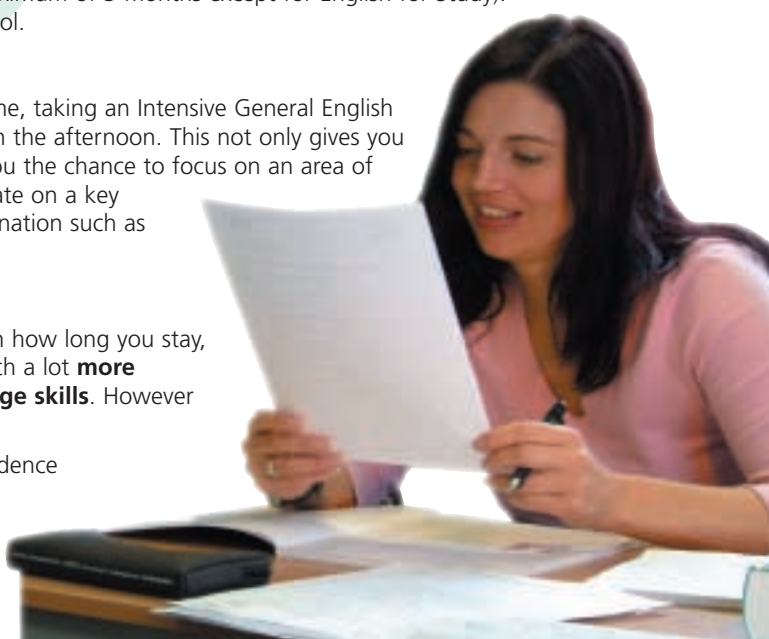
### Combination course

Some people choose to take a combination programme, taking an Intensive General English group course in the morning, then individual tuition in the afternoon. This not only gives you the benefit of working with a group, but also gives you the chance to focus on an area of your choice – for example, you may wish to concentrate on a key language skill or perhaps on preparation for an examination such as GMAT, TOEIC, TOEFL or IELTS.

### Course benefits

The progress you will make on this course depends on how long you stay, but, even on a short programme, you will leave us with a lot **more confidence** and some very **practical English language skills**. However long you stay, you can expect the following benefits:





- Use English more effectively and with greater confidence
- Speak more accurately and fluently
- Use a wider vocabulary
- Understand what you read and hear more easily
- Socialise more easily



# Examination courses

## Achieving exam success

### Factcheck

-  Maximum 12 per group
-  Minimum age 18  
Average age 26
-  24 hours per week  
09.00 – 16.00  
60 mins  
Monday – Friday
-  Course length  
Cambridge: 6, 7 or 8 weeks  
IELTS: 2 weeks

### Cambridge FCE and CAE

The Cambridge examinations are still perhaps the best-known British examinations for international students and we have special programmes to prepare for **First Certificate** (FCE) and **Cambridge Advanced** (CAE).

The syllabus of these courses closely follows the requirements of the examinations, guaranteeing you the best possible chance of passing with a good grade.

The courses are relatively short and intensive so we advise you, if possible, to take a month on the Intensive General course immediately before you take one. The Study Option on that course will be particularly useful to help you prepare for the Cambridge and any other examination courses.



### Cambridge BEC Vantage and BEC Higher

Twice each year we offer BEC Vantage preparation as **an extra add-on hour per day** for anyone taking the First Certificate course. This amounts to 30 hours of special preparation at a modest additional cost.

Cambridge BEC Higher courses are offered for people participating on our **Young Business English** course at Holland Park Gardens.

Level

1	2	3	4	5	6	7	8	9
---	---	---	---	---	---	---	---	---

See inside back flap for more details

### IELTS courses

If you are planning to enter a British university, you will almost certainly need to show your language ability by taking the IELTS test. Preparation for IELTS is a part of the **Study Option** on our Intensive General English course. However, you may not have long to prepare, in which case either a General combination course or this **intensive short course** may be ideal for you.

### Course benefits

The benefits you can expect from taking our Examination courses include:

- An excellent chance of examination success
- Handle language more effectively and with greater confidence
- Speak and write more accurately and fluently
- Use a wider vocabulary
- Socialise more easily

**/// This course has given me all that I was looking for: to improve my English knowledge in a serious and friendly atmosphere. ///**


*Enric Rosich Palomas,  
Spain*





# 'Flying Start' Individual Tuition

Personalised English language training

## Factcheck

 Any Level of English – but especially to help you reach the level required to join a group course

 Usually a minimum of 15 hours per week

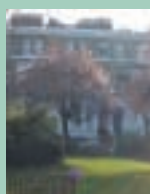
 Spend up to 25% of your total stay in the school on Individual Tuition. Minimum 1 week



Level

1	2	3	4	5	6	7	8	9
---	---	---	---	---	---	---	---	---

See inside back flap for more details



## Typical 'Flying Start' course participants

Flying Start is a programme of Individual Tuition at a reduced price for people who are taking a long course with us.

There are a number of reasons why people choose Flying Start individual tuition. They may not have the language level suitable to join a group course, their dates may not fit with our course blocks, or they may simply want to accelerate their progress before joining a group course. Whatever your reasons for choosing Flying Start, your trainer will be able to focus 100% on your needs and structure the content to suit you.

Flying start is only available for people whose total stay in the school is 18 weeks or more, and is limited to 25% of their time with us.

 [www.londonschool.com/general/flying.htm](http://www.londonschool.com/general/flying.htm)

## 'Standard' Individual Tuition

You can also take Individual Tuition without needing to take a longer course. You can do this at any time you choose and for as long as you choose, although the cost is higher than for Flying Start. The training may take place at our Holland Park Gardens centre and offers a **flexible, tailored programme**. For more information, call us on +44 20 7605 4142 or visit our website at:

 [www.londonschool.com/business/tuition.htm](http://www.londonschool.com/business/tuition.htm)

**My stay was a success. The people at The London School of English managed to give me confidence, and that is invaluable.**

*Marie-Helene Thiery,  
France*

## Combination Courses

The best of both worlds

You can take our Intensive General English as a combination course. You will spend half your day in a group and the other half of the day – normally 3 hours – with your 1:1 trainer, focusing on your own particular areas of need. Many people do this in order to focus on an area of particular interest, or to prepare for an examination such as IELTS, GMAT, TOEIC or TOEFL.



 [www.londonschool.com/general/ecc.htm](http://www.londonschool.com/general/ecc.htm)

## Accommodation

For most people, the choice of accommodation is extremely important. We understand this and offer a full range including homestay, university residences, hotels and apartments.

Most people choose homestay because it offers:

- A comfortable and relaxing living environment
- An opportunity to use your English with friendly hosts
- Outstanding value for money
- Accommodation in excellent residential areas close to the school and to the centre of London
- A chance to experience British culture in the home



### Homestay

The school is in the high-quality residential area of Chiswick – just 20 minutes by public transport from the centre of London. It is in transport Zone 2, and so is most of our accommodation, which means that you never have far to travel to the school. Almost half of our homestay accommodation is within 20 minutes' walk of the school; the maximum travelling time between homestay and school is 30 minutes.

My host family is very friendly and kind. I really enjoy staying with the family.

*Kana Takahashi, Japan*

We choose our homestay hosts carefully, as our clients expect the same high standards from their accommodation as they do from the school. We visit every family regularly and know them well. There are two types of homestay accommodation:

### Silver homestay

- A high standard of accommodation in clean, comfortable homes
- Friendly, welcoming hosts
- Accommodation within easy reach of the school – either by public transport or a walk
- A choice of meal options (see our Dates and Fees leaflet)

### Gold homestay

In addition to the above, Gold homestay offers a **private bathroom**. The availability of Gold homestay is limited, with preference given to short-stay guests.

### Other accommodation options

We know that homestay accommodation doesn't suit everyone, so we also offer a placement service for:

- University Residences (at certain times of the year)
- Hotels
- Executive Residences
- Apartments
- Serviced apartments

Whatever your requirements, please let us know and we will do our best to find something suitable.





## Evening and weekend programme

As our courses are intensive, it is important that you also take the time to relax and enjoy yourself – and make the most of this exciting city, which offers something for everyone!

We organise events on several evenings every week and on Wednesday afternoons (when there are no lessons on the Intensive General English course). Typical events include:

- Social events in the school
- Walking tours
- Traditional pub tours
- Boat trips on the river Thames
- Restaurant evenings

We don't charge extra for these events – you just pay for your own entrance tickets, food and drink if you want them. We can also help you organise your own evening programme.

You can also choose from a number of weekend trips to discover the beautiful countryside and towns outside London, to give you a chance to experience England outside the capital city.



## Facilities and Services

We provide excellent technical facilities free of charge within the school, including:

- High-speed, broadband internet access in our dedicated computer room
- Laptop connection through our wireless, LAN or dial-up facilities
- Script support in all major non-European languages
- Language laboratory
- Listening library and computer assisted language-learning exercises
- Audio and video facilities in every classroom

Our student lounge offers a stylish, comfortable place for students to meet each other and chat. A good range of drinks and snacks are available, including hot and cold food at lunchtime.

### Other services include:

- Optional airport pick up and drop off service
- Currency exchange
- Insurance
- Welfare service including Japanese, Chinese and Korean advisers

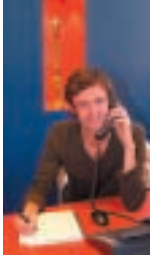


**One of the best schools to learn English quickly. Many facilities and friendly people. Just great. //**

*Paloma Lopez Medina,  
Spain*

## Contacting us

Whether you need more information or are ready to book a course, here's what to do next:



### "I still have some questions before making a decision."

We are here to help you, not to pressure you, so feel free to ring one of our advisers to discuss your needs further. You can contact us as follows:

By phone:	+44 20 7605 4142 (Monday-Friday 08.30-17.30 UK time)
By e-mail:	info@londonschool.com
Visit the website:	www.londonschool.com

### "I'm ready to book a course."

Great! Here are the different ways you can do this:

- Online via the web: [www.londonschool.com/booknow.htm](http://www.londonschool.com/booknow.htm)
- By calling us on +44 20 7605 4142 – we will tell you what we need to know
- By sending an email to [clients@londonschool.com](mailto:clients@londonschool.com). Please include the following information:
  - Your name, age and nationality
  - Contact email address and phone number
  - The course you want to book and your preferred course dates
- By contacting an educational agent in your market – visit our website for more information.

Wonderful.  
Teachers are  
perfect and  
everyone is kind.

*Nam Yoon Hwang,  
Korea*



 Telephone hotline: +44 20 7605 4142

## How to get to the school

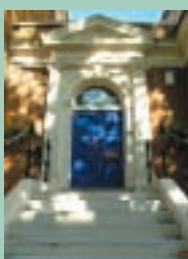


**By underground:** Stamford Brook station is on the District (green) Line. Turn right at the station exit and then turn left at the main road into King Street. Westcroft Square is the first turning on the left.

**By bus:** Number 267 from Hammersmith station or Number 237 from Shepherd's Bush.

## Our other centres

Different people may have different needs and preferences when it comes to language learning. For this reason, The London School of English Group offers a choice of language schools – each with its own distinctive character. By being a part of The London School of English Group, each centre offers a guarantee of the highest quality language training.



### Holland Park Gardens

This is our dedicated Business and Professional centre offering a wide range of courses for adults, including:

- English for Business
- English for Lawyers
- Other Specialist Courses for Professionals including:  
Human Resources, Bankers, Secretaries, Public officials
- Courses for Young Professionals
- Individual Tuition and Combination courses

For more information about courses at Holland Park Gardens, please contact us:

☎ +44 20 7605 4142   info@londonschool.com   www.londonschool.com



### Canterbury Language Training

Canterbury Language Training, our centre in the heart of historic Canterbury, offers the highest professional standards in training but at the same time limits intake to offer a very personal service.

CLT specialises in communication skills training for the corporate and professional sectors and offers training in micro groups (max 4), one to one and combination programmes.

For more information, please contact Maureen Gough:

☎ +44 1227 760000   info@clt.com   www.clt.com



### Nordic Region - Stockholm

Our training centre in Stockholm is very well established with strong links to both the public and private sectors in Sweden and the Nordic Region.

We offer a range of programmes tailored to local clients' precise needs.

For more information, please contact our Stockholm office:

☎ +46 8 5999 4000   info@londonschool.se   www.londonschool.se

## Level Scale

Level	LSE Class	Description	CEF*
9	Advanced	I can speak fluently and understand completely.	C2
8	Advanced	I speak and understand very well but sometimes have problems with unfamiliar situations and vocabulary.	C1
7	Pre-advanced	I speak and understand well but still make mistakes and fail to make myself understood occasionally.	B2
6	Upper Intermediate	I can communicate without much difficulty but still make quite a lot of mistakes and misunderstand sometimes.	B2
5	Intermediate	I can speak and understand reasonably well and can use basic tenses but have problems with more complex grammar and vocabulary.	B1
4	Low Intermediate	I can make simple sentences and can understand the main points of a conversation but need much more vocabulary.	B1
3	Pre-intermediate	I can communicate simply and understand in familiar situations, but only with some difficulty.	A2
2	Elementary	I can say and understand a few things in English.	A1
1	Beginner	I do not speak any English.	

The school's level scale matches IELTS. When a student has finished work at a level s/he should achieve this score on an IELTS test.

\*Common European Framework of Reference for Languages of the Council of Europe

## Course levels

Flying Start	1-8
Intensive General Course	2-8
IELTS	4-6
BEC Vantage	5-6
Cambridge First Certificate Examination Courses (FCE)	5-6
Cambridge Advanced Examination Courses (CAE)	7-8

## Official Accreditation



The school is Accredited by the British Council for the teaching of English as a Foreign Language. To obtain accreditation we must comply with strict regulations relating to school premises and facilities, teacher qualifications, teaching quality, administration and welfare. We are regularly visited by British Council inspectors.



The School is a founder member of English UK, the national body representing all Accredited language schools in Britain, and follows its Code of Practice.



A member of Quality English, the organisation of leading, independent English Language Schools.



Established in 1983, the International Association of Language Centres is an accrediting and marketing association for private, independent language schools that specialise in teaching the language of their country to students from abroad. IALC member schools must adhere to strict quality standards and are committed to professionalism and excellence in all aspects of service.

## The London School of English

15 Holland Park Gardens  
London W14 8DZ

☎ + 44 20 7605 4123  
Fax.: + 44 20 7605 4190  
info@londonschool.com  
www.londonschool.com

Managing Director: Timothy Blake

## Canterbury

### Canterbury Language Training

73 Castle Street  
Canterbury  
CB1 2QD

☎ + 44 1227 760000  
Fax.: + 44 1227 764400  
office@clt.com  
www.clt.com

Managing Director: Maureen Gough

## Stockholm

### The London School of English

Box 16423  
SE – 103 27 Stockholm

Visiting: Jakobs Torg 3

☎ + 46 8 5999 4000  
Fax.: + 46 8 5999 4001  
info@londonschool.se  
www.londonschool.se

Managing Director: Jennifer Swallow-Dahlin