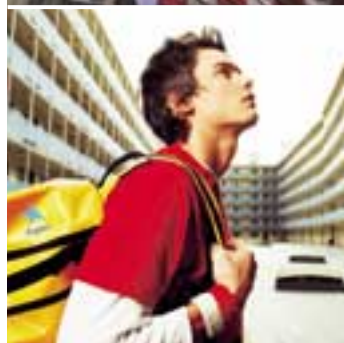




ASPECT ENGLISH LANGUAGE COURSES WORLDWIDE

» 2005



UK » IRELAND » USA » CANADA » AUSTRALIA » NEW ZEALAND » MALTA » SOUTH AFRICA

» CONTENTS

- 4 Aspect: Why Choose Us?
- 6 Aspect People
- 7 Aspect Teaching
- 8 Aspect Accommodation
- 9 Aspect Social Activities

» ASPECT COURSE OPTIONS

- 10 Progress and Achievements
- 12 General English Courses
- 13 English for Academic Purposes Courses
- 14 Pathways to Work
- 16 Long-term Programmes
- 20 Pathways to University

» ASPECT SCHOOLS WORLDWIDE

» UK & IRELAND

- 22 London
- 24 Cambridge
- 26 Oxford
- 28 Bournemouth
- 30 Edinburgh
- 32 Dublin
- 34 Torbay
- » **USA**
- 35 Fort Lauderdale
- 36 Santa Barbara
- 38 Los Angeles
- 40 San Francisco

- 42 San Diego
- 44 Chicago
- 46 Boston
- 48 New York
- 50 Orlando

» CANADA

- 52 Toronto
- 54 Vancouver

» AUSTRALIA

- 56 Sydney
- 58 Perth

» NEW ZEALAND

- 60 Auckland
- 62 Christchurch

» MALTA

- 64 Sliema

» SOUTH AFRICA

- 65 Cape Town

» HOW TO ENROL

- 66 Terms and Conditions
- 67 Enrolment Form



WELCOME TO **ASPECT**

In today's competitive global environment, fluency in English is an essential tool for success. Whether you have set your sights on gaining a university education in the English-speaking world, a place in one of your country's own academic institutions or you want to get ahead in your career, a high quality language programme is a vital investment for your future.

Whatever your reason for investing in an international education, you'll need to choose an organisation you can trust. Aspect has more than 35 years of experience in international student travel, first-class schools in some of the world's most desirable destinations, including a sensational new school in New York, and a team of dedicated, friendly staff to provide you with an experience that you'll value and remember for years to come.

We sincerely hope to welcome you onto an Aspect programme this year.

David Jones

David Jones, Chief Executive



ASPECT WHY CHOOSE US?

CHOICE OF WORLDWIDE LOCATIONS

Australia and New Zealand, England, Scotland and Ireland, the USA and Canada... from the glamour of California to the excitement of London and the lifestyle of Sydney, Aspect's 24 schools are in some of the world's most desirable locations.

35 YEARS OF TEACHING EXPERIENCE

Aspect has over 35 years of experience in the field of language study abroad. There's no doubt that our teachers are our greatest resource. Using tried and tested teaching methods and an approach which is always positive and inspiring, they will ensure you make maximum language progress during your course.

GREAT CUSTOMER SERVICE

Whether it's advice on what to pack in your suitcase, a question on the cost of travel in Sydney or guidance on getting into a British university, our skilled and friendly staff will do all they can to prepare you and assist you throughout your programme.

COURSES OF ALL TYPES, FOR ALL LEVELS

Aspect schools offer a full range of programmes at all levels, from beginner to advanced. Courses start every week throughout the year lasting from 2 to 52 weeks. Whatever your goals are, wherever and whenever you want to realise them, Aspect has a course to suit you.

WIDE RANGE OF ACCOMMODATION OPTIONS

At Aspect we know that to make the most of your language course abroad, it's vital that you feel at home. That's why in each school there's an Accommodation Officer who will work hard to find you the right place to live - whether it's in a homestay, apartment or residence. Whichever option you choose, you'll be using your new language skills from dawn until dusk!

THE BEST SOCIAL LIFE

Whichever Aspect school you choose, you'll find a fun-packed weekly programme of social activities, excursions and sport events to suit all tastes. That means you'll have plenty of opportunities to explore your new host country whilst improving your language skills and having fun with your new international friends.

COMMITMENT TO QUALITY

We are firmly committed to offering a high quality of education and welfare to our students. Our accreditation by The British Council in the UK, ACCET in the United States, NEAS in Australia, NZQA in New Zealand, and by government-approved bodies in Canada and Ireland ensures the best standards of teaching, educational facilities and student welfare in all our schools.





ASPECT PEOPLE

Whether in London, Los Angeles, Toronto, Perth or Auckland, Aspect staff across the world share the same qualities: a passion for international education and a positive, 'can do' approach. With their help, you're sure to enjoy the experience of a lifetime when you study with Aspect!



ASPECT REPRESENTATIVES

Preparation is the key to a successful study experience. That's why our teams of Aspect sales advisors around the world ensure that all students are supplied with clear, detailed information about their course before they leave home, so they can sit back, relax and look forward to their trip!

ASPECT SCHOOL TEAM

On your first day of school, you'll receive a warm welcome from your Aspect school team. They are experts in language education and they will be glad to help you with anything you need - whether it's a question on the customs and traditions of your host country, how to get the most out of your studies or the best way to get around the local town.

ASPECT TEACHERS

Aspect teachers really know how to inspire and motivate students. With their highly interactive teaching approach, they'll encourage you to ask questions and put your new language skills into practice at every available opportunity.

ASPECT INTERNSHIP COUNSELLORS

Our Internship Counsellors will help you compile your CV, write letters of introduction and fully prepare you for your internship so that you get the chance to use your language skills in a real-life business environment.

ASPECT UNIVERSITY AND COLLEGE PLACEMENT ADVISORS

To gain entry to university in an English-speaking country, you will need advice and support to help you succeed. From assisting you with the initial application form through to helping you choose the most suitable universities for your subjects, our university and college placement staff will set you on the path to success.

ASPECT ACCOMMODATION STAFF

Our accommodation staff play a key role 'behind the scenes' and will do their utmost to place you in a home that matches your requirements – whether it's homestay, an apartment or a room in a student residence.

ASPECT ACTIVITIES ORGANISERS

Our Activities Organisers will encourage you to participate in a constantly-changing schedule of events, sports, excursions and parties so you can get to know your fellow students and see the very best of your host country.

ASPECT TEACHING

We've spent over 35 years refining our teaching methods so that we consistently offer the best language training. With our combination of skilled teachers, a well-structured curriculum and emphasis on academic support, you'll learn faster with Aspect!



INTERACTIVE METHOD OF TEACHING

Many students find that learning English with Aspect is very different from their experience of learning English in their own country. Our communicative method allows students to experiment with the language and immediately try out what they have learned. It encourages fluency and best of all, it's great fun!

MOTIVATING, FRIENDLY TEACHERS

Whilst teaching methodology is important, a good teacher will make all the difference to how quickly your English improves. At Aspect, we select teachers not only for their qualifications and experience, but also for their positive attitude, their lively imagination and their ability to make language learning fun.

HIGHLY EFFECTIVE LEARNING TECHNOLOGY

All Aspect schools are equipped with a dedicated multimedia centre where you can take language learning into your own hands. In addition to your supervised sessions, you can take advantage of this technology outside class hours for independent study. Check your tenses using computer-based tests, work on your vowels using

pronunciation software or sharpen up your listening skills by watching clips from a Hollywood film!

CONTINUOUS ASSESSMENT AND ACADEMIC SUPPORT

On your first day of school, you will take an Aspect placement test. This allows our Director of Studies to place you in a class with students of similar ability. Your progress is then monitored and recorded daily on your Individual Student Record. Regular meetings with your teacher will keep you focused on the areas of your English that need most attention.

CERTIFICATE OF ACHIEVEMENT

After all your hard work, you'll want to know how much progress you have made since the start of the course. Most schools offer the option of an exit test so you can check your level at the end of the programme. All schools will provide you with an Aspect Certificate documenting your achievements in the English language - written proof of your accomplishments for your future studies and career!

ASPECT TEACHERS ARE EXPERTS AT CONNECTING THE DRY MATTER OF ENGLISH, SUCH AS GRAMMAR, TO REAL LIFE CONTEXTS AND THIS MAKES ALL LESSONS INTERESTING.

SONJA MEINDL, GERMANY, ASPECT VANCOUVER



ASPECT ACCOMMODATION

Students who feel happy and comfortable at home study more effectively and learn more quickly. Whether you want to experience life with a local family or would prefer the international environment of an apartment or residence, we offer a range of accommodation options at our centres around the world so you'll be relaxed and ready to learn throughout your programme.

HOMESTAY ACCOMMODATION

Homestay accommodation is ideal for students who want to immerse themselves in the life and language of their host country. All Aspect hosts share an enthusiasm for international cultural exchange and offer students a welcoming, comfortable home, with many keeping in touch with students, years and years after they have left!

- » Homestay offers a warm welcome and good standard of accommodation in either twin or single rooms on a half board basis.
- » Homestay Plus offers you half board accommodation with an increased level of comfort. Available in the UK and Ireland only.

HOMESHARE

Homeshare provides you with comfortable accommodation offering all the benefits of Homestay in a shared home environment with three or more other international students. Available in the UK only.

AMERICAN COLLEGE CAMPUSES

Many of our US schools are on university campuses and offer student residence accommodation. Life on campus is the perfect way to make new friends and experience American student culture. You'll live alongside American and international students, sharing mealtimes in the cafeteria and enjoying excellent sports facilities – and it's only a short walk to class!

STUDENT RESIDENCES

In many of our city centre locations, Aspect can offer student residence accommodation within a short distance of school. Usually consisting of single, twin or triple study bedrooms, residences offer self-catering accommodation and a high degree of independence. Through daily interaction with international students, you'll have plenty of opportunities to practise your English skills, long after classes have finished!

APARTMENTS

At certain schools, we offer apartments where small groups of international students can enjoy the independence of self-catered housing, often located close to the school.

HOTELS AND HOSTELS

If you would like to stay in private accommodation, we can help you find a suitable hotel or hostel within easy reach of the Aspect schools.

Please see pages 22 onwards for the accommodation options at the school of your choice.



I CAN PRACTISE MY ENGLISH WITH NATIVE SPEAKERS, BE INVOLVED IN THE LIFE OF THE FAMILY, BE INDEPENDENT IF I WANT TO... AND I DON'T WORRY ABOUT COOKING!

BORIS BERGER, SWITZERLAND, ASPECT AUCKLAND



ASPECT SOCIAL ACTIVITIES

At Aspect, we'll keep you busy and stimulated throughout your leisure time. After all, the learning shouldn't stop when class finishes. In fact, a lot of your language acquisition will take place after school whilst you're enjoying the wide variety of activities on offer at your school.

YOUR ACTIVITIES ORGANISER

The Activities Organiser is responsible for the fun side of Aspect school life. Their typical day might involve anything from arranging a trip to a local ski resort, advising students on the latest movies to see or the best museums to visit, through to giving directions on the quickest way to the beach!

ASPECT'S SPORTING SPIRIT

Aspect schools all benefit from easy access to a range of sports facilities and students can join all sorts of organised activities such as tennis, volleyball, football and swimming. For the more adventurous types, many schools offer the ideal chance to try your hand at sailing, skiing, surfing and even white-water rafting or sky-diving.

EVENINGS IN AND NIGHTS OUT

There's no reason to stay home alone when you study with Aspect. Evenings are packed full of opportunities to enjoy yourself in the company of your new international friends. Enjoy a meal out in a local restaurant or café or go along to an Aspect party or movie night at the school.

DISCOVER A NEW CULTURE

There's a whole new culture to explore when you visit another country. So whether it's a trip to a London theatre show, an afternoon whale-watching off the coast of Vancouver, a weekend of world-class skiing on New Zealand's South Island or camping on the Australian coast, there's sure to be something on the activities schedule to excite you.

To view sample activity schedules for each school, please visit our website www.aspectworld.com



THE ACTIVITIES ARE WELL ORGANISED AND GOOD VALUE. OUR ACTIVITIES ORGANISER IS ALSO A GREAT AUSTRALIAN BBQ CHEF!

FABIEN RECOUILLE, FRANCE, ASPECT COLLEGE SYDNEY



ADDITIONAL SERVICES

Airport Transfer Service - Save yourself time and energy when you arrive and arrange for a friendly Aspect Representative to meet you at the airport and take you directly to your accommodation. Just be sure to request it on your enrolment form!

Travel and Medical Insurance - Our insurance policy will give you excellent cover for medical expenses, loss of belongings, personal liability, legal expenses and a number of other areas. Ask our booking staff for more information.

Cancellation Insurance - For peace of mind, take out cancellation insurance entitling you to a full refund of your fees in the event of cancellation due to illness. Look out for the box on the enrolment form and make sure you tick YES if you would like to take up this option!

ASPECT

PROGRESS AND ACHIEVEMENTS

Whether your aim is to pass a language exam, get onto a university preparation course or improve your language skills for professional reasons, Aspect will help you to progress as fast as possible. The table below shows the rates of progress that an average Aspect student makes when studying on an Aspect Premier Intensive programme for 22.5 hours per week. Of course, the longer you are able to study, the greater your achievements will be!

ASPECT LANGUAGE LEVELS	LANGUAGE PROGRESS	SCORES
PROFICIENCY Communicates at a level very close to the fluency of a native speaker; can handle all complex written and spoken language.		CPE, IELTS 6.5+ TOEFL (PAPER) 600+ TOEFL (COMPUTER) 250+
HIGHER ADVANCED Confident communicator but may lack vocabulary in specialist areas; able to express opinions with high degree of fluency.		CPE, IELTS 6.0 - 6.5 TOEFL (PAPER) 550 - 600 TOEFL (COMPUTER) 230 - 250
ADVANCED Effective use of spoken and written English but may make some errors with complex and idiomatic language.		CAE, IELTS 5.5 - 6.0 TOEFL (PAPER) 525 - 550 TOEFL (COMPUTER) 195 - 230
HIGHER INTERMEDIATE High level of grammatical competence; can understand and contribute to most conversations on familiar topics although may make some mistakes.		FCE, IELTS 5.0 - 5.5 TOEFL (PAPER) 450 - 525 TOEFL (COMPUTER) 145 - 195
INTERMEDIATE Able to converse easily on everyday matters but with a limited range of style and expression; can read and write fluently about familiar topics.		PET, IELTS 4.5 - 5.0 TOEFL (PAPER) 390 - 450 TOEFL (COMPUTER) 90 - 145
LOWER INTERMEDIATE Able to produce spoken and written language in familiar situations; fair control of grammatical structure but vocabulary is limited.		PET, IELTS 4.0 - 4.5 TOEFL (PAPER) 310 - 390 TOEFL (COMPUTER) 50 - 90
ELEMENTARY Able to talk about interests and everyday activities and use basic grammatical constructions; can understand simple messages, instructions and directions.		
BEGINNER Very little previous exposure to the language; can use and recognise only common words, greetings and expressions; no grammatical knowledge.		
	0 10 20 30 40 50 60	

Please note that this chart should only be used as a guide to average progress rates. We cannot guarantee an exact period of study over which specific language goals can be attained.



RECOGNISED EXAM CERTIFICATES – FOR ALL LEVELS

At Aspect, you can prepare for a range of internationally recognised exams including TOEFL, IELTS, FCE, CAE, CPE and TOEIC. Whether you want to impress your future employers, get into university or just prove to yourself what you can achieve in English, any of these certificates will serve as irrefutable proof of your achievements!

ASPECT COURSE CERTIFICATES

Even if you're studying with us for a shorter period of time and are not able to take an externally recognised exam, we'll make sure you receive a course certificate. Through careful and constant monitoring of your level, our academic staff will provide a document including full details of your language ability at the time of completion of your course.

ACADEMIC YEAR/SEMESTER COURSE CERTIFICATES

Completing an Aspect Academic Year/Semester is an achievement in itself which you will want to prove to future employers or academic institutions. All our Academic Year/Semester students receive certificates giving details on the language level attained at the end of the programme.

WORK EXPERIENCE CERTIFICATES

If you want documented proof that you can function in English in a business environment, then you'll be delighted to know that there's a qualification especially for work placement students in the UK and Ireland which includes a reference from your employer. In the USA, Canada, Australia, New Zealand, we'll provide you with an Aspect certificate showing what you have achieved on your internship!

UNIVERSITY FOUNDATION DIPLOMAS/CERTIFICATES

For more information on our University Foundation programmes in the UK, Australia and New Zealand, please see page 21. Students who successfully complete one of these programmes are awarded a Diploma or Certificate in Foundation studies.

OTHER CERTIFICATES AND QUALIFICATIONS ON OFFER

Whether it's a graphic design course at Aspect in Christchurch, a European Computer Driving Licence qualification at our London school, a CMI Diploma in Management offered on our Pre-Masters/Pre-MBA programme in the UK, a GMAT score in the USA or a Diploma from International School of Business and Technology in Australia, Aspect has a range of academic and vocational qualifications at its schools around the world to suit your needs.

ASPECT STUDY OPTIONS

At Aspect, we have English programmes to suit every student. Take a look at our wide range of course options on pages 12-21 and choose the Aspect course that suits you.

GENERAL ENGLISH

PREMIER INTENSIVE

Our Premier Intensive Course is the single most popular programme we offer and provides the fastest, most effective way to learn English. It's also ideal for all types of students and is available at all levels.

IMPROVE AT THE FASTEST RATE

You will enjoy 30 lessons per week: 20 general English lessons and 10 electives. Your general English lessons will concentrate on the key areas of reading, writing, speaking and listening and through computer-assisted language learning in our self-access centre, you can work on pronunciation and listening skills.

PERSONALISE YOUR COURSE

Your elective classes will supplement your general English classes and will allow you to personalise your course according to your needs. Electives vary but may include English for Business, Local Culture, Art and Literature and Exam Preparation for a range of exams including Cambridge, IELTS and TOEFL.

PREMIER PLUS

Our Premier Plus Course focuses on the essential four skills: reading, writing, speaking and listening. Before you know it, you'll be writing, understanding and speaking English with much greater confidence.

COMPREHENSIVE LANGUAGE TRAINING

As a Premier Plus student, you will receive 24 lessons per week: 20 general English lessons and 4 electives. Your general English lessons will allow you to build up your grammar and communication skills. You can also make use of computers and language learning software in our self-access centre for additional practice in all four skills.

A WIDE RANGE OF ELECTIVES

Your electives will allow you to focus on subjects that are of particular interest to you. Depending on your language level and choice of school, you can choose from subjects such as Conversation, Film, Local Culture and Current Affairs.

PREMIER

If you want to combine English study with a fun holiday abroad, this is the ideal course for you. Lessons concentrate on the key language skills while our optional activities programme will introduce you to all the sights of your host country.

LEARN ENGLISH AND SEE THE WORLD

Our Premier Course will provide you with 20 lessons of classroom instruction each week. These lessons may be scheduled for the morning or the afternoon, leaving you plenty of free time for sightseeing, sports and social activities.

VARIED TEACHING METHODS

Premier Course lessons concentrate on practical English for everyday use. Your teachers will employ up-to-date textbooks and real-life examples to bring your lessons to life. You can also make use of computers and language learning software in our self-access centre.

COURSE FACTS

- » **Number of 45 minute lessons/week:** 30
20 general English + 10 electives
(+ 2.5 hrs supervised self-study in Australia)
- » **Levels**
Beginners to Advanced
- » **Minimum age**
16
- » **Course length**
2 weeks minimum
- » **Class size**
Average 12, maximum 15
- » **Start dates**
Every Monday
- » **Locations**
All schools

COURSE FACTS

- » **Number of 45 minute lessons/week:** 24
20 general English + 4 electives
- » **Levels**
Beginners to Advanced
- » **Minimum age**
16
- » **Course length**
2 weeks minimum
- » **Class size**
Average 12, maximum 15
- » **Start dates**
Every Monday
- » **Locations**
All schools except Torbay, Ft Lauderdale, Sydney, Perth, Auckland, Christchurch, Malta, Cape Town

COURSE FACTS

- » **Number of 45 minute lessons/week:** 20
20 general English
- » **Levels**
Beginners to Advanced
- » **Minimum age**
16
- » **Course length**
2 weeks minimum
(AUS/NZ: 12 weeks maximum due to visa regulations)
- » **Class size**
Average 12, maximum 15
- » **Start dates**
Every Monday
- » **Locations**
All schools
- » **Note** Not available to student visa holders in Australia and New Zealand



RECENT INTERNSHIPS

- » ACCOUNTANCY, **Brit-Euro Car Parts Ltd**, Auckland
- » BROADCASTING, **Clear Channel Communications TV**, Santa Barbara
- » CHARITY, **International Red Cross**, Vancouver
- » CULTURE, **Theatre Workshop**, Edinburgh
- » EDUCATION, **Learning Leaders Inc.**, New York
- » ELECTRONIC ENGINEERING, **MG Rover**, London
- » FASHION DESIGN, **Julie Kipta Inc.**, Chicago
- » FINANCE, **Custom House**, Dublin
- » HOSPITALITY, **The Empress Hotel**, La Jolla, San Diego
- » HUMAN RESOURCES, **Adecco**, Perth
- » JOURNALISM, **Toronto Sun**, Toronto
- » LAW, **Sherer & Smith LLP**, San Francisco
- » MEDIA, **The Irish Examiner**, Dublin
- » MARKETING, **Maxwell Technologies**, San Diego
- » PSYCHOLOGY, **Anna Freud Centre**, London
- » PUBLIC RELATIONS, **Halden Burns**, Perth
- » PUBLISHING, **New Consumer**, Edinburgh
- » TOURISM, **Captain Cook Cruises**, Sydney
- » VETERINARY SCIENCE, **Annandale Animal Hospital**, Sydney
- » WEB DESIGN, **A-1 Technology**, New York

WE LOVE HAVING ASPECT INTERNS. THEY BRING A NEW APPROACH AND FRESH IDEAS TO THE COMPANY. IN RETURN, WE GET TO HELP THEM WITH THEIR PROFESSIONAL AND LANGUAGE SKILLS, ADDING TO THEIR OVERALL EXPERIENCE IN AUSTRALIA.

IAN LISSER-SPOULE, H2O CREATIVE COMMUNICATION, SYDNEY



CMI DIPLOMA IN MANAGEMENT COURSE, ASPECT BOURNEMOUTH AND ASPECT LONDON

Ideal for advanced level students who are either postgraduates or have at least 3 years' professional experience, this 20-week course comprises 10 weeks studying towards the CMI Diploma in Management, followed by an 8-week work placement and a further 2 weeks of study to complete the diploma.

IT START COURSE, ASPECT TORONTO

This course combines 8 weeks of English language study, 27 weeks of Information Technology training and an 8-week placement working in Information Technology. For more details, please ask your Aspect representative.

ASPECT INTERNATIONAL SCHOOL OF BUSINESS AND TECHNOLOGY (AISBT), AUSTRALIA

Our business and technology schools in Sydney and Perth offer a range of vocational training programmes in E-Business, Business and Retail. The Certificate, Diploma and Advanced Diploma courses start every 8 weeks and prepare you for entry into the workplace or year 2 at an Australian university.

DESIGN AND ARTS COLLEGE, NEW ZEALAND

This Aspect-owned college in Christchurch offers highly focused vocational training in all areas of art, design and make-up artistry, turning out highly marketable candidates for today's tough employment climate.

Please ask your local representative for more information or a copy of our Design and Arts College and Aspect International School of Business and Technology brochures.



ASPECT COLLEGE **LONDON**

Vibrant nightlife, stunning architecture, beautiful parks, international cuisine and the finest museums and galleries - you'll find it all in London! And with its fashionable clubs and bars, world-renowned theatres and probably the widest variety of shops and boutiques anywhere in the world, few cities can offer visitors such a diversity of things to do and see all in one place.



THE TEACHERS' APPROACH HERE IS REALLY PROFESSIONAL. THEY MAKE US FEEL COMFORTABLE AND FOR THEIR PATIENCE, THEY DESERVE A MEDAL!

YEVGENIYA PLOTNIKOVA, RUSSIA



ASPECT COLLEGE LONDON

Aspect College London is located in the heart of the capital and is just minutes away from many lively cafés, bars, garden squares and fashion boutiques. The college offers an excellent mix of nationalities, with the city's reputation attracting visitors from all around the world.

The college is situated in an historic, listed building dating from the 18th century which has been fully refurbished and modernised. Facilities include 15 bright classrooms, a modern multimedia centre with free Internet access, a comfortable student lounge, a large screen TV, a library and an outdoor terrace.

ACCOMMODATION OPTIONS

Your Aspect Accommodation Officer will make sure that you feel at home during your stay and will provide you with the following accommodation options:

- » Homestay twin/single (min. age 16): 12 meals per week
- » Homestay Plus twin/single (min. age 16): 12 meals per week
- » Homeshare twin/single (min. age 16): 12 meals per week
- » Apartment Notting Hill twin/single (min. age 18): self-catering
- » Residence IES twin (min. age 18): centrally-located residence on the fashionable King's Road with self-catering facilities

ACTIVITIES AND EXCURSIONS

London offers an endless choice of activities to experience in your free time. Aspect College London's full time activities staff are always available to advise you about sports activities and nights out and will arrange an exciting programme of excursions, both in the UK and further afield. Examples include:

- » Disco cruises down the River Thames
- » Nights out in London's thriving theatre district
- » Visit to Big Ben and The Houses of Parliament
- » A walk around the street markets of Covent Garden
- » Trip to the Tower of London to see the famous Crown Jewels
- » Tour of Madame Tussaud's to rub shoulders with Michael Jackson or The Queen!

ASPECT COLLEGE LONDON 3-4 Southampton Place, London WC1A 2DA

WHY ASPECT COLLEGE LONDON?

- » Centrally located college, 5 minutes from Covent Garden
- » Elegant building with excellent, up-to-date learning facilities
- » A vibrant international student community
- » London – world-class city with something to suit all tastes!

« 1 Aspect College London 2 Experience the buzz of the UK's exciting capital city 3 Benefit from focused language study at Aspect College London 4 Take advantage of all that London has to offer! 5 Enjoy a day out at Hampton Court, home of King Henry VIII

COURSES AND START DATES

- » **Premier Intensive, Premier Plus, Premier Courses:** (see page 12)
2005: Jan 4/17/31; Feb 14/28; Mar 14/29; Apr 11/25; May 9/23; Jun 6/20/27; Jul 4/11/18/25; Aug 1/8/15/22; Sep 5/19; Oct 3/17/31; Nov 14/28 2006: Jan 3/16/30; Feb 13/27; Mar 13
- » **TOEFL Preparation Course:** (see page 13) On request
- » **Cambridge Exam Preparation Course:** (12 week FCE course, see page 13)
2005: Mar 21 - Jun 10; Sep 19 - Dec 9
- » **IELTS Preparation Course:** (see page 13)
2005: Feb 7; Apr 18; Jun 20; Aug 22; Oct 10
(4 week IELTS course start dates: 2005: Jun 20; Jul 18; Aug 22)
- » **English for Business Course:** (see page 14) See Premier dates above
- » **Internship/Internship Plus:** (see page 14) See Premier dates above
- » **Academic Year:** (see page 16-19)
2005: Jan 4; Apr 18; Jun 20; Sep 26 2006: Jan 9; Apr 18
- » **Academic Semester:** (see page 16-19)
2005: Jan 4; Mar 14; Apr 18; Jun 20; Sep 26; Oct 24 2006: Jan 9; Mar 13; Apr 18

GENERAL TUITION FEES (£/WEEK)

Multiply your chosen course length by the weekly price for that duration.

Course (lessons/wk)	2-4 wks	5-11 wks	12-19 wks	20+ wks
Premier (20)	180	170	160	155
Premier Plus (24)	200	190	180	175
Premier Intensive (30)	230	220	210	200
Cambridge (20)	-	-	160	-
Cambridge Intensive (30)	-	-	210	-
IELTS (30)	230	220	210	-
English for Business	230	220	210	200
Internship supplement (fixed rate)	4-7 wks 400	8-12 wks 500		
One to one tuition supplement	40 per lesson			

ACADEMIC YEAR/SEMESTER TUITION FEES (£)

	Plus (24 lessons)	Intensive (30 lessons)
Academic Year	4160	4610
Academic Semester	2900	3300

FEES INCLUDE

» 30, 24, or 20 lessons per week » Orientation meeting » Free information and welcome pack on arrival » Free use of Multimedia Computer Centre and Internet » Free University & College Placement Service (for students enrolled for 8 weeks or longer) » Aspect Certificate » Progress testing » Student identity card

ACCOMMODATION SERVICES (£/WEEK)

Type of Accommodation	Twin	Single
Homeshare (12 meals/week)	92	107
Homestay (12 meals/week)	100	115
Homestay Plus (12 meals/week)	140	155
Apartment Notting Hill (No meals)	140	180
Residence IES (No meals)	170	On request

DISCOUNTED ACCOMMODATION PACKAGE PRICES (£)

Type of Accommodation	Academic Year (inc. vacation)	Academic Semester (inc. vacation)
Homeshare twin (12 meals/wk)	2970	1782
Homeshare single (12 meals/wk)	3495	2097
Homestay twin (12 meals/wk)	3250	1950
Homestay single (12 meals/wk)	3775	2265
Homestay Plus twin (12 meals/wk)	4650	2790
Homestay Plus single (12 meals/wk)	5175	3105
Apartment Notting Hill twin (No meals)	4450	2605
Apartment Notting Hill single (No meals)	5400	3205
Residence IES twin (No meals)	5750	3430

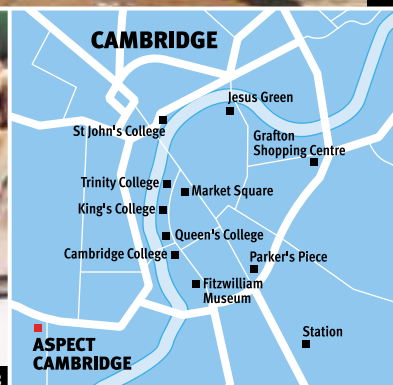
SUPPLEMENTS (£)

Enrolment fee	55
University & College Placement Service	350
Homestay 'Close to School'	40 (per week)
Homestay/share Christmas supplement	40 (per week)
Homestay/share Summer supplement (25 Jun '05 - 28 Aug '05)	20 (per week)
Transfer service (Heathrow, Gatwick, Stansted, Luton, City)	60-85 (one-way)

Note: Additional accommodation may be required when taking external exams. Please ask your Aspect representative for more information. Further supplements /deposits (courier, insurance, change, materials, housing) are listed on page 66.

ASPECT COLLEGE **CAMBRIDGE**

Less than 1 hour from London, this world-famous 'seat of learning' for nearly 800 years combines the tranquil beauty of its university with a busy town centre that offers a range of shops, pubs and first-class restaurants. It also boasts a lively arts scene with a variety of theatres, concerts and exhibitions. And whether you choose to get around on foot or by bicycle, you'll find everything you need conveniently located, just minutes away!





ASPECT COLLEGE CAMBRIDGE

Aspect College Cambridge is a thoroughly modern language college housed in an elegant and traditional English building. Located in a pretty residential area only 20 minutes on foot from the city centre, the college offers a peaceful study environment with easy access to the attractions of central Cambridge. Our college has long been a favourite destination of language students from all over the world.

Facilities include 9 well-equipped classrooms, a multimedia computer centre with free Internet access, a study room/library, coffee shop serving hot lunches and snacks and a large garden with outdoor eating area.

ACCOMMODATION OPTIONS

Your Aspect Accommodation Officer will make sure that you feel at home during your stay and will provide you with the following accommodation options:

- » Homestay twin/single (min. age 16): half-board
- » Homestay Plus twin/single (min. age 16): half-board
- » Homeshare twin/single (min. age 16): half-board
- » Residence Varsity single (min. age 18): self-catering residence, only a 15-minute bicycle ride from the college

ACTIVITIES AND EXCURSIONS

Our Activities Organiser is always on hand to provide advice on how to spend your free time. You can also join Aspect's popular and varied activities programme. Regular trips and events include:

- » Walk around Cambridge University's most famous colleges
- » Day trip to enjoy the excitement of London
- » Excursions to Shakespeare's birthplace, Stratford-Upon-Avon
- » Cultural trip to the Fitzwilliam Museum
- » Sports including football, swimming and tennis
- » Weekend excursions to Paris or Edinburgh

ASPECT COLLEGE CAMBRIDGE 75 Barton Road, Cambridge CB3 9JJ

WHY ASPECT COLLEGE CAMBRIDGE?

- » Attractive Edwardian building with first-rate learning facilities
- » Located in pretty residential area and boasting spacious garden
- » An ideal place for focused language study
- » Cambridge – a world-famous university city with a lively student lifestyle

COURSES AND START DATES

- » **Premier Intensive, Premier Plus, Premier Courses:** (see page 12)
2005: Jan 4/10/24; Feb 7/21; Mar 7/21; Apr 4/18; May 3/16/31; Jun 13/27; Jul 4/11/18/25; Aug 1/8/15/22/30; Sep 12/26; Oct 10/24; Nov 7/21; Dec 5
2006: Jan 3/9/23; Feb 6/20; Mar 6
- » **Beginner Start Dates:** **2005:** Jul 4; Aug 1/15
- » **Cambridge Exam Preparation Course:** (see page 13)
2005: Jan 4 - Mar 11 (FCE, 10 weeks); Mar 21 - Jun 10 (FCE, CAE and CPE, 12 weeks); Sep 19 - Dec 9 (FCE, CAE and CPE, 12 weeks)
- » **Academic Year:** (see page 16-19)
2005: Jan 4; Apr 18; Jun 20; Sep 26
2006: Jan 9; Apr 18
- » **Academic Semester:** (see page 16-19)
2005: Jan 4; Mar 14; Apr 18; Jun 20; Sep 26; Oct 24
2006: Jan 9; Mar 13; Apr 18

GENERAL TUITION FEES (£/WEEK)

Multiply your chosen course length by the weekly price for that duration.

Course (lessons/wk)	2-4 wks	5-11 wks	12-19 wks	20+ wks
Premier (20)	170	160	150	145
Premier Plus (24)	200	190	180	175
Premier Intensive (30)	230	220	210	200
Cambridge (20)	-	160	150	-
Cambridge Intensive (30)	-	220	210	-
One to one tuition supplement	40 (per lesson)			

ACADEMIC YEAR/SEMESTER TUITION FEES (£)

	Plus (24 lessons)	Intensive (30 lessons)
Academic Year	4160	4610
Academic Semester	2900	3300

FEES INCLUDE

- » 30, 24, or 20 lessons per week » Orientation meeting » Free information and welcome pack on arrival » Free use of Multimedia Computer Centre and Internet » Free University & College Placement Service (for students enrolled for 8 weeks or longer) » Aspect Certificate » Progress testing » Student identity card

ACCOMMODATION SERVICES (£/WEEK)

Type of Accommodation	Twin	Single
Homeshare (14 meals/wk)	87	102
Homestay (14 meals/wk)	95	110
Homestay Plus (14 meals/wk)	135	150
Residence Varsity (No meals)	-	130

DISCOUNTED ACCOMMODATION PACKAGE PRICES (£)

Type of Accommodation	Academic Year (inc. vacation)	Academic Semester (inc. vacation)
Homeshare twin (14 meals/wk)	2795	1677
Homeshare single (14 meals/wk)	3320	1992
Homestay twin (14 meals/wk)	3075	1845
Homestay single (14 meals/wk)	3600	2160
Homestay Plus twin (14 meals/wk)	4475	2685
Homestay Plus single (14 meals/wk)	5000	3000
Residence Varsity single (No meals)	4350	2600

SUPPLEMENTS (£)

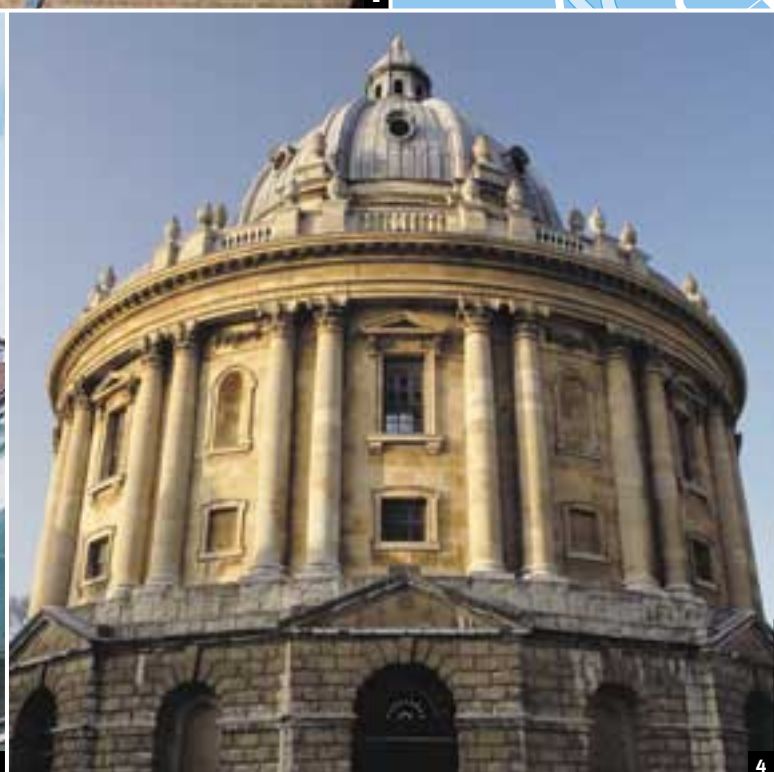
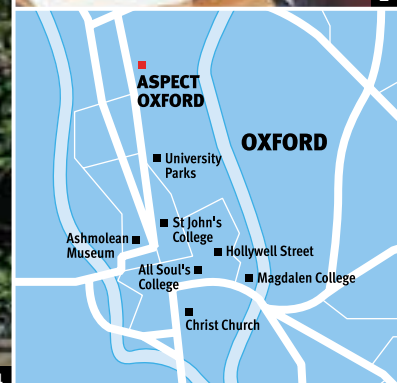
Enrolment fee	55
University & College Placement Service	350
Homestay 'Close to School'	20 (per week)
Homestay/share Christmas supplement	40 (per week)
Homestay/share Summer supplement (25 Jun '05 - 28 Aug '05)	20 (per week)
Transfer service (Heathrow, Gatwick, Stansted, Luton, City)	55-120 (one-way)

Note: Additional accommodation may be required when taking external exams. Please ask your Aspect representative for more information. Further supplements /deposits (courier, insurance, change, materials, housing) are listed on page 66.

1 While away an afternoon on a punt, Cambridge's favourite mode of transport! 2 Aspect College Cambridge 3 Refine your English at Aspect in stimulating, multinational classes 4 Relax during break time in the school's attractive garden

ASPECT COLLEGE **OXFORD**

Home to the world's oldest English-speaking university and within easy reach of London by bus or train, Oxford's city centre bustles with interesting shops, lively markets and a wide range of galleries and museums. For relaxation, there's an endless list of things to do, whether it's gliding down the River Cherwell on a punt, taking a leisurely stroll through Christchurch Meadows or enjoying the atmosphere of one of Oxford's traditional pubs.





ASPECT COLLEGE OXFORD

Aspect College Oxford is housed in a fine Edwardian building in a fashionable residential area, just 10 minutes from the city centre. Students from all over the world enjoy the sociable atmosphere of this popular college and the modern, stylish facilities. These include 10 spacious classrooms, multimedia centre with free Internet access, a large garden, a cafeteria serving hot lunches and snacks and a popular open-air courtyard.

ACCOMMODATION OPTIONS

Your Aspect Accommodation Officer will make sure that you feel at home during your stay and will provide you with the following accommodation options:

- » Homestay twin/single (min. age 16): half-board
- » Homestay Plus twin/single (min. age 16): half-board
- » Homeshare twin/single (min. age 16): half-board
- » Apartment twin/single (min. age 18): self-catering apartment close to the college

ACTIVITIES AND EXCURSIONS

As well as being the perfect study environment, Oxford is an excellent base from which to discover the heart of England. London is only an hour away by train. Aspect College Oxford also organises a weekly programme of events which may include:

- » A tour of Oxford University's famous colleges
- » Ice-skating and cinema trips
- » An evening in a traditional Oxford pub
- » Trips to Bath, Stratford, Stonehenge and Windsor
- » Picnics in the university parks
- » Punting on the River Cherwell

ASPECT COLLEGE OXFORD 108 Banbury Road, Oxford, OX2 6JU

WHY ASPECT COLLEGE OXFORD?

- » Award-winning building with superb modern facilities
- » Excellent location in an upmarket residential area, 10 minutes from the city centre
- » A fun, lively college environment with garden and terrace
- » Oxford – a famous university city steeped in academic tradition

COURSES AND START DATES

- » **Premier Intensive, Premier Plus, Premier Courses:** (see page 12)
2005: Jan 4/17/31; Feb 14/28; Mar 14/29; Apr 11/25; May 9/23; Jun 6/20/27; Jul 4/11/18/25; Aug 1/8/15/22; Sep 5/19; Oct 3/17/31; Nov 14/28 **2006:** Jan 3/16/30; Feb 13/27; Mar 13
- » **Cambridge Exam Preparation Course:** (see page 13)
2005: Jan 4 - Mar 11 (FCE, 10 weeks); Mar 21 - Jun 10 (FCE and CAE, 12 weeks); Sep 19 - Dec 9 (FCE and CAE, 12 weeks)
- » **Academic Year:** (see page 16-19)
2005: Jan 4; Apr 18; Jun 20; Sep 26 **2006:** Jan 9; Apr 18
- » **Academic Semester:** (see page 16-19)
2005: Jan 4; Mar 14; Apr 18; Jun 20; Sep 26; Oct 24 **2006:** Jan 9; Mar 13; Apr 18

GENERAL TUITION FEES (£/WEEK)

Multiply your chosen course length by the weekly price for that duration.

Course (lessons/wk)	2-4 wks	5-11 wks	12-19 wks	20+ wks
Premier (20)	170	160	150	145
Premier Plus (24)	200	190	180	175
Premier Intensive (30)	230	220	210	200
Cambridge (20)	-	160	150	-
Cambridge Intensive (30)	-	220	210	-
One to one tuition supplement	40 (per lesson)			

ACADEMIC YEAR/SEMESTER TUITION FEES (£)

	Plus (24 lessons)	Intensive (30 lessons)
Academic Year	4160	4610
Academic Semester	2900	3300

FEES INCLUDE

» 30, 24, or 20 lessons per week » Orientation meeting » Free information and welcome pack on arrival » Free use of Multimedia Computer Centre and Internet » Free University & College Placement Service (for students enrolled for 8 weeks or longer) » Aspect Certificate » Progress testing » Student identity card

ACCOMMODATION SERVICES (£/WEEK)

Type of Accommodation	Twin	Single
Homeshare (14 meals/wk)	87	102
Homestay (14 meals/wk)	95	110
Homestay Plus (14 meals/wk)	135	150
Apartment (No meals)	115	125

DISCOUNTED ACCOMMODATION PACKAGE PRICES (£)

Type of Accommodation	Academic Year (inc. vacation)	Academic Semester (inc. vacation)
Homeshare twin (14 meals/wk)	2795	1677
Homeshare single (14 meals/wk)	3320	1992
Homestay twin (14 meals/wk)	3075	1845
Homestay single (14 meals/wk)	3600	2160
Homestay Plus twin (14 meals/wk)	4475	2685
Homestay Plus single (14 meals/wk)	5000	3000
Apartment twin (No meals)	3850	2310
Apartment single (No meals)	4025	2405

SUPPLEMENTS (£)

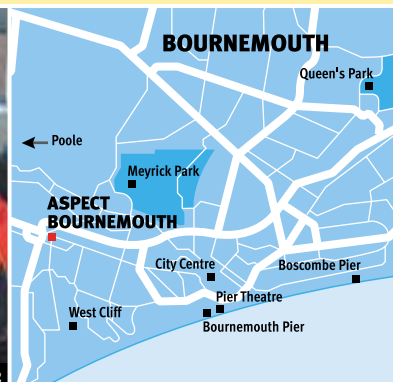
Enrolment fee	55
University & College Placement Service	350
Homestay "Close to School"	20 (per week)
Homestay/share Christmas supplement	40 (per week)
Homestay/share Summer supplement (25 Jun '05 - 28 Aug '05)	20 (per week)
Transfer service (Heathrow, Gatwick, Stansted, Luton, City)	105-135 (one-way)

Note: Additional accommodation may be required when taking external exams. Please ask your Aspect representative for more information. Further supplements / deposits (courier, insurance, change, materials, housing) are listed on page 66.

« **1** Aspect College Oxford **2** Perfect your English with the help of Aspect's skilled, experienced teachers **3** Join Aspect's cosmopolitan student body! **4** Discover the splendour of Oxford, the UK's oldest university town

ASPECT COLLEGE **BOURNEMOUTH**

Voted one of Britain's best places to live and under two hours by train from London, Bournemouth is an ideal destination for international students. With miles of sandy beaches, beautiful landscaped parks, elegant seafront cafés and some of England's most stunning scenery just a short distance from the town, there's no shortage of affordable ways for language students to keep themselves busy after class!





ASPECT COLLEGE BOURNEMOUTH

This spacious and lively modern college has ample facilities for the wide range of courses offered. With 20 classrooms, an IT centre, a study centre with the latest multimedia computer facilities, a video room and lecture rooms, Aspect College Bournemouth provides an excellent environment in which to study and learn.

The college also has a popular common room where you can relax, listen to music, chat to friends or send emails back home. We are proud of the school's excellent track record in preparing long-term students for academic success and university entrance.

ACCOMMODATION OPTIONS

Your Aspect Accommodation Officer will make sure that you feel at home during your stay and will provide you with the following accommodation options:

- » Homestay twin/single (min. age 16): half-board
- » Homestay Plus twin/single (min. age 16): half-board
- » Homeshare twin/single (min. age 16): half-board
- » Residence Pacifico twin/single (min. age 18): self-catering
- » Residence Loxwood twin/single (min. age 18): self-catering
- » Residence Chinewood twin/single (min. age 18): self-catering

ACTIVITIES AND EXCURSIONS

This popular student town and seaside resort offers excellent leisure facilities for students. Your Activities Organiser in Aspect College Bournemouth will arrange a full schedule of activities and excursions to keep you busy after class:

- » Weekend excursions to Bath, Stonehenge, London, Brighton and Oxford
- » Boat trips in stunning Poole Harbour
- » Walks along the beautiful Dorset coastline
- » Summer barbecue parties
- » Pony riding in the New Forest
- » Trips to local castles and stately homes

ASPECT COLLEGE BOURNEMOUTH 130-136 Poole Road, Bournemouth, BH4 9EF

WHY ASPECT COLLEGE BOURNEMOUTH?

- » Lively college with vibrant and friendly atmosphere
- » Range of university preparation courses and expert placement service
- » First-class facilities including a multimedia centre and a popular coffee shop
- » Bournemouth – popular beach resort with a large student population

« 1 Aspect College Bournemouth 2 Master the key skills with Aspect's communicative teaching approach 3 Unwind after class with a game of beach volleyball! 4 Experience the great lifestyle of England's stunning South Coast

COURSES AND START DATES

- » **Premier Intensive, Premier Plus, Premier Courses:** (see page 12)
2005: Jan 4/10/24; Feb 7/21; Mar 7/21; Apr 4/18; May 3/16/31; Jun 13/27; Jul 4/11/18/25; Aug 1/8/15/22/30; Sep 12/26; Oct 10/24; Nov 7/21; Dec 5
2006: Jan 3/9/23; Feb 6/20; Mar 6
- » **Beginner Start Dates:** 2005: Jan 10; Feb 7; Mar 7; Apr 4; May 3/31; Jun 27; Jul 25; Aug 22; Sep 26; Oct 24; Nov 21
2006: Jan 9; Feb 6; Mar 6
- » **TOEFL Preparation Course:** (see page 13) On request
- » **Cambridge Exam Preparation Course:** (12 week FCE course, see page 13)
2005: Mar 21 - Jun 10; Sep 19 - Dec 9
- » **IELTS Preparation Course:** (see page 13)
2005: Jan 10; Mar 14; May 9; Jul 11; Sep 5
(4 week IELTS course start dates: 2005: Jun 20; Jul 18; Aug 22)
- » **English for Business Course:** (see page 14) See Premier dates above
- » **Paid Work:** (see page 15) See Premier dates above
- » **Academic Year:** (see page 16-19)
2005: Jan 4; Apr 18; Jun 20; Sep 26
2006: Jan 9; Apr 18
- » **Academic Semester:** (see page 16-19)
2005: Jan 4; Mar 14; Apr 18; Jun 20; Sep 26; Oct 24
2006: Jan 9; Mar 13; Apr 18

GENERAL TUITION FEES (£/WEEK)

Multiply your chosen course length by the weekly price for that duration.

Course (lessons/wk)	2-4 wks	5-11 wks	12-19 wks	20+ wks
Premier (20)	160	150	140	135
Premier Plus (24)	185	175	165	160
Premier Intensive (30)	205	195	185	180
Cambridge (20)	-	-	140	-
Cambridge Intensive (30)	-	-	185	-
IELTS (30)	205	195	185	-
English for Business (30)	205	195	185	180
Paid Work placement fee (fixed rate)	350			
One to one tuition supplement	40 (per lesson)			

ACADEMIC YEAR/SEMESTER TUITION FEES (£)

	Plus (24 lessons)	Intensive (30 lessons)
Academic Year	4160	4610
Academic Semester	2900	3300

FEES INCLUDE

- » 30, 24, or 20 lessons per week » Orientation meeting » Free information and welcome pack on arrival » Free use of Multimedia Computer Centre and Internet » Free University & College Placement Service (for students enrolled for 8 weeks or longer) » Aspect Certificate » Progress testing » Student identity card

ACCOMMODATION SERVICES (£/WEEK)

Type of Accommodation	Twin	Single
Homeshare (14 meals/wk)	72	80
Homestay (14 meals/wk)	80	88
Homestay Plus (14 meals/wk)	120	128
Residence Chinewood (No meals)	75	90
Other residences (No meals)	95	105

DISCOUNTED ACCOMMODATION PACKAGE PRICES (£)

Type of Accommodation	Academic Year (inc. vacation)	Academic Semester (inc. vacation)
Homeshare twin (14 meals/wk)	2270	1362
Homeshare single (14 meals/wk)	2550	1530
Homestay twin (14 meals/wk)	2550	1530
Homestay single (14 meals/wk)	2830	1698
Homestay Plus twin (14 meals/wk)	3950	2370
Homestay Plus single (14 meals/wk)	4230	2538
Residence Chinewood twin (No meals)	2425	1455
Residence Chinewood single (No meals)	2950	1780
Other residences twin (No meals)	2950	1780
Other residences single (No meals)	3475	2080

SUPPLEMENTS (£)

Enrolment fee	55
University & College Placement Service	350
Homestay 'Close to School'	20 (per week)
Homestay/share Christmas supplement	40 (per week)
Homestay/share Summer supplement (25 Jun '05 - 28 Aug '05)	20 (per week)
Transfer service (Heathrow, Gatwick, Stansted, Luton, City)	75-110 (one-way)

Note: Additional accommodation may be required when taking external exams. Please ask your Aspect representative for more information. Further supplements /deposits (courier, insurance, change, materials, housing) are listed on page 66.

ASPECT COLLEGE **EDINBURGH**

Scotland's unique blend of natural beauty and romantic tradition makes it a tourist destination for thousands of visitors every year. Whether it's the taste of Scotch whisky, the sound of bagpipes or the warmth of the Scottish people that draws you here, there's no better place to experience Scottish culture than in its majestic capital city, Edinburgh. Breathtakingly beautiful, cosmopolitan and with one of Europe's largest student populations, this is a first-rate location in which to study English.





ASPECT COLLEGE EDINBURGH

Aspect College Edinburgh is in the very heart of the city, just minutes from the stylish shops of Princes Street and the imposing fortress of Edinburgh Castle.

Spread over five floors of a beautiful Georgian house, our college's facilities include 12 classrooms with listening and recording equipment, reading and video libraries and a multimedia and self-study centre offering free email and Internet access to all students. Between lessons, students can relax in the spacious student common room or outside in the college's own garden.

ACCOMMODATION OPTIONS

Your Aspect Accommodation Officer will make sure that you feel at home during your stay and will provide you with the following accommodation options:

- » Homestay twin/single (min. age 16): half-board
- » Homestay Plus twin/single (min. age 16): half-board
- » Homeshare twin/single (min. age 16): half-board
- » Apartment Linton Court twin/single (min. age 18): self-catering
- » Residence Pollock Halls twin/single (min. age 18): self-catering (summer only)

ACTIVITIES AND EXCURSIONS

Your Aspect Activities Organiser will help you make the most of your time in Scotland, with daily activities and weekend trips. These may include:

- » Trip to beautiful Loch Lomond and historic Stirling Castle
- » A tour of Edinburgh Castle
- » A guided tour of the Scotch Whisky Heritage Centre
- » Nights at a Ceilidh – a traditional Scottish dance
- » Visit to the cities of St Andrews and Glasgow
- » Trips to experience the history of nearby castles and stately homes

ASPECT COLLEGE EDINBURGH 11 Great Stuart Street, Edinburgh EH3 7TP

WHY ASPECT COLLEGE EDINBURGH?

- » Excellent location in Edinburgh's New Town
- » Handsome building with first-class learning facilities and a peaceful garden
- » Highly-experienced team to give students a true Scots welcome
- » Edinburgh – a historic university city set in beautiful natural landscape

1 Marvel at the beauty of Edinburgh, known as "the Athens of the North" 2 Study in Aspect's elegant Georgian building with first-rate facilities 3 Atune your ear to the haunting sound of the bagpipes 4 Aspect College Edinburgh

COURSES AND START DATES

- » **Premier Intensive, Premier Plus, Premier Courses:** (see page 12)
2005: Jan 4/17/31; Feb 14/28; Mar 14/29; Apr 11/25; May 9/23; Jun 6/20/27; Jul 4/11/18/25; Aug 1/8/15/22; Sep 5/19; Oct 3/17/31; Nov 14/28 2006: Jan 3/16/30; Feb 13/27; Mar 13
- » **Cambridge Exam Preparation Course:** (12 week FCE and CAE course, see p.13)
2005: Mar 21 - Jun 10; Sep 19 - Dec 9
- » **IELTS Preparation Course:** (see page 13)
2005: Jan 4; Apr 4; Jun 6; Sep 5; Oct 24
(4 week IELTS course start dates: 2005: Jun 6; Jul 4; Aug 1)
- » **English for Business Course:** (see page 14) See Premier dates above
- » **Internship/Internship Plus:** (see page 14) See Premier dates above
- » **Academic Year:** (see page 16-19)
2005: Jan 4; Apr 18; Jun 20; Sep 26 2006: Jan 9; Apr 18
- » **Academic Semester:** (see page 16-19)
2005: Jan 4; Mar 14; Apr 18; Jun 20; Sep 26; Oct 24 2006: Jan 9; Mar 13; Apr 18
- » **Edinburgh Festival Course:** 2005: Aug 15; Aug 22

GENERAL TUITION FEES (£/WEEK)

Multiply your chosen course length by the weekly price for that duration.

Course (lessons/wk)	2-4 wks	5-11 wks	12-19 wks	20+ wks
Premier (20)	155	145	135	130
Premier Plus (24)	180	170	160	155
Premier Intensive (30)	200	190	180	175
Cambridge (20)	-	-	135	-
Cambridge Intensive (30)	-	-	180	-
IELTS (30)	200	190	180	-
English for Business (30)	200	190	180	175
Internship supplement (fixed rate)	4-7 wks 400	8-12 wks 500		
One to one tuition supplement	40 (per lesson)			
Edinburgh Festival course supplement	60 (per week)			

ACADEMIC YEAR/SEMESTER TUITION FEES (£)

	Plus (24 lessons)	Intensive (30 lessons)
Academic Year	3910	4360
Academic Semester	2700	3100

FEES INCLUDE

» 30, 24, or 20 lessons per week » Orientation meeting » Free information and welcome pack on arrival » Free use of Multimedia Computer Centre and Internet » Free University & College Placement Service (for students enrolled for 8 weeks or longer) » Aspect Certificate » Progress testing » Student identity card

ACCOMMODATION SERVICES (£/WEEK)

Type of Accommodation	Twin	Single
Homeshare (14 meals/wk)	82	102
Homestay (14 meals/wk)	90	110
Homestay Plus (14 meals/wk)	130	150
Apartment (No meals)	on request	on request
Residence (No meals, summer only)	on request	on request

DISCOUNTED ACCOMMODATION PACKAGE PRICES (£)

Type of Accommodation	Academic Year (inc. vacation)	Academic Semester (inc. vacation)
Homeshare twin (14 meals/wk)	2620	1572
Homeshare single (14 meals/wk)	3320	1992
Homestay twin (14 meals/wk)	2900	1740
Homestay single (14 meals/wk)	3600	2160
Homestay Plus twin (14 meals/wk)	4300	2580
Homestay Plus single (14 meals/wk)	5000	3000
Apartment twin (No meals)	5000	3025
Apartment single (No meals)	5575	3325

SUPPLEMENTS (£)

Enrolment fee	55
University & College Placement Service	350
Homestay 'Close to School'	20 (per week)
Homestay/share Christmas supplement	40 (per week)
Homestay/share Summer supplement (25 Jun '05 - 28 Aug '05)	20 (per week)
Edinburgh Airport transfer service	35 (one-way)

Note: Additional accommodation may be required when taking external exams. Please ask your Aspect representative for more information. Further supplements /deposits (courier, insurance, change, materials, housing) are listed on page 66.

ASPECT COLLEGE **DUBLIN**

Known affectionately by its residents as the 'Fair City', Dublin gives all its visitors a warm welcome. With an elegant city centre small enough to walk around, Dublin feels more like a village than a big city, despite a population of more than a million people. Recently ranked one of the world's 'most livable' cities, Dublin now also offers visitors a multitude of stylish bars, fashionable coffee shops and designer boutiques.





ASPECT COLLEGE DUBLIN

A short walk from Dublin Castle, in the fashionable Temple Bar district, you will find Aspect College Dublin located in a magnificent Georgian former presbytery, overlooking the River Liffey. Many of the surrounding streets are cobbled and pedestrianised - all the better to explore the fine range of museums, galleries, cafés and book shops to be found within minutes of our college.

The elegant college building houses a thoroughly modern interior with 12 bright classrooms, a newly-refitted computer centre with full multimedia facilities and an extensive software library. Our expert teaching staff carefully assess your abilities on arrival and provide first-class language instruction to students of all levels.

ACCOMMODATION OPTIONS

Your Aspect Accommodation Officer will make sure that you feel at home during your stay and will provide you with the following accommodation options:

- » Homestay twin/single (min. age 16): half-board
- » Homestay Plus twin/single (min. age 16): half-board
- » Residence Coolock single (min. age 18): self-catering with en suite bathrooms, fully-fitted kitchen/dining room and living room in a suburban location

ACTIVITIES AND EXCURSIONS

Dublin has a great deal to offer including theatres, art galleries and historic sights. Aspect's Activities Organiser will arrange a full programme of activities and excursions to give you a true sense of Dublin and Ireland, including:

- » Evening Ceilidhs at a traditional Irish pub
- » Irish dancing classes, horse-riding lessons and sports leagues
- » Outings to museums, art galleries and Irish cultural centres
- » Visits to Trinity College, the Guinness Storehouse and Jameson Distillery
- » Day trips to Glendalough and the Wicklow Mountains
- » Weekends away to beautiful Galway, Cork and Kilkenny

ASPECT COLLEGE DUBLIN

The Presbytery Building, 7 Exchange Street Lower, Temple Bar, Dublin 8

WHY ASPECT COLLEGE DUBLIN?

- » First-class location in Temple Bar, Dublin's most fashionable district
- » Aspect College Dublin offers modern facilities and a high academic standard
- » Varied activity programme including weekends away in Galway and Killarney
- » Dublin – combines big city excitement with a village-like friendliness and a fascinating literary history

COURSES AND START DATES

- » **Premier Intensive, Premier Plus, Premier Courses:** (see page 12)
2005: Jan 4/10/24; Feb 7/21; Mar 7/21; Apr 4/18; May 3/16/31; Jun 13/27; Jul 4/11/18/25; Aug 1/8/15/22/30; Sep 12/26; Oct 10/24; Nov 7/21; Dec 5
2006: Jan 3/9/23; Feb 6/20; Mar 6
- » **Beginner Start Dates:**
2005: Jan 10; Feb 21; Mar 21; Apr 18; May 16; Jun 13; Jul 11; Aug 15; Sep 12; Oct 10; Nov 7
2006: Jan 9; Feb 20; Mar 20
- » **Cambridge Exam Preparation Course:** (12 week FCE and CAE course, see p.13)
2005: Mar 21 - Jun 10; Sep 19 - Dec 9
- » **English for Business Course:** (see page 14) See Premier dates above
- » **Internship/Internship Plus:** (see page 14) See Premier dates above
- » **Academic Year:** (see page 16-19)
2005: Jan 4; Apr 18; Jun 20; Sep 26
2006: Jan 9; Apr 18
- » **Academic Semester:** (see page 16-19)
2005: Jan 4; Mar 14; Apr 18; Jun 20; Sep 26; Oct 24
2006: Jan 9; Mar 13; Apr 18

GENERAL TUITION FEES (€/WEEK)

Multiply your chosen course length by the weekly price for that duration.

Course (lessons/week)	2-4 wks	5-11 wks	12-19 wks	20+ wks
Premier (20)	200	190	180	175
Premier Plus (24)	230	220	210	200
Premier Intensive (30)	260	250	240	230
Cambridge (20)	-	-	180	-
Cambridge Intensive (30)	-	-	240	-
English for Business	260	250	240	230
Internship supplement (fixed rate)	4-7 wks 500	8-12 wks 600		
One to one tuition supplement	50 (per lesson)			

ACADEMIC YEAR/SEMESTER TUITION FEES (€)

	Plus (24 lessons)	Intensive (30 lessons)
Academic Year	4660	5310
Academic Semester	3650	4150

FEES INCLUDE

- » 30, 24, or 20 lessons per week » Orientation meeting » Free information and welcome pack on arrival » Free use of Multimedia Computer Centre and Internet » Free University & College Placement Service (for students enrolled for 8 weeks or longer) » Aspect Certificate » Progress testing » Student identity card

ACCOMMODATION SERVICES (€/WEEK)

Type of Accommodation	Twin	Single
Homestay (14 meals/wk)	125	150
Homestay Plus (14 meals/wk)	165	190
Residence Coolock (No meals)	-	170

DISCOUNTED ACCOMMODATION PACKAGE PRICES (€)

Type of Accommodation	Academic Year (inc. vacation)	Academic Semester (inc. vacation)
Homestay twin (14 meals/wk)	3950	2370
Homestay single (14 meals/wk)	4825	2855
Homestay Plus twin (14 meals/wk)	5350	3210
Homestay Plus single (14 meals/wk)	6225	3735
Residence Coolock single (No meals)	5750	3435

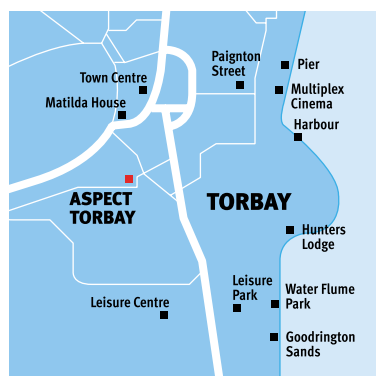
SUPPLEMENTS (€)

Enrolment fee	85
University & College Placement Service	450
Homestay 'Close to School'	30 (per week)
Homestay/share Christmas supplement	60 (per week)
Homestay/share Summer supplement (25 Jun '05 - 28 Aug '05)	30 (per week)
Dublin Airport transfer service	70 (one-way)

Note: Additional accommodation may be required when taking external exams. Please ask your Aspect representative for more information. Further supplements /deposits (courier, insurance, change, materials, housing) are listed on page 66.

« **1** Aspect College Dublin **2** Expand your knowledge of English with students from all over the world **3** Enjoy a stroll across Dublin's Ha'penny Bridge **4** Spend an afternoon in the peaceful surroundings of Trinity College **5** Soak up the atmosphere of a lively Dublin pub

ASPECT TORBAY



Torbay is a popular holiday area on the English Riviera, made up of three charming towns - Torquay, Paignton and Brixham. Our partner school is located in Paignton, a friendly, attractive seaside resort with a sandy beach, which provides an excellent environment in which to study English. Torquay offers a lively nightlife and Brixham abounds in traditional, maritime charm. The Torbay area is also conveniently situated just an hour from Cornwall and the stunning Dartmoor National Park.

ASPECT TORBAY

At our partner school, students can enjoy first-rate facilities including a self-study centre with free Internet access and a small book shop. It also provides students with a number of areas in which to relax, including a student lounge, a snack bar and a garden. The school is just 5 minutes from the town centre, where a wide range of banks, shops, restaurants, cinemas and pubs can be found.

ACCOMMODATION OPTIONS

Our partner school can offer you the following types of accommodation:

- » Homestay twin/single (min. age 17): half-board and located close to the school
- » Residence single (min. age 17): self catering. Matilda House is a recently refurbished residence 5 minutes from the school. Hunters Lodge has also undergone a transformation and offers fantastic facilities which include a sauna, gym and student lounge and sea views.
- » Hotels (min. age 18): A range of reasonably-priced hotels are also available on request.

ACTIVITIES AND EXCURSIONS

The school arranges a wide variety of fun and exciting activities including:

- » Afternoon sightseeing and shopping in Exeter, Devon's largest town
- » Popular country pub tours with live music
- » Excursion to North Cornwall fishing villages, home of legendary King Arthur
- » Trip to Dartmoor including stops at Buckfast Abbey and infamous Dartmoor Prison

ASPECT TORBAY Conway Road, Paignton, Devon TQ4 5LH, UK

1 Study English in this charming seaside town **2** Experience the outdoor life in Britain's sunniest region

COURSES AND START DATES

The minimum age for this school is 17, minimum course length is 2 weeks.

» **General English (20 lessons/wk), Intensive Main courses (30 lessons/wk):** Courses start every Monday, all levels. Max. 12 students per class.

» **General English Plus (30 lessons/wk, includes 10 lessons one to one):** Courses start every Monday, all levels

» **Business English (30 lessons/wk, includes 10 lessons in small groups of 5):** Courses start every Monday, intermediate level required

» **Cambridge Exam Preparation Course (30 lessons/wk, max 12 students per class)**

8 week courses: **2005:** Jan 17, Apr 25 (FCE, CAE and CPE)

13 week courses: **2005:** Mar 21, Sep 19 (FCE, CAE and CPE)

» **Academic Year (32 weeks) Academic Semester (20 weeks):** **2005:** Jan 3; Apr 18; Sep 26

» **Teenager courses (20 lessons/wk):** Available from Mar 20 to Oct 26, ages 13 - 18 incl. Contact your Aspect representative for more details.

GENERAL TUITION FEES (£/WEEK)

Multiply your chosen course length by the weekly price for that duration.

Course (lessons/wk)	2-3 wks	4-7 wks	8-11 wks	12+ wks
General English (20)	150	140	130	125
Intensive Main (30)	195	185	175	170
General English Plus (30)	290	285	275	270
English for Business	220	215	-	-
Cambridge Intensive (30)	-	-	140	135
One to one tuition supplement (min. 10 lessons/wk)	25 (per lesson)			
High Season supplement from Jun 25 - Aug 28	28 (per week)			

ACADEMIC YEAR/SEMESTER TUITION FEES (£)

	24 lessons/wk
Academic Year	3800
Academic Semester	2700

FEES INCLUDE

» 30, 24 or 20 lessons per week » Orientation meeting » Free information and welcome pack on arrival » Free use of Multimedia Computer Centre and Internet » Course Certificate » Progress testing

ACCOMMODATION SERVICES (£/WEEK)

Type of Accommodation	Twin	Single
Homestay (14 meals/wk)	98	119
Matilda House (no meals)	-	91
Hunters Lodge (no meals)	-	105

ACCOMMODATION PACKAGE PRICES (£)

Type of Accommodation	Academic Year (32 weeks)	Academic Semester (20 weeks)
Homestay twin (14 meals/wk)	2800	1760
Homestay single (14 meals/wk)	3450	2180
Matilda House single (no meals)	2700	1720
Hunters Lodge single (no meals)	3100	2000

SUPPLEMENTS (£)

Enrolment fee	55
London Heathrow Airport transfer (bus), one way	27
London Gatwick Airport transfer (bus), one way	40
Bristol Airport transfer (shuttle), one way	35

* Arrival: Sunday Departure: Saturday or Sunday